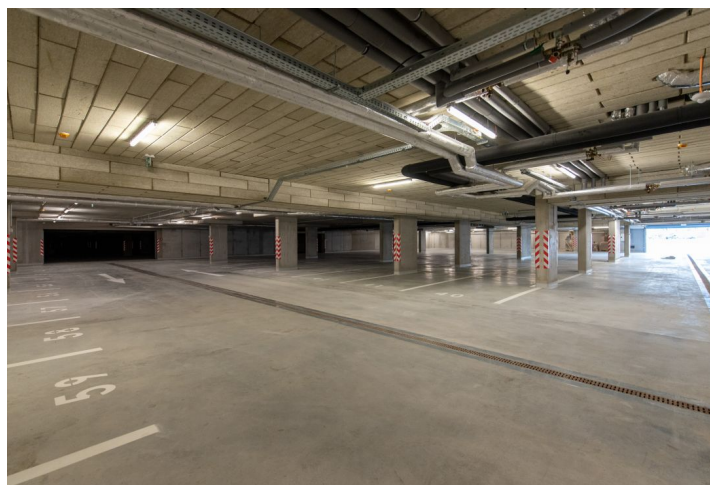
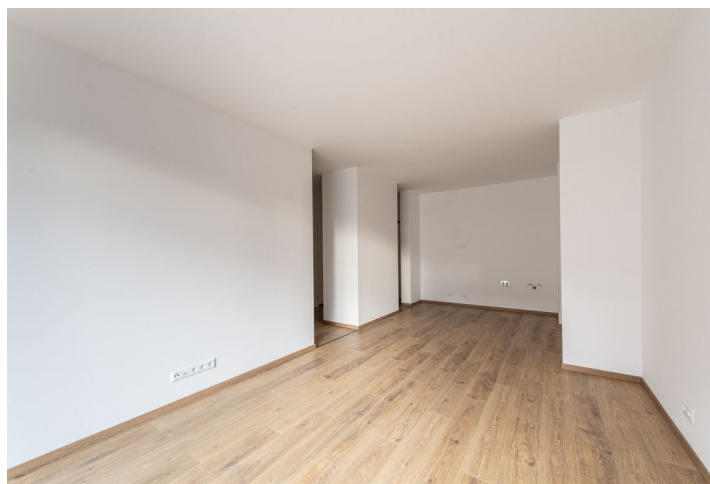
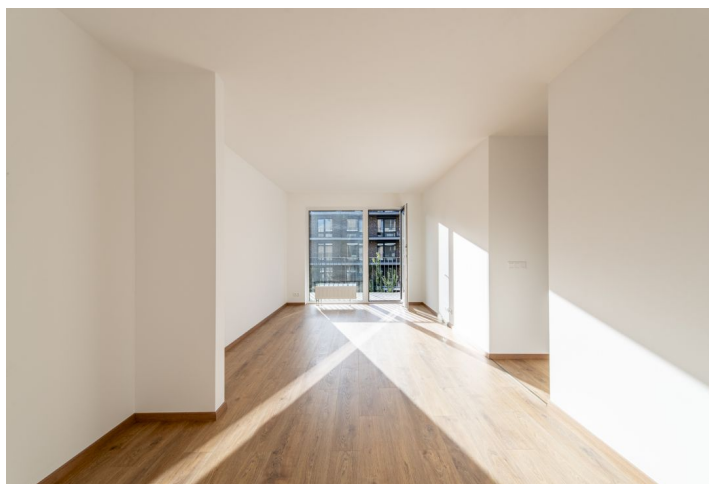




## Apartment One-bedroom (2+kk)

€ 240 131 | CZK 6 074 114

56 m<sup>2</sup>, Bratislava V, Petržalka, Fialová





## Apartment One-bedroom (2+kk)

€ 240 131 | CZK 6 074 114

56 m<sup>2</sup>, Bratislava V, Petržalka, Fialová

Total area	63 m <sup>2</sup>
Floor area*	56 m <sup>2</sup>
Balcony	7 m <sup>2</sup>
Parking	20 000 EUR
Garage	Yes
Cellar	-
PENB	G
Reference number	100431

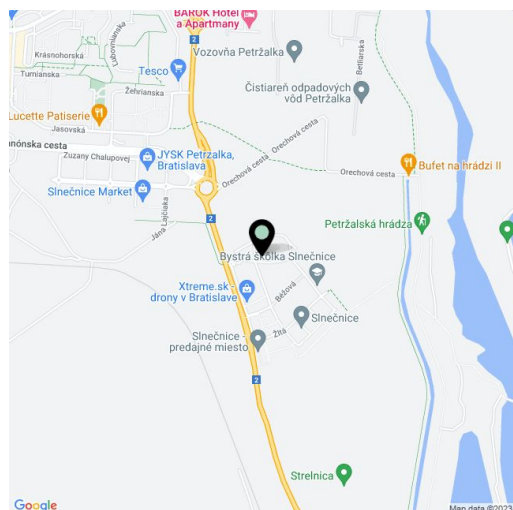
This sunny 1-bedroom apartment in a new building with a west-facing balcony offers relaxed living with many parks in the popular new neighborhood of Slnecnice - Viladomy. The apartment is suitable for families with children.

All of the one-bedroom apartment have functional layouts, which consist of an entrance hall with space for a wardrobe, a bathroom with a toilet and shower, a kitchen with space for a dining area, and a living room with a passage to the bedroom with **space for a wardrobe**. The bedroom has access to a **west-facing balcony**. It is possible to buy a **parking space in the underground garage** for EUR 20,000/space.

Facilities consist of laminate floors, triple-glazed plastic windows, a preparation for exterior blinds, entrance fire safety doors, interior doors, **central heating**, a heated towel rail in the bathroom, a **preparation for air-conditioning**, an intercom, and a preparation for a video doorman.

The recently completed building is in a rapidly developing new district of **Slnecnice**, which has quickly become popular among those interested in new housing due to its quiet location and proximity to nature. A children's playground is part of the complex, and there are nearby **sports opportunities** on the embankment and a sports center. Besides the **quality of the urban architecture**, the excellent civic amenities, **private kindergarten** on the ground floor of the building, and good accessibility by public transport and car make it a great place to live.

Interior 56 m<sup>2</sup>, balcony 7 m<sup>2</sup>



\* Size of the unit according to the Housing Act.  
The area consists of the sum total of the internal area of every room.