



Land

661 m², Praha-západ, Horoměřice, K Menhiru

Sold



661 m², Praha-západ, Horoměřice, K Menhiru

Price per sq. m.	13 616 CZK
Total area	661 m ²
Land type	Housing
Reference number	100775

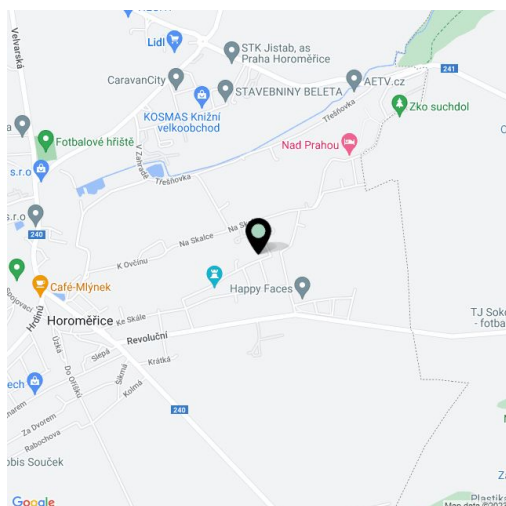
This flat corner plot of land with a valid permit for the construction of a family house is located in a quiet, green place between the municipality of Horoměřice and the Prague 6 Suchdol and Lysolaje districts, not far from international schools and the airport.

Utility networks (water, gas, electricity, and sewage) are connected to the plot of land with a total area of 661 sq. m.; the entrance leads to a new lit road made of interlocking paving. The offer includes a **project** with documentation for a **building permit**, which is valid until December 2024.

The 4-bedroom house project includes a living room and a dining room on the ground floor, connected by a **south-facing terrace**. The social area on the ground floor is complemented by a kitchen, dressing room, toilet, and utility room. The first floor is planned as a private zone; the parental part will consist of a bedroom, a dressing room, a bathroom with an **infrared sauna** and a relaxation corner. There are also 2 children's rooms with dressing rooms, a guest room/study, and a central bathroom. Parking is provided by a **covered carport for 2 cars**.

The land is part of a currently emerging residential district in a village with a good infrastructure. Nearby is a kindergarten and elementary school, shops including a supermarket, **a sports complex**, and a children's playground. The CZU campus is within easy reach, and the **Riverside School Prague** and **the International School of Prague** are also within a short driving distance. The drive to the airport is quick. Transport connections are provided by buses, and the ride to the Dejvická metro station takes 15 minutes; serviceability will improve even more after the extension of the tram line to Suchdol. The area is surrounded by beautiful nature with many **natural monuments**.

Total area 661 m².

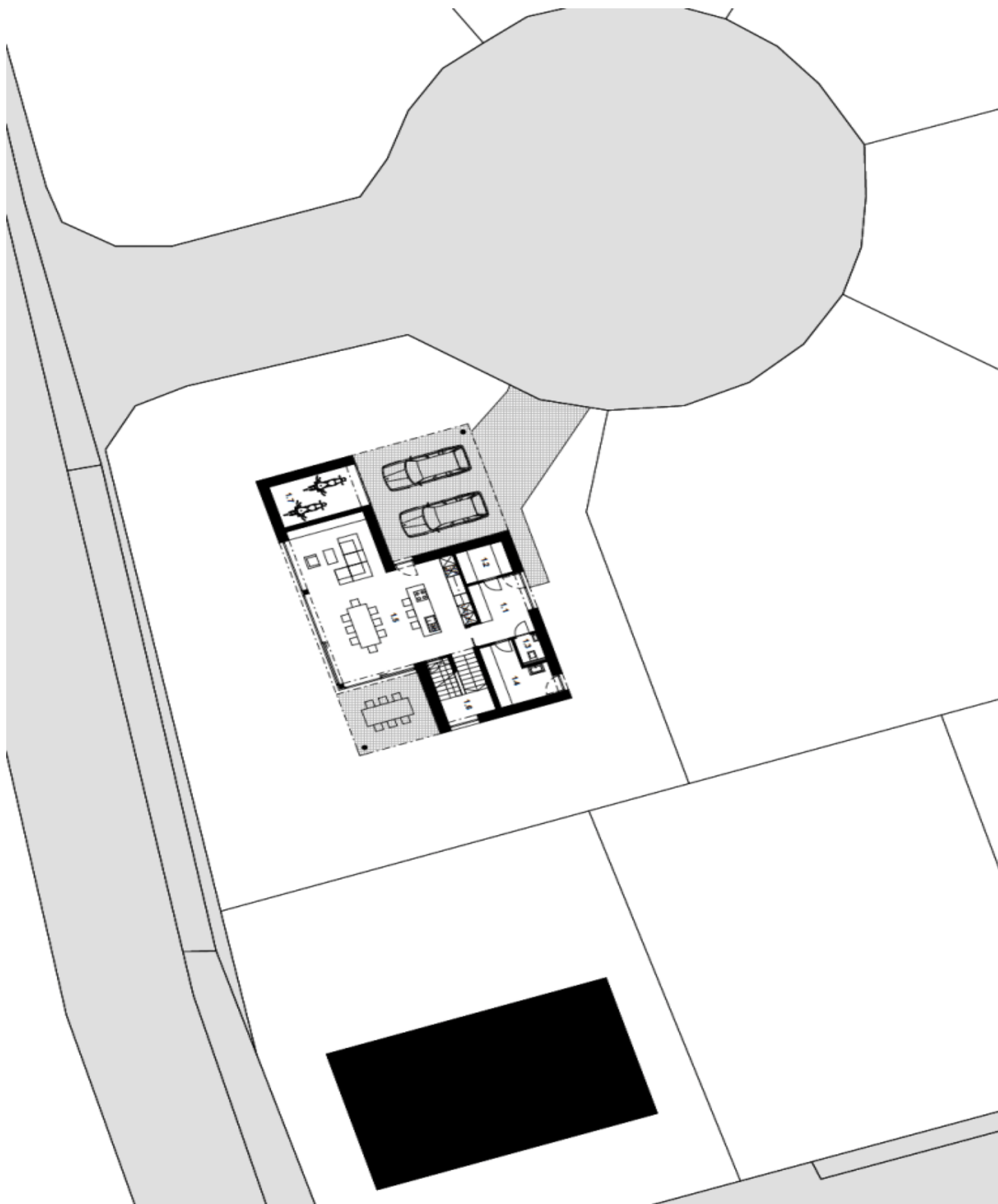




Land

661 m², Praha-západ, Horoměřice, K Menhiru

Sold

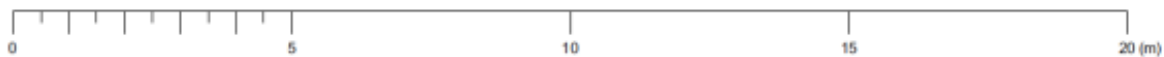
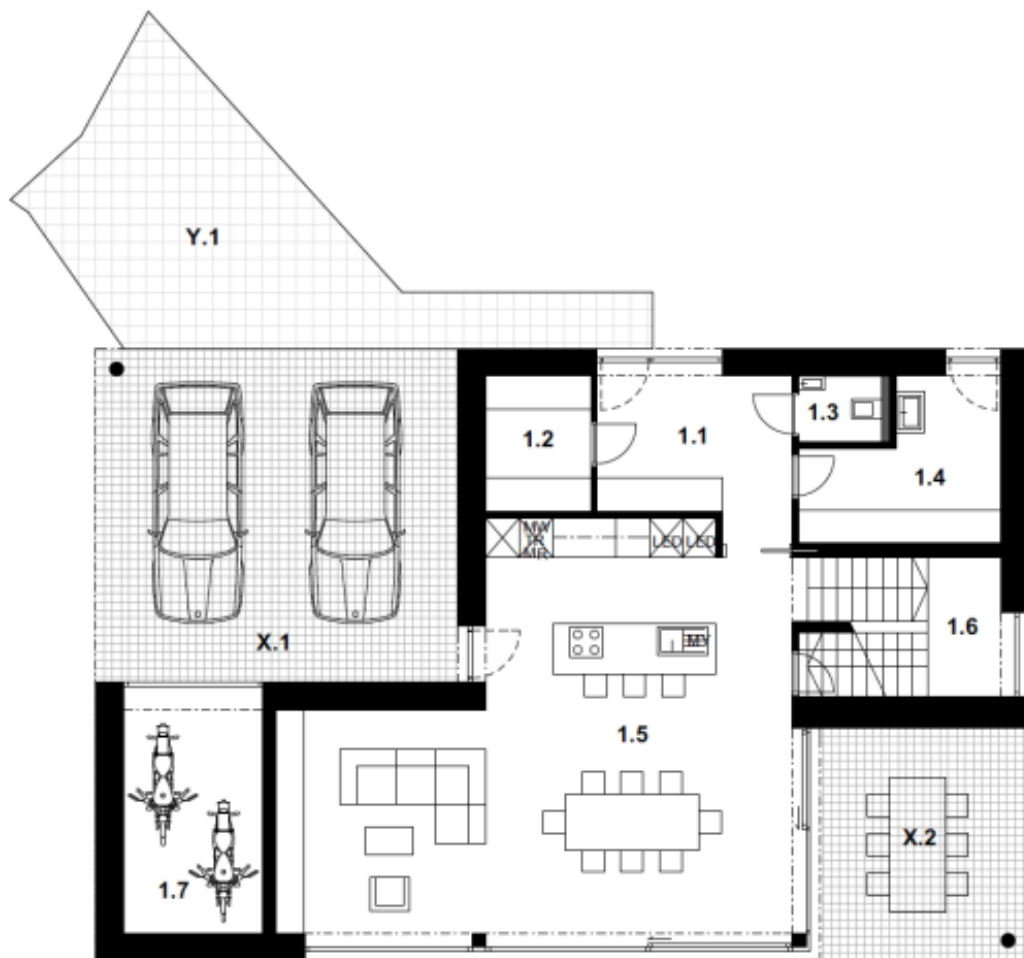




Land

661 m², Praha-západ, Horoměřice, K Menhiru

Sold

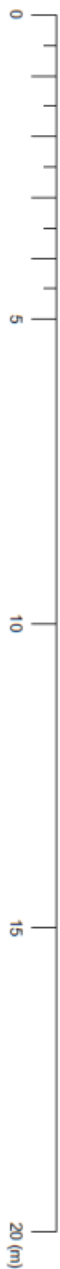




Land

661 m², Praha-západ, Horoměřice, K Menhiru

Sold

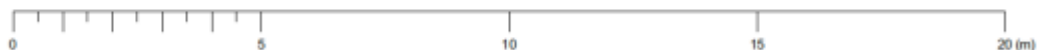
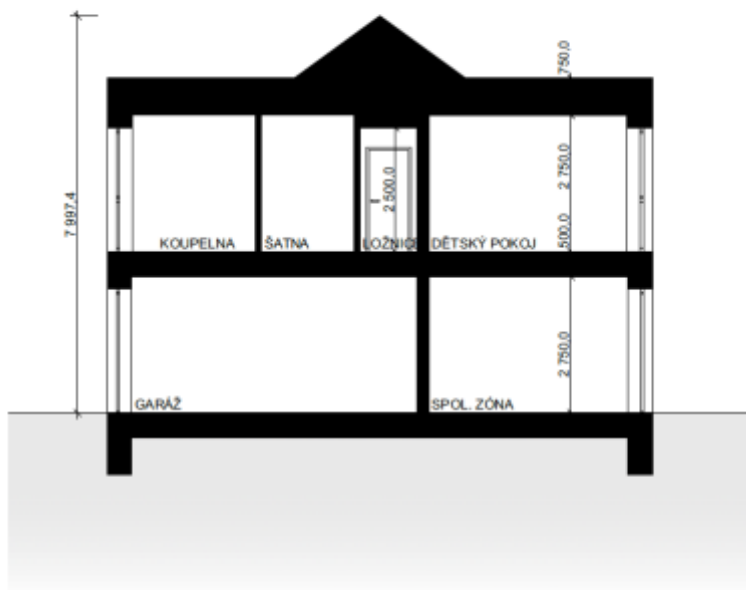
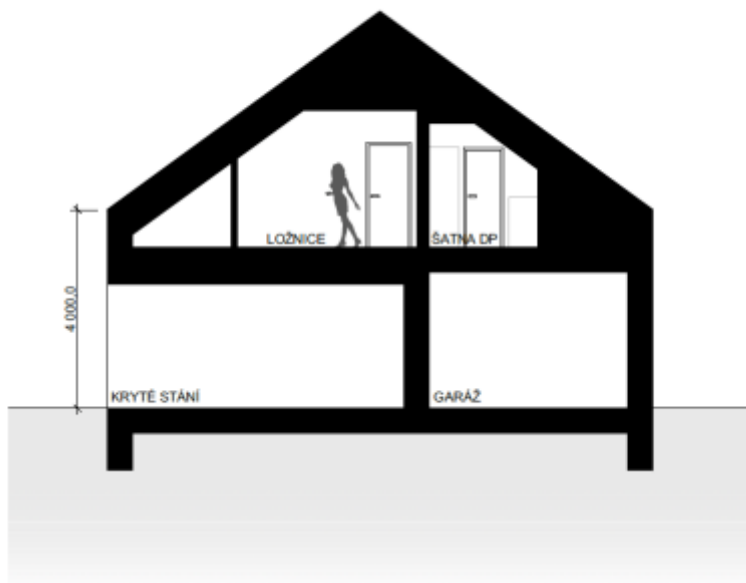
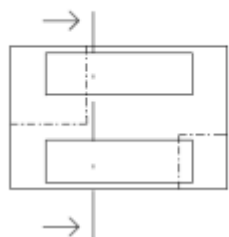
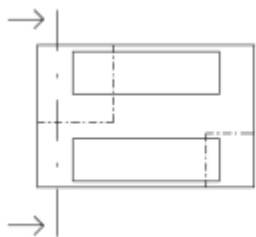




Land

661 m², Praha-západ, Horoměřice, K Menhiru

Sold





Land

661 m², Praha-západ, Horoměřice, K Menhiru

Sold

