



Apartment Four-bedroom (5+kk)

Rented

222 m², Prague 7, Bubeneč, Čechova





Apartment Four-bedroom (5+kk)

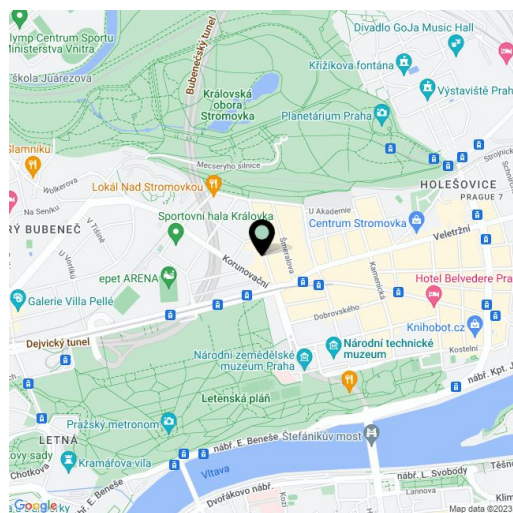
Rented222 m², Prague 7, Bubeneč, Čechova

Total area	250 m ²
Floor area*	222 m ²
Terrace	28 m ²
Parking	Possible to arrange garage parking nearby.
Cellar	Yes
PENB	G
Reference number	10116
Available from	Immediately

High end Prague apartment for rent. Top quality 5th floor 4-bedroom 2,5-bathroom flat with a 28 m² terrace with jacuzzi, in a beautifully renovated 1914 building with lift and marble entrance area. Located on a beautiful tree lined street virtually steps from Stromovka Park, the largest park in Prague, a 15 minute walk to the center through another popular Prague park - Letná.

The lower level boasts a spacious living room with a fireplace and atelier windows, fully fitted open plan kitchen, master bedroom with a full en-suite bathroom and a walk-in closet, second bedroom, toilet with sink, laundry room, and an entry hall with built-in storage. The upper floor includes a large gallery with access to the terrace with jacuzzi, two bedrooms both with terrace access, one with a walk-in closet, and bathroom with bath tub, shower, toilet and sink.

Full air-conditioning, heated tiles in bathrooms, security door, central heating plus an additional own boiler, automatic blinds, washer, dryer, Siemens appliances, American style fridge, Villeroy&Boch bathroom fixtures, rainbow shower head, alarm, video entry phone, UPC cable for satellite and the Internet. Cellar of 13 m². Easy parking on the street. Tram connections, convenient to Hradčanská (line A) and Vltavská (line C) metro stations. Common building charges are CZK 6.000 per month. Electricity bills will be transferred to the tenant. Available from September 2020.



* Area of the unit according to the Civil Code. The area consists of the sum total area of the entire unit bounded by perimeter walls.



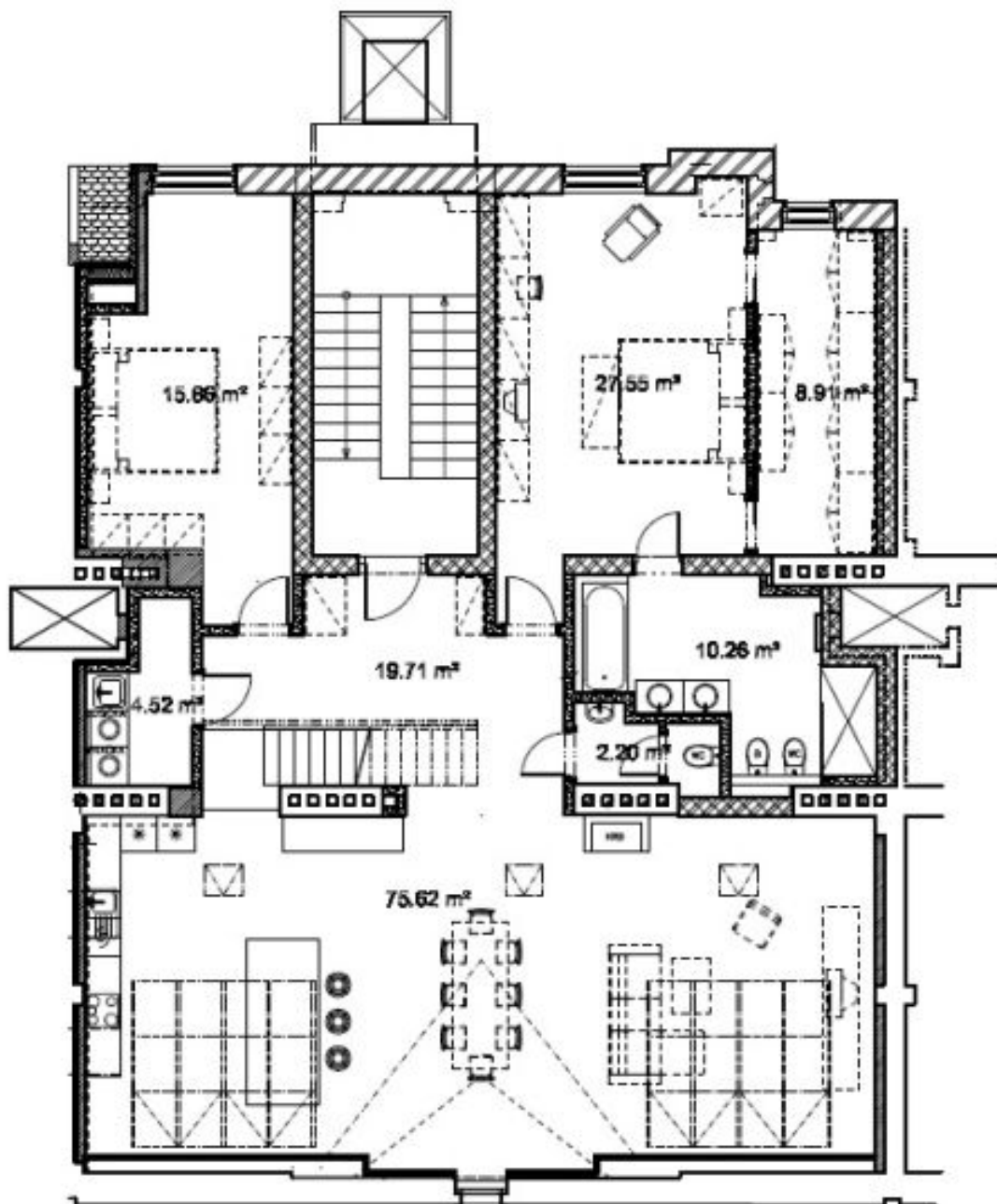
Apartment Four-bedroom (5+kk)

Rented

222 m², Prague 7, Bubeneč, Čechova

Čechova

6.NP





Apartment Four-bedroom (5+kk)

Rented

222 m², Prague 7, Bubeneč, Čechova

Čechova

7.NP

