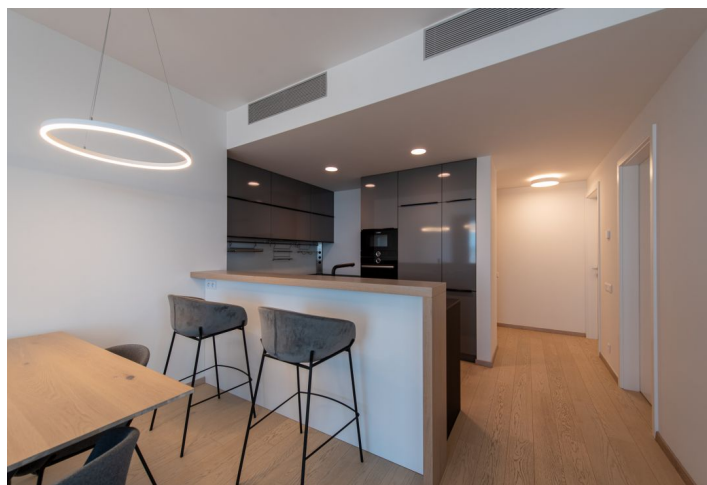




Apartment Two-bedroom (3+kk)

€ 1700 | CZK 42 704

90 m², Bratislava I, Old Town, Továrenská





Apartment Two-bedroom (3+kk)

€ 1 700 | CZK 42 704

90 m², Bratislava I, Old Town, Továrenská

| | |
|------------------|-------------------|
| Total area | 98 m ² |
| Floor area* | 90 m ² |
| Loggia | 8 m ² |
| Parking | Yes |
| Garage | Yes |
| Cellar | Yes |
| Service price | 400 EUR utilities |
| PENB | A |
| Reference number | 101703 |
| Available from | Immediately |

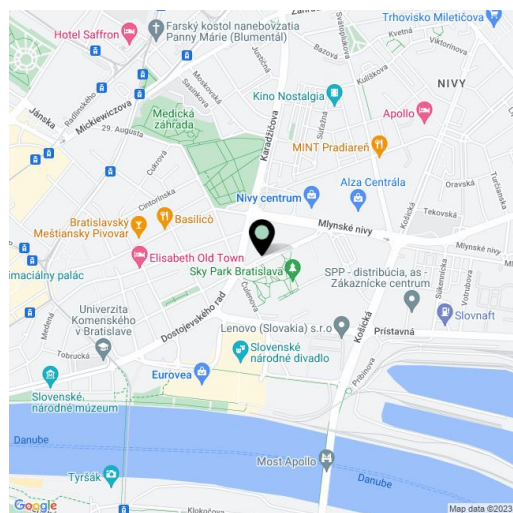
In the unique Sky Park by ZAHA HADID project, this 2-bedroom apartment with a loggia on the 21st floor with direct views of Bratislava Castle offers comfortable living in the immediate vicinity of the OC Nivy and Eurovea malls and the Danube embankment. The location provides quick access to public transport, including a new bus station.

The layout of the apartment consists of an entrance hall with a built-in wardrobe, a bathroom with a walk-in shower, bathtub, and toilet, a living room with quality furniture, a fully equipped kitchen including a dishwasher and **BOSCH** appliances, a bedroom with a **built-in wardrobe**, and a second bedroom with access to the **loggia**. Access to the loggia with panoramic views is also possible from the living room.

High standard facilities include wooden parquet floors, gres tiles, aluminum windows, **ceiling air-conditioning**, and garbage disposal. There is a 24/7 reception available to residents and the apartment comes with a cellar and a garage parking space.

Interior 90 m², loggia 8 m²

Rent EUR 1,700 + EUR 500 advance payment for utilities and energy



* Size of the unit according to the Housing Act.
The area consists of the sum total of the internal area of every room.