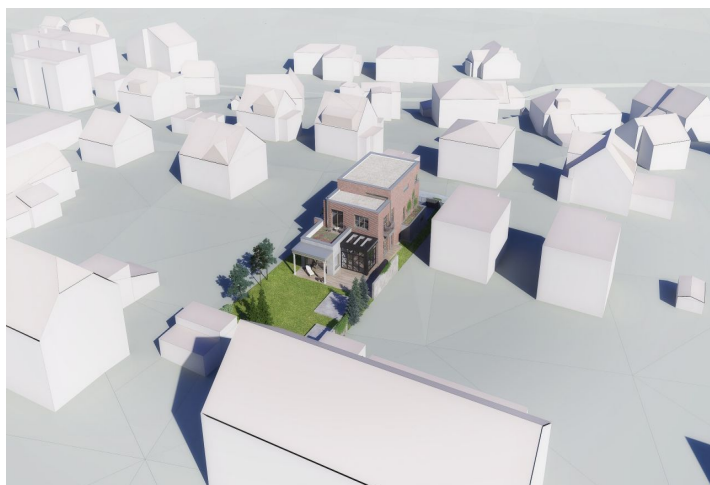




Land

790 m<sup>2</sup>, Praha 6, Nebušice, Pod Starou školou

Sold





## Land

Sold

790 m<sup>2</sup>, Praha 6, Nebušice, Pod Starou školou

Price per sq. m.	22 152 CZK
Total area	790 m <sup>2</sup>
Land type	Housing
Reference number	101722

**This south-facing plot of land with a total area of 790 sq. m is located in a traditional residential area in the prestigious part of Prague 6 - Nebušice with a valid building permit for a two-story family house with a garage, winter garden, outdoor pool, and usable area of 285 sq. m. The place is surrounded by forests, away from the hustle and bustle of the city, yet also within easy reach of it. The airport is also perfectly accessible.**

The maximum buildable area according to the spatial plan is approx. **30%** (in accordance with the surrounding development). There is a **connection to sewerage and water**, and electricity runs in the grass strip between the plot and the road. According to **the building permit issued on February 20, 2023**, a family house with a south-facing garden terrace, garage, and outdoor parking spaces can be built here. On the ground floor, a living room, kitchen, dining room, conservatory, study with a loggia, laundry room, toilet, entrance hall, corridor, and staircase hall with a landing platform are planned. Upstairs are 3 bedrooms, 3 bathrooms, a sauna, and a terrace. Photovoltaic panels and air-conditioning, wood-aluminum windows, and a brick facade are planned.

The land is part of a residential area near the **center of Nebušice**. In the vicinity, there is a state elementary school and the International School of Prague is also within walking distance (or 2 minutes by car). Within walking distance, there is a supermarket, a post office, an art school, and several restaurants. From the nearby bus stop, there are connections to the Bořislavka metro station, and the ride takes only 6 minutes. The place has very convenient access to the airport, as well as to the D7, D6, and D5 highways, and the City Ring Road. Not far from the future house is the entrance to **Hlásek Forest**, which is part of the **Šárka-Lysolaje nature park**.

Total area 790 m<sup>2</sup>.

