



Apartment One-bedroom (2+kk)

Sold

73.8 m², Prague 3, Vinohrady, Řípská





Apartment One-bedroom (2+kk)

Sold73.8 m², Prague 3, Vinohrady, Řípská

Total area	80 m ²
Floor area*	74 m ²
Terrace	6 m ²
Parking	-
Cellar	-
PENB	E
Reference number	101926

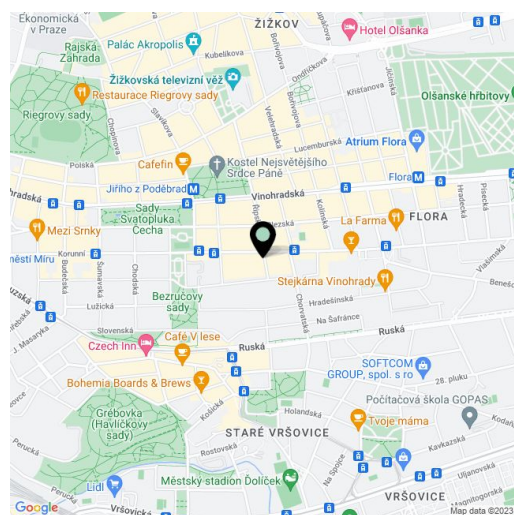
This bright duplex apartment with an air-conditioned bedroom and a terrace facing the courtyard is located in a renovated historic apartment building with an elevator. An attractive place on a side street a few steps from Jiřího z Poděbrad Square, 5 minutes by public transport from the city center.

On the entrance level (4th floor of the building) is a bright living space with a kitchen and dining area, a bathroom (bathtub, toilet, and bidet), a storage room under the stairs, and a vestibule. In the attic is a bedroom with a bathroom (shower, toilet, bidet), a utility room with a connection for a washing machine, and **an east-facing terrace overlooking the courtyard.**

Facilities include refurbished **wooden parquet floors**, a large **studio window** in the living room, **air-conditioning** in the attic bedroom, and a gas boiler. The building is well maintained and has an **elevator**.

The corner building with an **ornate facade** stands on a side street in **Vinohrady** in the wider center of Prague. The place has a complete infrastructure. Cafes, restaurants, and shops operate in the immediate vicinity. A short distance away is a metro station and the Jiřího z Poděbrad tram stop, and the **Flora** shopping and entertainment center is also within walking distance. The elegant district is very pleasant thanks to the nearby **Svatopluk Čech and Bratři Čapků parks**, and you can also walk to the **Havlíčkovy or Riegrovy Sady parks**.

Floor area 73.8 m², terrace 6.1 m².



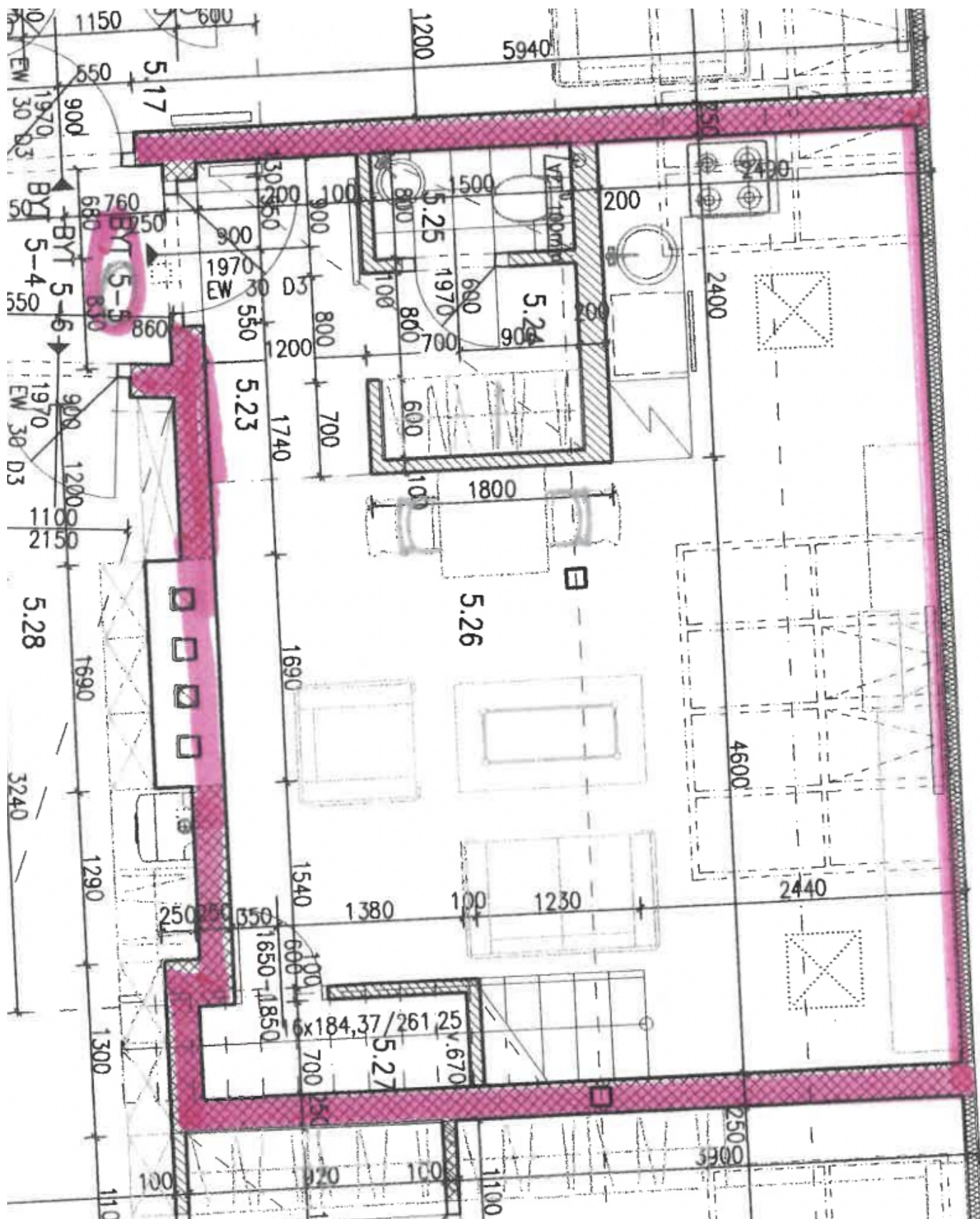
* Area of the unit according to the Civil Code. The area consists of the sum total area of the entire unit bounded by perimeter walls.



Apartment One-bedroom (2+kk)

Sold

73.8 m², Prague 3, Vinohrady, Řípská





Apartment One-bedroom (2+kk)

Sold

73.8 m², Prague 3, Vinohrady, Řipská

