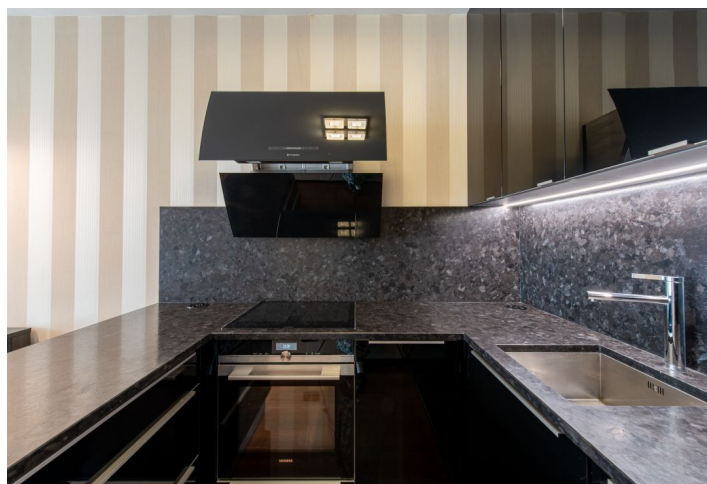
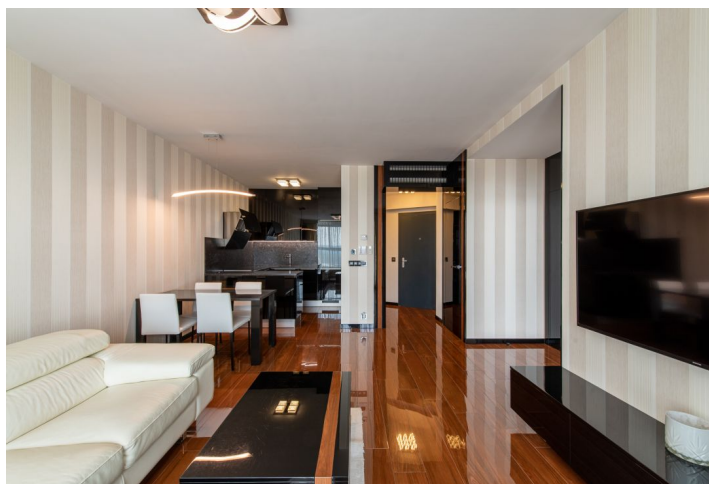
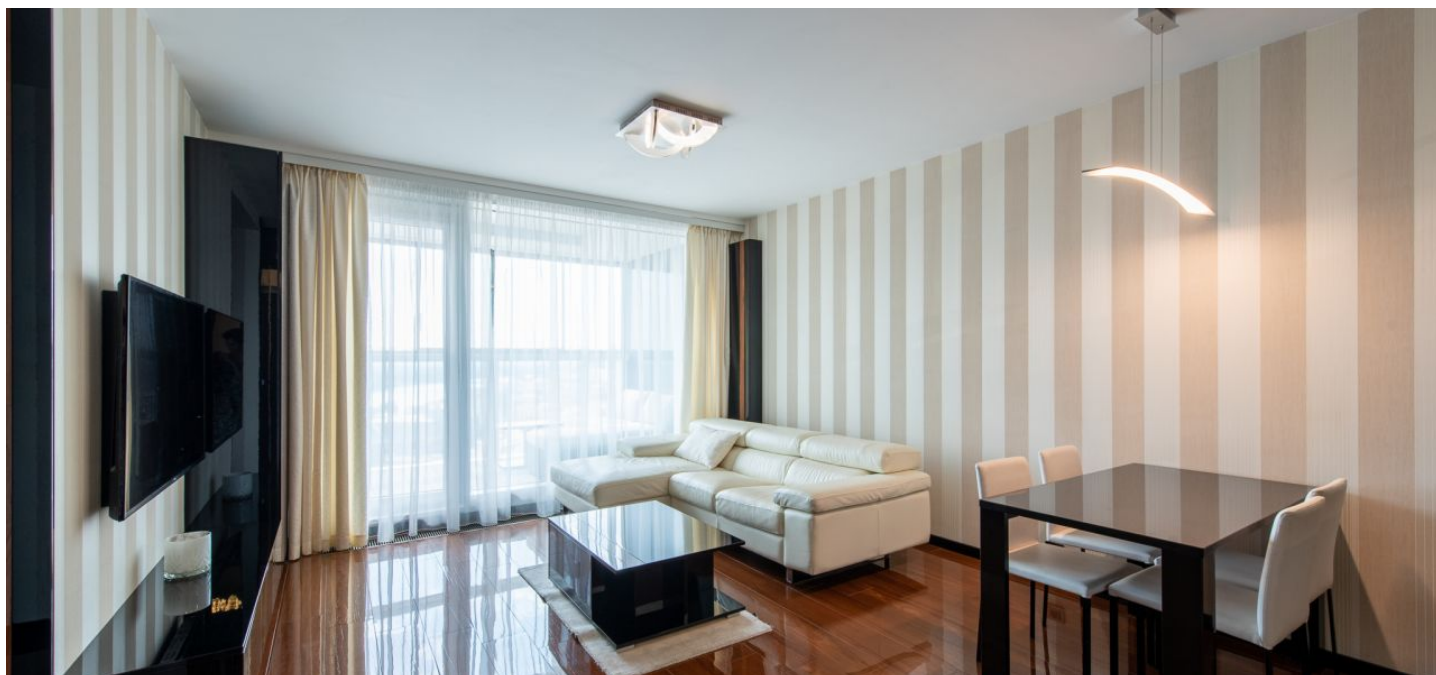




Apartment One-bedroom (2+kk)

Rented

58 m², Bratislava I, Bratislava, Landererova





Apartment One-bedroom (2+kk)

Rented58 m², Bratislava I, Bratislava, Landererova

Total area	66 m ²
Floor area*	58 m ²
Loggia	8 m ²
Parking	Yes
Garage	Yes
Cellar	-
Service price	.
PENB	G
Reference number	101962
Available from	Immediately

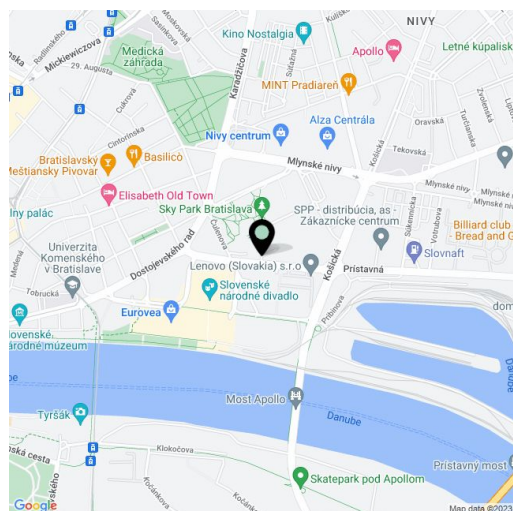
This luxury, air-conditioned 1-bedroom apartment for rent with beautiful views of Bratislava Castle and the nearby Austrian border is situated on the 26th floor of the new Panorama Towers building on Landererova Street in Old Town. A pleasant location with a full range of services in the immediate vicinity, in close proximity to the new modern Eurova City district, a full social event calendar, many businesses, new parks, squares, sports grounds, right by the Danube River.

The apartment consists of a separable entrance hall with a built-in wardrobe, a living room with a kitchen, dining room, and access to the loggia with outdoor seating, a bedroom with a built-in wardrobe and built-in **Samsung smart TV**, and a bathroom with a bathtub and toilet.

Facilities include **aluminum windows**, **private heating control**, **wooden floors** with a high gloss finish, medium pile carpet in the bedroom, **air-conditioning**, a Samsung smart TV in the living room, a leather sofa, stone kitchen worktops, and high-quality **Siemens kitchen appliances** including a dishwasher and wine fridge. The bathroom is equipped with **Villeroy & Boch** sanitary ware, **Grohe** faucets, and a built-in Siemens washing machine. **Wi-Fi Internet** is also included in the price.

A 24/7 guarded reception and party room are available to residents of the apartment building. There is a restaurant, several cafes, a car wash, and a Yeme premium grocery right on the premises.

Monthly rent EUR 1,100 + EUR 300 deposit for utilities + EUR 150 parking space in the garage



* Area of the unit according to the Civil Code. The area consists of the sum total area of the entire unit bounded by perimeter walls.