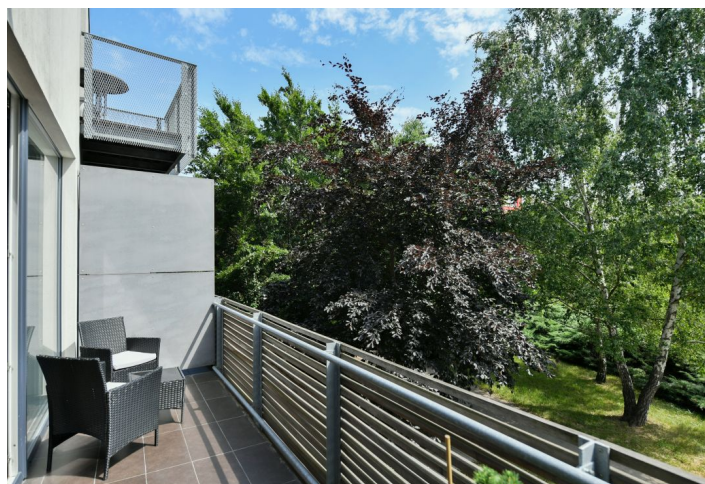
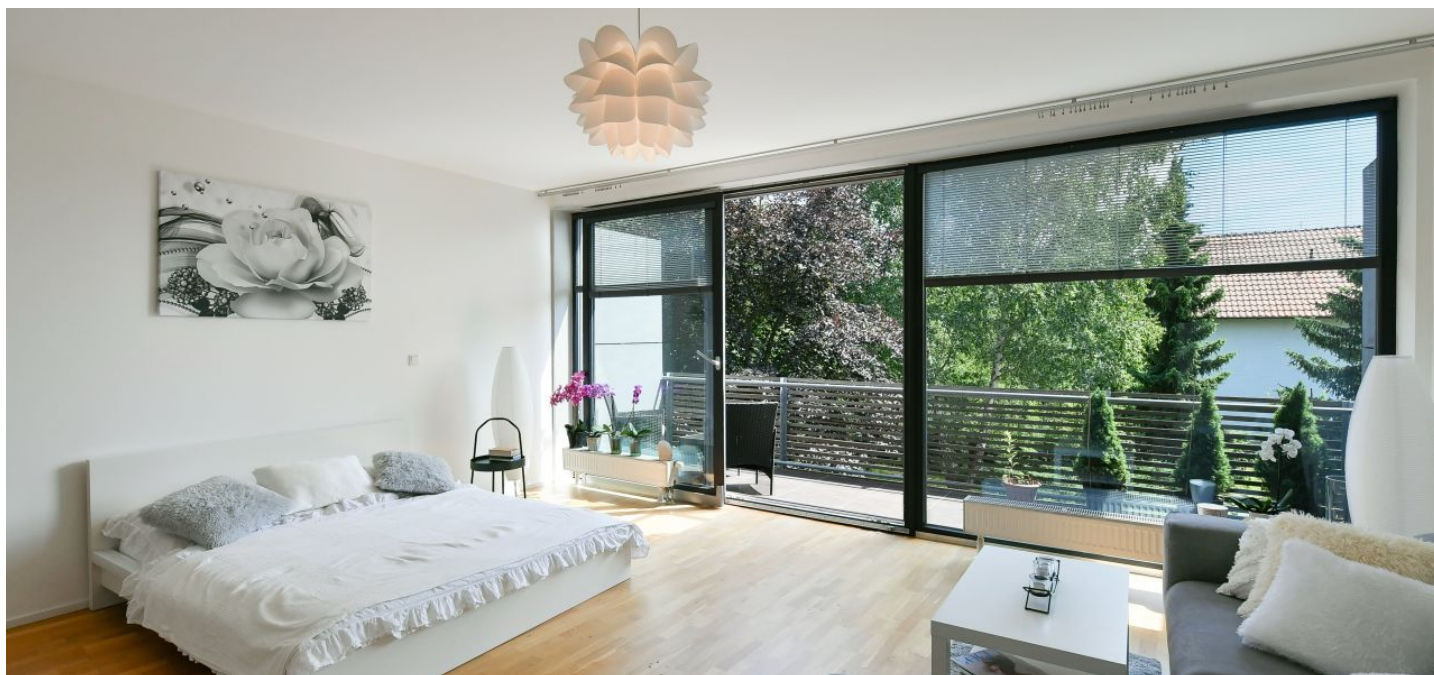




Apartment Studio (1+kk)

€ 279 265 | CZK 6 990 000

49 m², Prague 10, Hostivař, Pod Průsekem





Apartment Studio (1+kk)

49 m², Prague 10, Hostivař, Pod Průsekem

€ 279 265 | CZK 6 990 000

Total area	59 m ²
Floor area*	49 m ²
Balcony	10 m ²
Parking	Garage parking space
Garage	Yes
Cellar	Yes
PENB	G
Reference number	102160

This bright and airy, east-facing one-room apartment with a spacious balcony and breathtaking views of the greenery is part of a modern residential complex on the border of Hostivař and Strašnice. A garage parking space and cellar are included in the price.

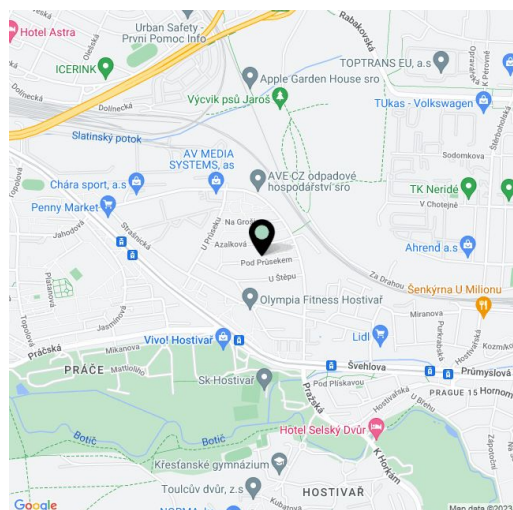
The clever layout of the apartment on the 1st floor consists of a large living space with a partially separate kitchen, a bathroom (with a bathtub, toilet, and connection for a washing machine and dryer), and an entrance hall. The living room and adjacent balcony have very nice views of mature trees and manicured bushes.

The boutique residence was completed in 2011; the building has an elevator. Facilities include large-format aluminum windows, wooden floors, and tiles in the bathroom. The apartment has a new kitchen and a built-in wardrobe in the hall. The unit includes a garage and a cellar.

The neighborhood provides complete civic amenities (shopping and entertainment center, sports field, medical facilities, many restaurants, etc.), and not far from the residence is the Hostivař-Záběhlice nature park with bike paths, hiking trails, and a popular recreation area around a dam.

Transport connections to the center are provided by trams and trains, and by bus or tram you can reach the Skalka metro station in a short time. By car you can immediately drive to the South Connecting Road.

Floor area 49 m², balcony 9.5 m².



* Size of the unit according to the Housing Act.

The area consists of the sum total of the internal area of every room.