



Apartment Three-bedroom (4+kk)

Rented

137 m², Bratislava I, Staré Mesto, Tichá





Apartment Three-bedroom (4+kk)

Rented137 m², Bratislava I, Staré Mesto, Tichá

Total area	186 m ²
Floor area*	137 m ²
Terrace	45 m ²
Parking	2 garage spaces included
Garage	Yes
Cellar	4 m ²
Service price	300 EUR utilities
PENB	G
Reference number	102485
Available from	02.09.2024

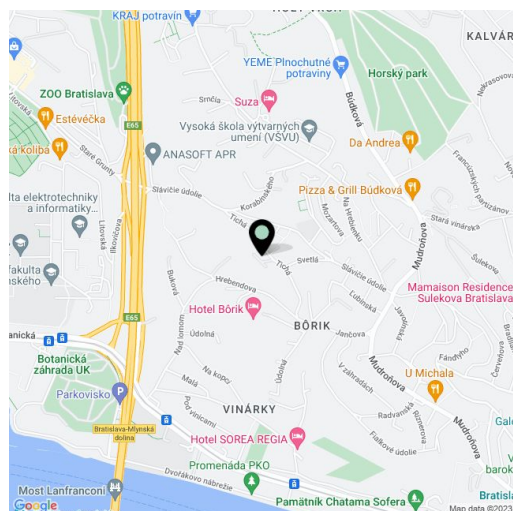
We offer for rent an air-conditioned 3-bedroom duplex duplex with three terraces, situated on the 4th and 5th floor of the building in a quiet part of the Mountain Park. The location of the Old Town allows quick connection to the motorway bypass as well as comprehensive services right in the centre of Bratislava.

The first floor of the apartment consists of a spacious entrance hall, guest toilet, storage room and a generous 45 m² living room with kitchen including dining area. From the living room there is an exit to the terrace. The first floor of the apartment consists of an entrance hall and two bedrooms. The third room has a large wardrobe and an airy bathroom with a bath, shower, two sinks and laundry. From all three rooms there is access to two large terraces overlooking the quiet area.

Standard features of the apartment include security doors, laminate flooring, plastic windows, air conditioning, granite kitchen worktops, Versace bathroom tiles, new washing machine, tumble dryer as well as a gas boiler for hot water and heating. There is fiber optic internet and a video doorman.

Interior 137 m², terraces 45 m²

Monthly rent 1 500 EUR + 300 EUR deposit for utilities and services. The price includes two garage spaces.



* Size of the unit according to the Housing Act. The area consists of the sum total of the internal area of every room.



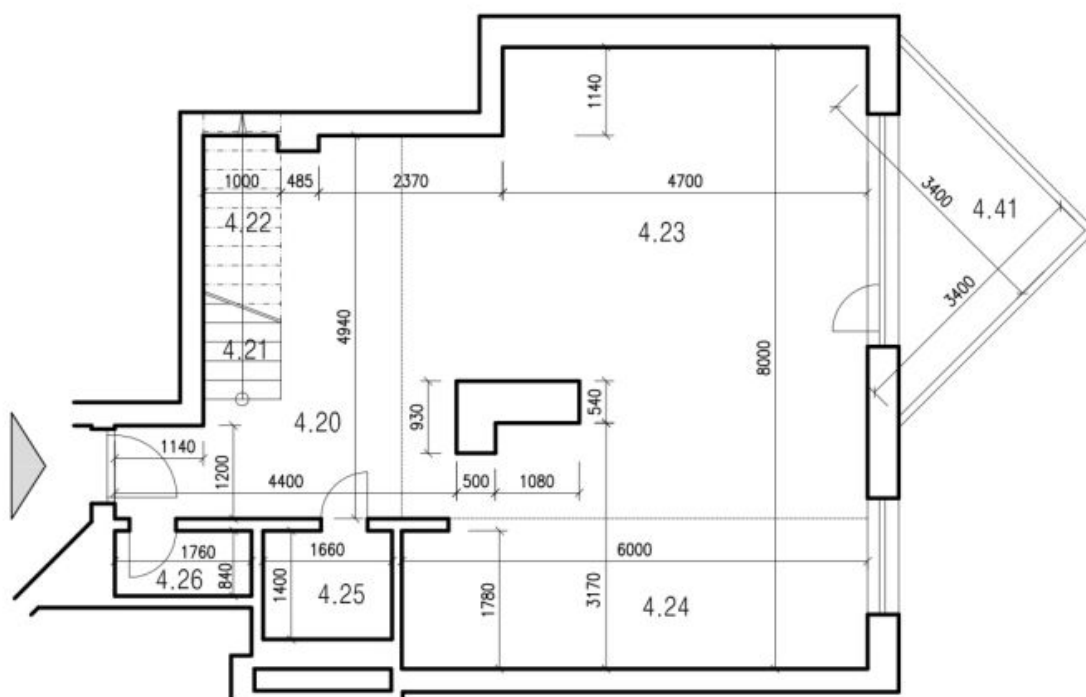
Apartment Three-bedroom (4+kk)

Rented

137 m², Bratislava I, Staré Mesto, Tichá

ý byt - vstup na 4.p. (4.NP na úrovni +10,200 m podľa PD)

4.p. (4.NP)

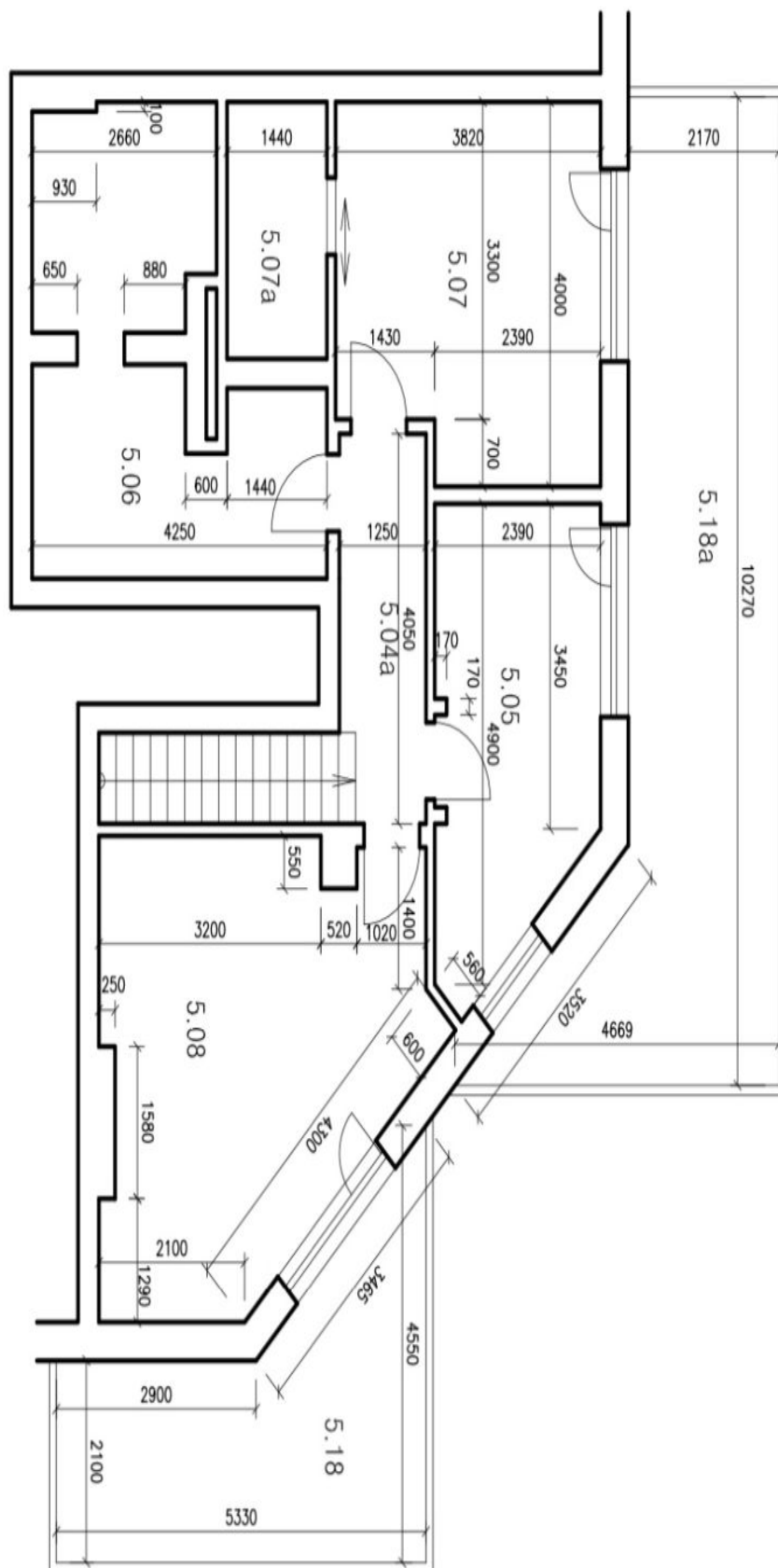




Apartment Three-bedroom (4+kk)

137 m², Bratislava I, Staré Mesto, Tichá

Rented



mezonetový byt - vstup na 4.p. (4.NP na úrovni +10,200 m podľa PD)
pôdorys na 5.p. (5.NP)