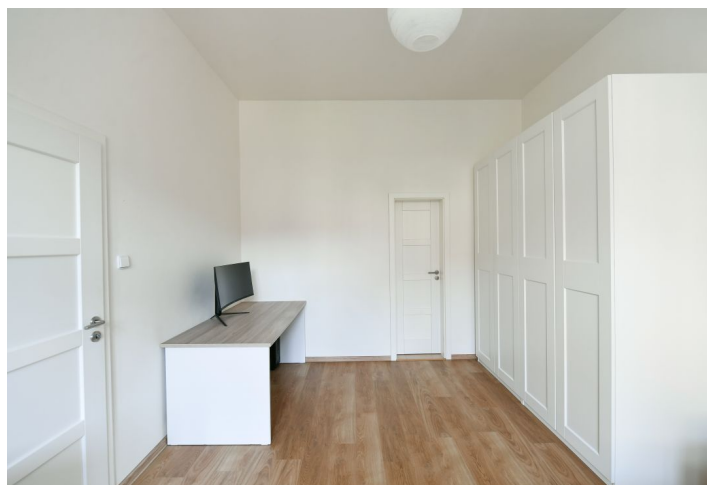




## Apartment One-bedroom (2+kk)

Sold

48 m<sup>2</sup>, Prague 10, Vršovice, Žitomířská





## Apartment One-bedroom (2+kk)

**Sold**48 m<sup>2</sup>, Prague 10, Vršovice, Žitomířská

Total area	48 m <sup>2</sup>
Parking	-
Cellar	Yes
PENB	E
Reference number	102758

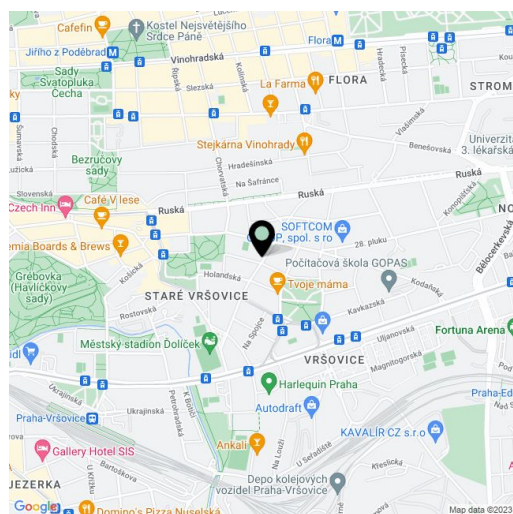
**This completely renovated apartment with west-facing windows providing nice views of the greenery lining the street is located on a one-way side street in Prague 10 at the junction of Vršovice and Vinohrady, within easy reach of everything you need.**

The layout of the 1st floor apartment consists of a living room with a kitchen, a bedroom, a bathroom (with a bathtub, shower, washing machine connection), a separate toilet, a foyer, and a storage room. Both rooms face west towards a quiet street.

The apartment was **completely renovated** in 2019; floors are new vinyl, the bathroom and the toilet have **heated tiles**. In March 2023, the windows were replaced with **new casement ones with heat-insulating double-glazing** on the exterior side and single-glazing on the interior side. The kitchen is fully equipped, including a dishwasher, fridge-freezer, electric oven, microwave, and induction hob. Heating is by electric direct heaters, and can be changed to gas heating. The apartment comes with a **cellar storage unit**. The building has well-maintained common areas and a **common courtyard with a sitting area in the fresh air. No elevator.**

There are many cafes, bakeries, restaurants, and small shops nearby. The Eden shopping center and several **indoor and outdoor sports fields** are within walking distance. A few steps lead to a kindergarten and elementary school, and bit further on to **Heroldovy Sady** and Svatopluka Čecha Square with a **park**. Buses and trams stop not far from the building, and the ride to the city center takes less than 10 minutes.

Floor area 48 m<sup>2</sup>, cellar 3 m<sup>2</sup>.



\* Area of the unit according to the Civil Code. The area consists of the sum total area of the entire unit bounded by perimeter walls.