



## House Eight-bedroom (9+1)

Ask for price

367 m<sup>2</sup>, Spišská Stará Ves, Jesenského





## House Eight-bedroom (9+1)

[Ask for price](#)

367 m², Spišská Stará Ves, Jesenského

Plot	4 801 m²
Foot print	367 m²
Parking	Yes
Cellar	Yes
PENB	G
Reference number	102826

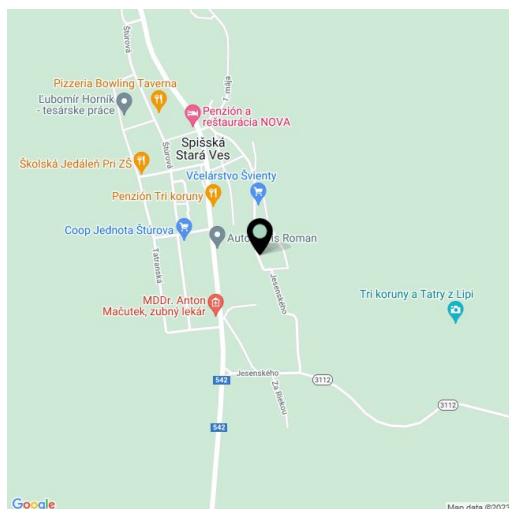
**We exclusively offer for sale this traditional mountain home known as Homestead Pieniny. On its large landscaped grounds sits a spacious family house with spectacular views of a forest, a stylish wooden chalet with an attic, and an outbuilding. The homestead is situated in a beautiful green and absolutely quiet location a stone's throw from Pieniny National Park.**

The estate consists of a family house and a stylish wooden chalet. The large country-style house has a ground floor with an entrance hall, a large fully equipped kitchen with a pantry, a living room with a ceramic stove, and a large lounge with a fireplace and amazing views. On the opposite side of the kitchen are two toilets, a cloakroom, and a utility room. From the living room, a beautiful wooden staircase leads to the 1st floor, which consists of 5 spacious bedrooms with en-suite bathrooms (shower, sink, and toilet). Next to the house is an outdoor toolshed. The estate has its own driveway with parking below the house.

The wooden chalet is designed in a traditional alpine style and is used as a retreat with a chalet with a wellness area (booking.com rating of 9.8). The chalet consists of a large living room with access to the terrace through large sliding doors and to the sauna overlooking the forest. Right by the entrance, there is a staircase to the first floor with a gallery, where there is space for two large beds. There is a spacious wooden terrace with a whirlpool Jacuzzi. The entire log cabin is heated by a single fireplace.

The main building is a new construction using high-quality materials. The windows, doors, and floors are made of high-quality wood. Heat is provided by a Viessmann gas boiler and a fireplace with a vent to the upper floor, the lower floor outside the rooms has underfloor heating. The hot water is circulated. The whole house has a LAN network. The log cabin has a Canadian spline 24 KW fireplace. The entire homestead is surrounded by a large fenced property with trees, an outbuilding, and a small playground.

This very quiet place in the heart of nature is ideally located on the outskirts of a town enveloped by woods. The homestead offers the opportunity to relax in the beautiful nature of the Pieniny Mountains. Nearby is a bus stop, and by car you can reach Pieniny National Park, as well as the High Tatras, in a few minutes. The town is full of amenities and the nearest larger town is Kežmarok or Stará Lubovňa. The surrounding area is varied and interesting—you can visit the nearby spa or cultural monuments (castle, chateau, or museum). There is also a number of excellent restaurants and cafés where you can enjoy traditional Slovak cuisine. Spišská Stará Ves lies on the border with Poland.





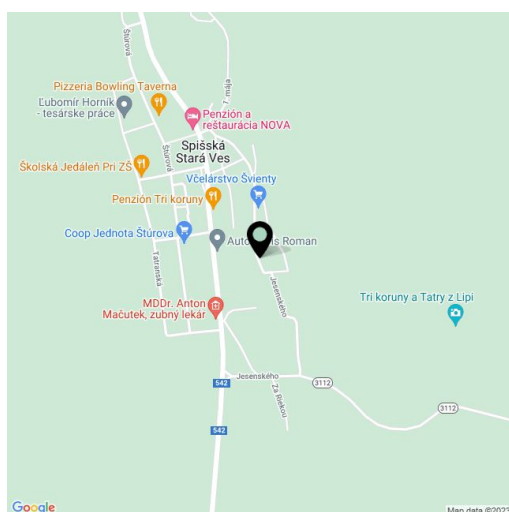
## House Eight-bedroom (9+1)

Ask for price

367 m<sup>2</sup>, Spišská Stará Ves, Jesenského

Plot	4 801 m <sup>2</sup>
Foot print	367 m <sup>2</sup>
Parking	Yes
Cellar	Yes
PENB	G
Reference number	102826

The usable area of house 241 m<sup>2</sup> (built-up area 184 m<sup>2</sup>), chalet 58 m<sup>2</sup> (built-up area 127 m<sup>2</sup>), outbuilding 42 m<sup>2</sup>, garden gazebo 14 m<sup>2</sup>, land total 4,801 m<sup>2</sup>.  
Without further remodeling, the homestead offers up to 14 beds.

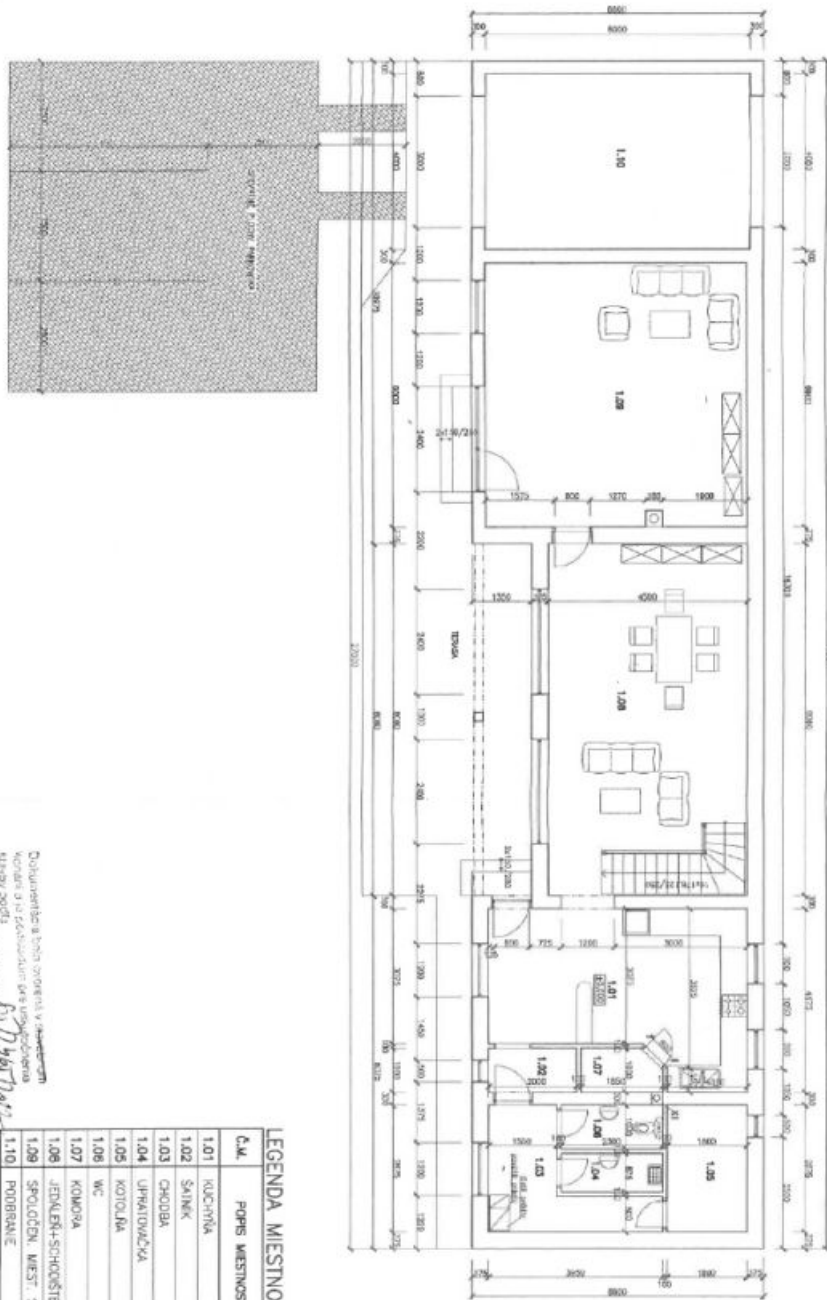




# House Eight-bedroom (9+1)

367 m<sup>2</sup>, Spišská Stará Ves, Jesenského

Ask for price



2024.09.22  
19.12.2019  
807/141/2019  
Dokumentácia bola overená v zmluvnom  
notárskom úrade  
dátumom vydania a  
dátumom predania a t.j.

**LEGENDA MIESTNOSTI**

Č. M.	POPIS MIESTNOSTI	PLOCHA m <sup>2</sup>	PODLAHA	STREŠNÝ POKRYV
1.01	KUCHENKA	20,12	KERAMICKÁ DLAŽBA SI	KLADIA GRETEL
1.02	SÁLNIK	2,00	KERAMICKÁ DLAŽBA SI	PERFOR. STREŠNÝ
1.03	CHODBA	6,40	KERAMICKÁ DLAŽBA SI	KLADIA GRETEL
1.04	UPRAVDIACIVA	2,00	KERAMICKÁ DLAŽBA SI	PERFOR. STREŠNÝ
1.05	KOTOLNA	5,20	KERAMICKÁ DLAŽBA SI	KLADIA GRETEL
1.06	WC	2,30	KERAMICKÁ DLAŽBA SI	PERFOR. STREŠNÝ
1.07	KOMORA	1,70	KERAMICKÁ DLAŽBA SI	KLADIA GRETEL
1.08	JEDLEŇA-SPOKOŠTE	36,00	DREVENÁ PODLAHA SI	KLADIA GRETEL
1.09	SPOLOČN. MIEST. S KREBOM	36,60	DREVENÁ PODLAHA SI	KLADIA GRETEL
1.10	PODPRÁVIE	24,00	LAAMANT KAMEN	KLADIA GRETEL

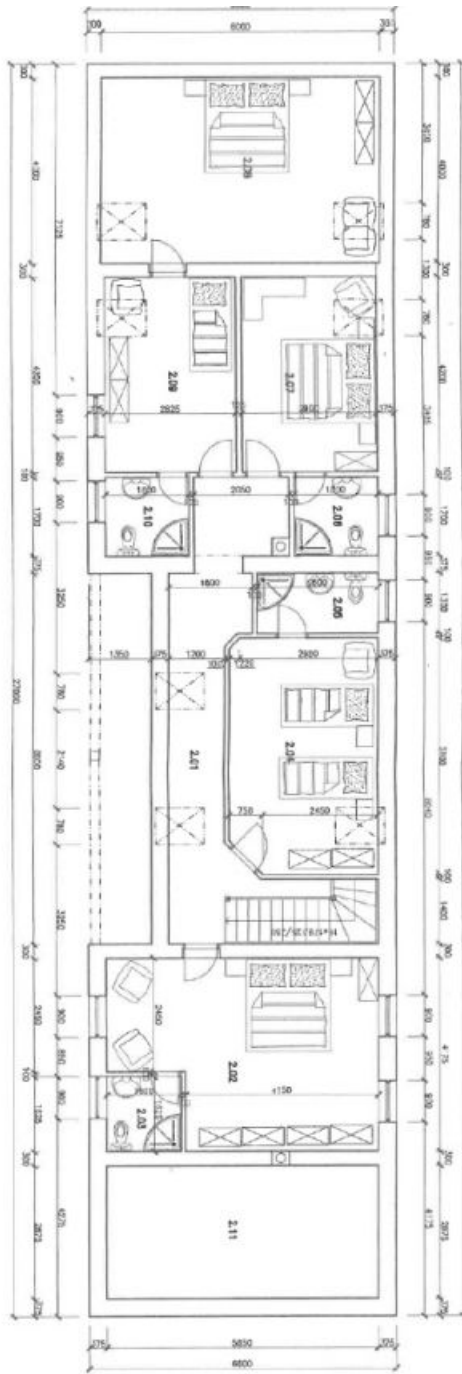
X1 VETRAČIE POTRUBIE VVEDENÉ NAD STREŠNÝ PLOŠŤ



# House Eight-bedroom (9+1)

367 m<sup>2</sup>, Spišská Stará Ves, Jesenského

Ask for price



Handwritten notes and signatures, including a date '22.12.2024' and a signature 'M. P. ...'.

X1 VETRAČIE POTRUBIE VYVEDENÉ NAD STREŠNÝ PLOŠŤ

Č.M.	POPIS MIESTNOSTI	PLOCHA m <sup>2</sup>	PRVNA POKRYTIA	STENY
2.01	CHODBA+SCHODISŤE	15,43	DREVENÁ POKRYTIA	HLADKÁ OBIETNA
2.02	IŽBA	21,50	DREVENÁ POKRYTIA	HLADKÁ OBIETNA
2.03	KOPELNA/VN	2,66	KERAMICKÁ DLAŽBA	HLADKÁ OBIETNA
2.04	IŽBA	15,06	DREVENÁ POKRYTIA	HLADKÁ OBIETNA
2.05	KOPELNA/VN	3,43	KERAMICKÁ DLAŽBA	HLADKÁ OBIETNA
2.06	KOPELNA/VN	3,10	KERAMICKÁ DLAŽBA	HLADKÁ OBIETNA
2.07	IŽBA	12,20	DREVENÁ POKRYTIA	HLADKÁ OBIETNA
2.08	IŽBA	24,30	DREVENÁ POKRYTIA	HLADKÁ OBIETNA
2.09	IŽBA	11,90	DREVENÁ POKRYTIA	HLADKÁ OBIETNA
2.10	KOPELNA/VN	3,10	KERAMICKÁ DLAŽBA	HLADKÁ OBIETNA
2.11	POVALOVÝ PRIESTOR	16,80	DREVENÁ POKRYTIA	HLADKÁ OBIETNA