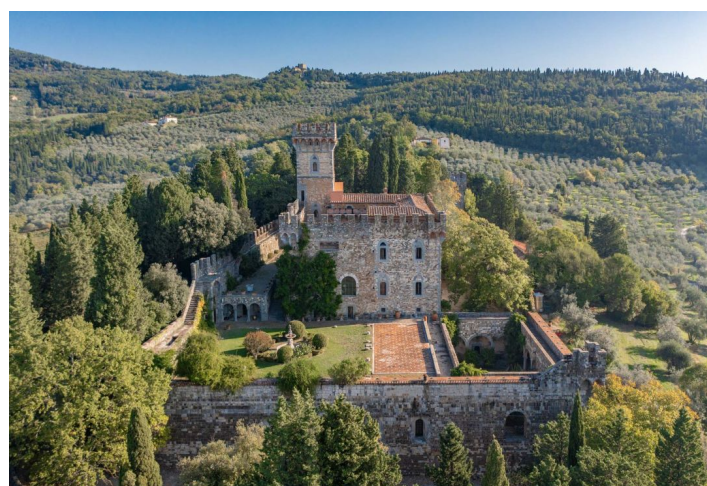




Historic property Nineteen-bedroom (20+kk)

€ 18 422 613 | CZK 466 000 000

Florence, Tuscany



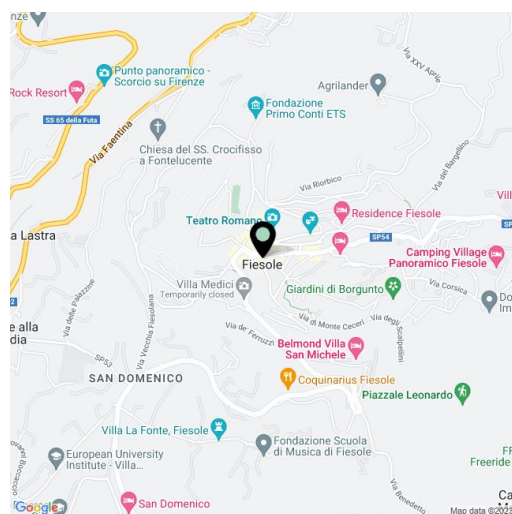


Historic property Nineteen-bedroom (20+kk)

€ 18 422 613 | CZK 466 000 000

Florence, Tuscany

Total area	1 300 m ²
Foot print	2 140 m ²
Plot	140 000 m ²
Parking	-
PENB	G
Reference number	103096



This majestic castle, known as Castello di Vincigliata, is perched atop a hill overlooking the historic center of Florence. Offering breathtaking panoramic views, the property has been richly and masterfully restored since the late 19th century. The castle, with an area of 2,300 sq. m., has a long and rich history dating back almost a millennium. It exudes a unique charm, having hosted once-in-a-lifetime events and ceremonies. The buildings around the castle, totaling over 1,300 sq. m., present an opportunity for developing accommodation facilities or reinitiating wine and olive oil production. Complete services are within reach, with the nearest town just a 5-minute drive away, and the historic center of Florence easily accessible in less than ten minutes by car. The Florence airport is only half an hour from the castle, offering numerous international flights to various European destinations.

The castle, spanning 2,300 sq. m., offers 8 bedrooms and 12 bathrooms, surrounding a beautiful central courtyard and terrace with stunning views. Additionally, there are other buildings on the property, such as a tower, farmhouses, and an old foundry. The interiors feature stone walls, wooden beams, and terracotta floors, lending an authentic and rustic charm. The high number of windows let in ample light. The 3,056 sq. m. garden is tastefully designed in a typical Florentine style with cypress and bay trees, complementing this Tuscan idyll with views of vineyards and olive groves.

There are several other buildings on the property. The 65 sq. m. tower offers four floors. The ground floor hosts a spacious living room with a kitchenette, and there are three bedrooms, each with its own bathroom, on the upper floors. Two country houses, 315 sq. m. and 505 sq. m. resp., with the potential for customization, can be used for housing, receptions, offices, or even a wine cellar. Nearby, there is an old 250 sq. m. foundry. This space requires renovation but, with its own 1,800 sq. m. garden plot, it's a great opportunity to be converted to guest accommodation.

The interiors and exteriors exude a historical charm while also offering the potential for modern use and comfort. The 6.3 hectare vineyard and 4.2 hectare olive grove are in full production, providing an excellent opportunity to run a wine and olive oil production operation.

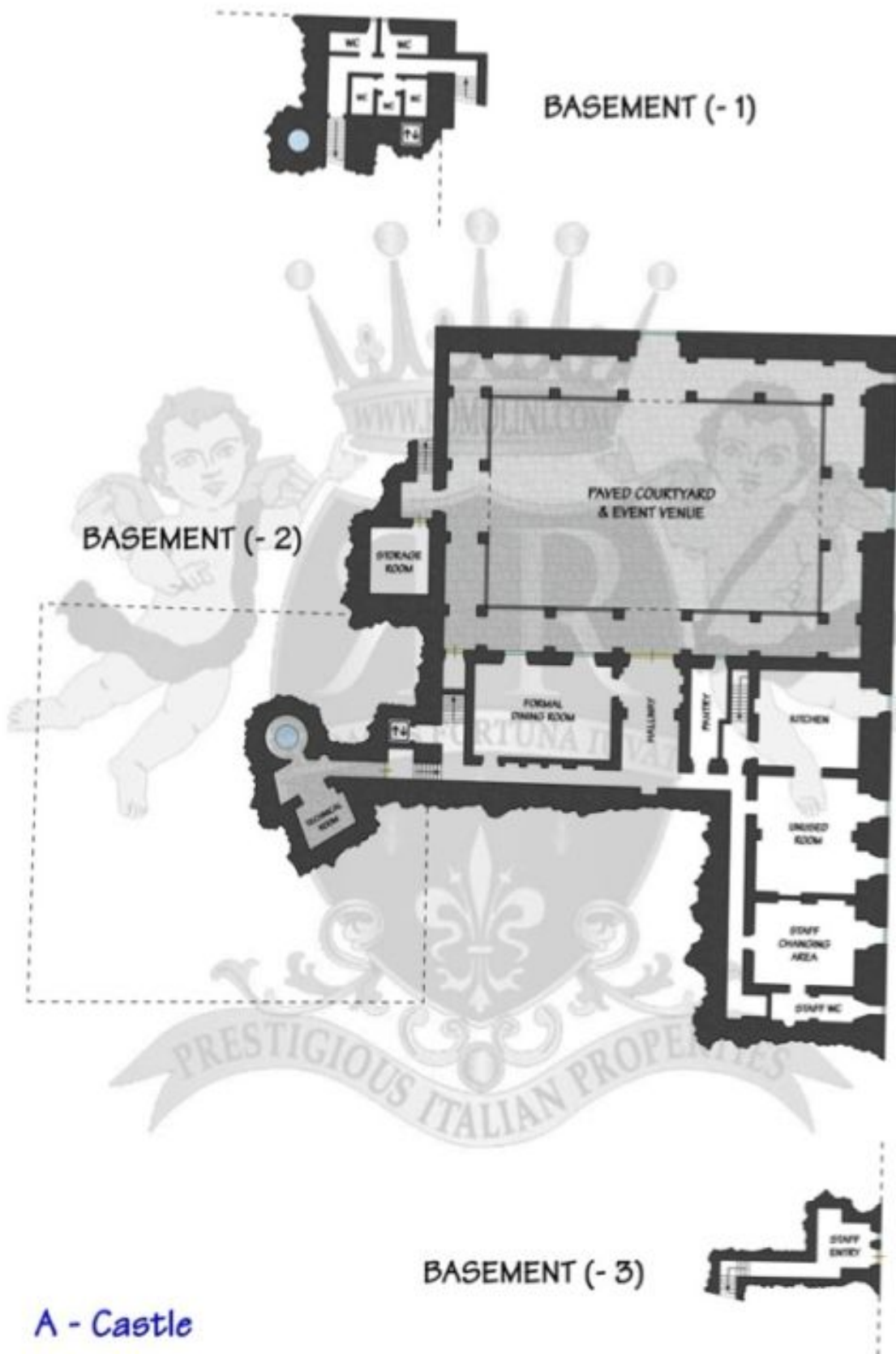
The location, near the historic center of Florence and the Chianti region, is known for its exceptional cuisine and Tuscan wine. The surroundings offer abundant amenities, restaurants, cultural events, and easy access to the Florence airport. Blending the tranquility of the countryside with the convenience of the city, it offers an exceptional Tuscan lifestyle.



Historic property Nineteen-bedroom (20+kk)

€ 18 422 613 | CZK 466 000 000

Florence, Tuscany



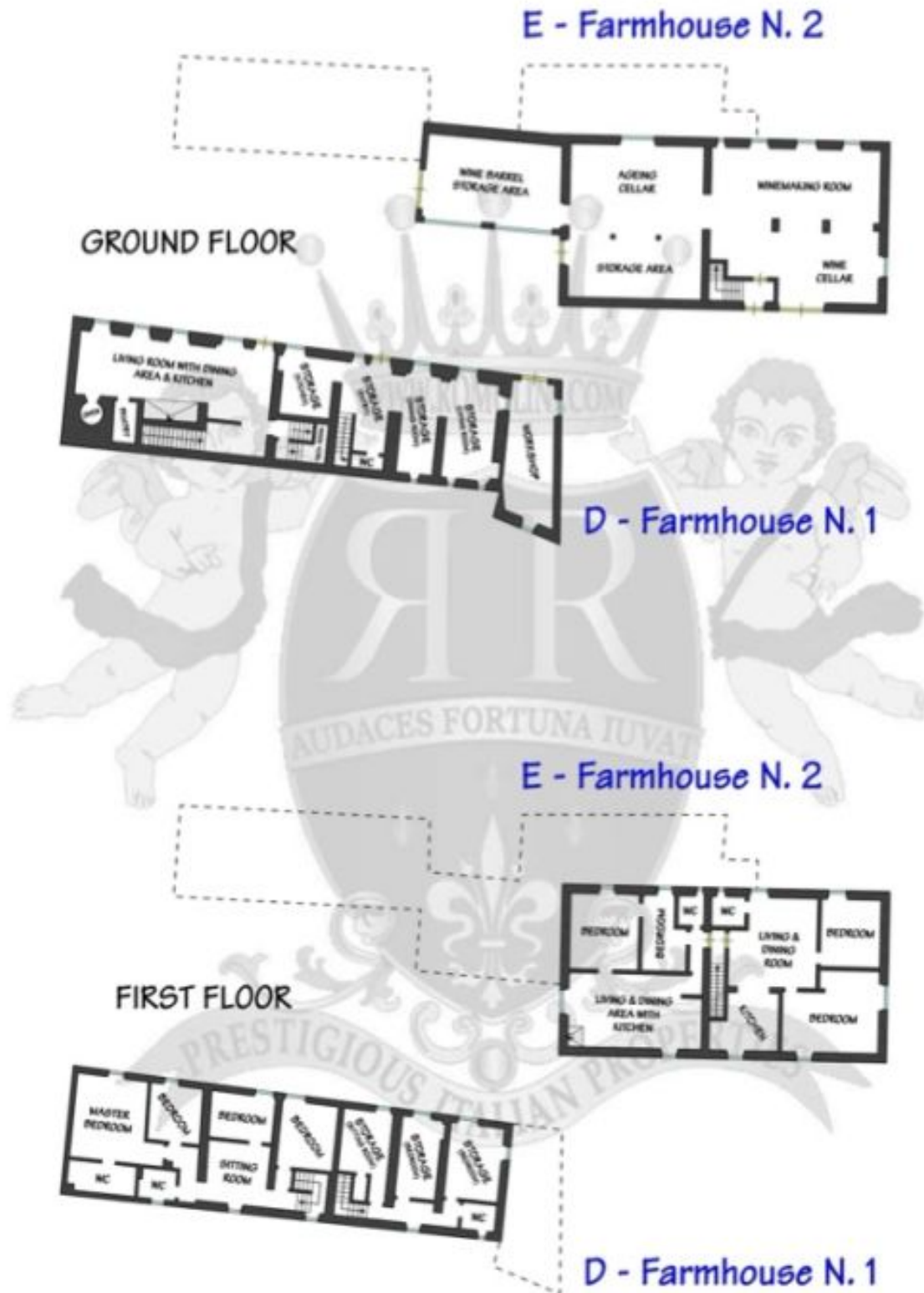
A - Castle



Historic property Nineteen-bedroom (20+kk)

€ 18 422 613 | CZK 466 000 000

Florence, Tuscany



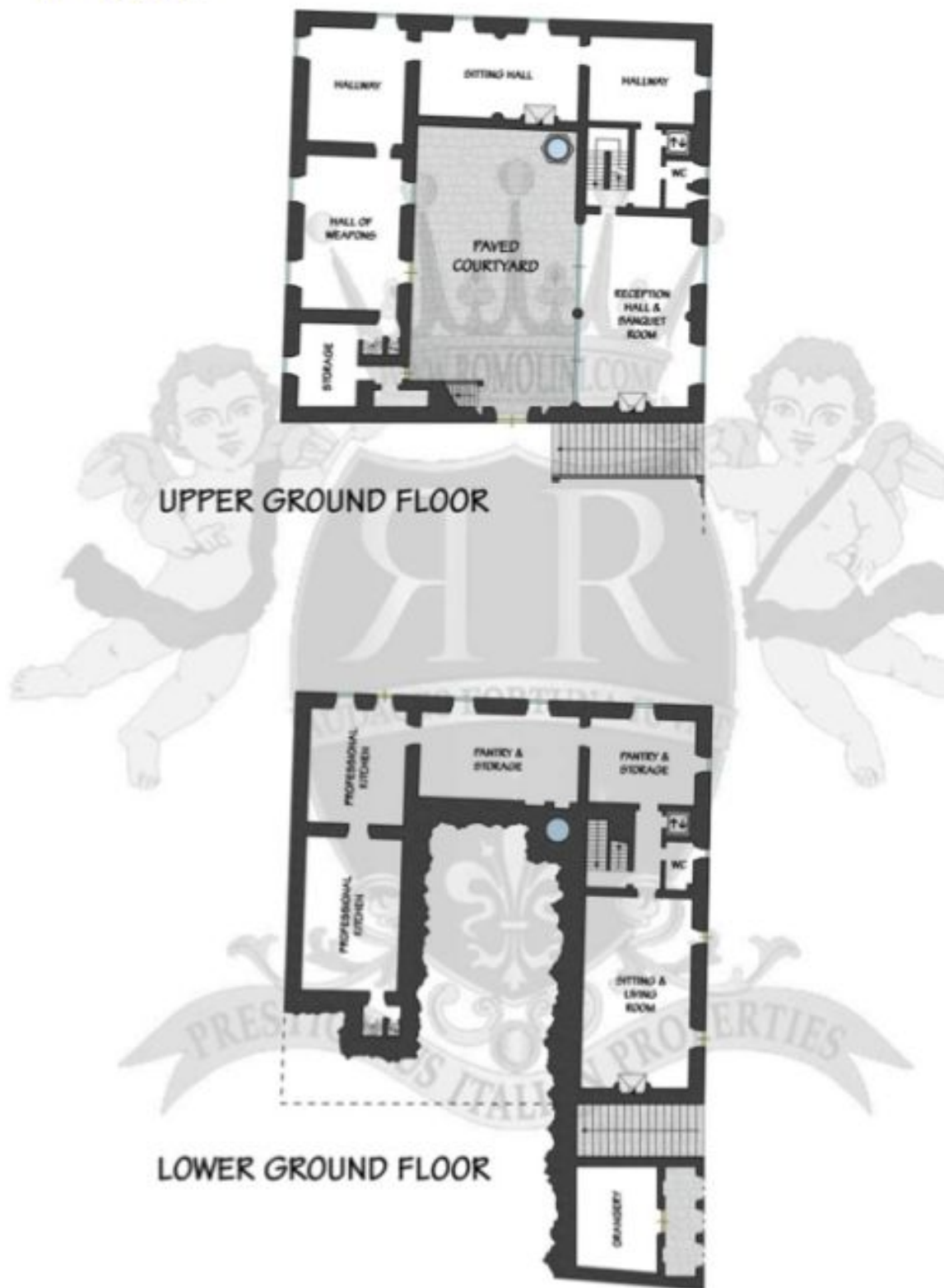


Historic property Nineteen-bedroom (20+kk)

€ 18 422 613 | CZK 466 000 000

Florence, Tuscany

A - Castle

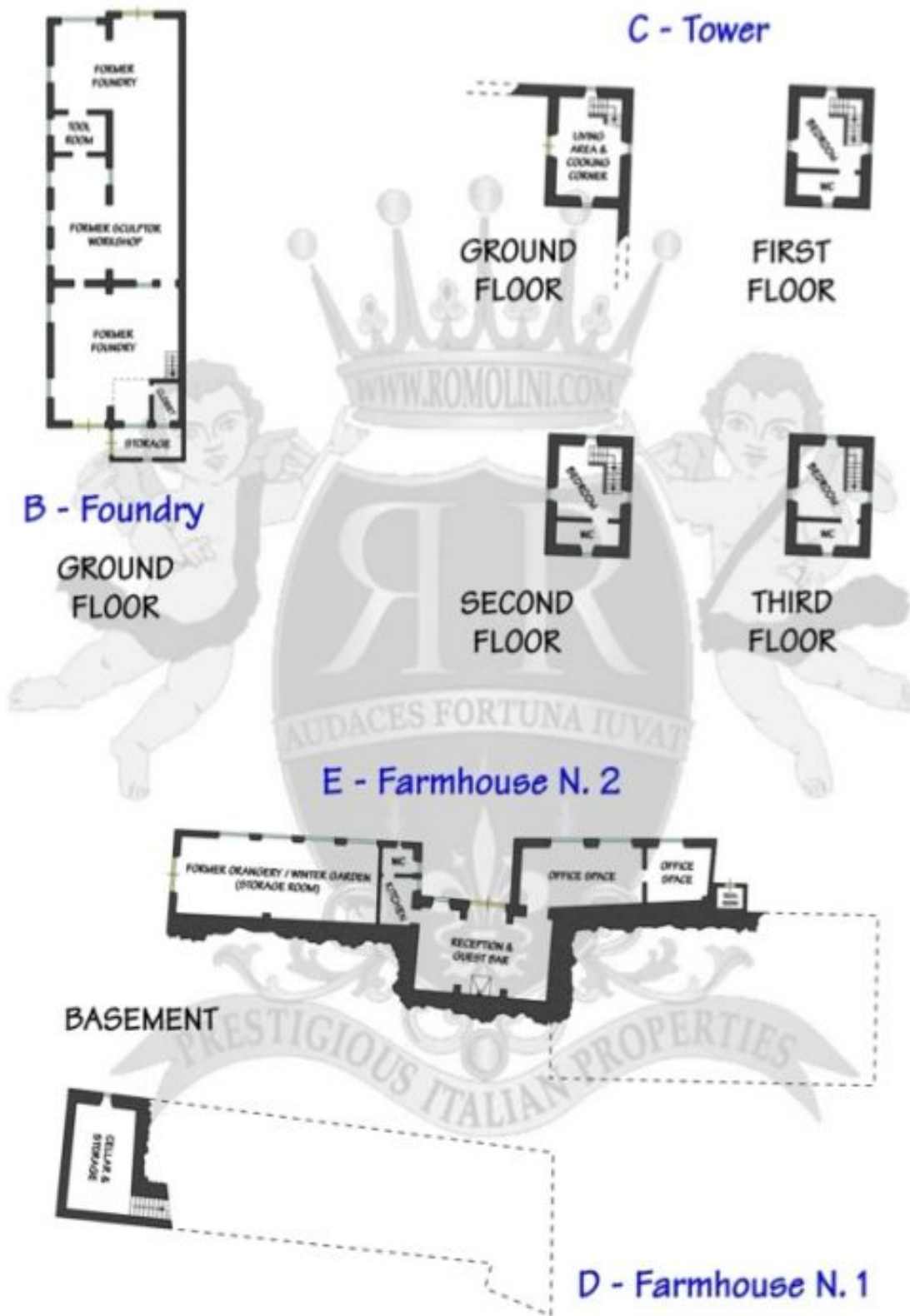




Historic property Nineteen-bedroom (20+kk)

€ 18 422 613 | CZK 466 000 000

Florence, Tuscany





Historic property Nineteen-bedroom (20+kk)

€ 18 422 613 | CZK 466 000 000

Florence, Tuscany

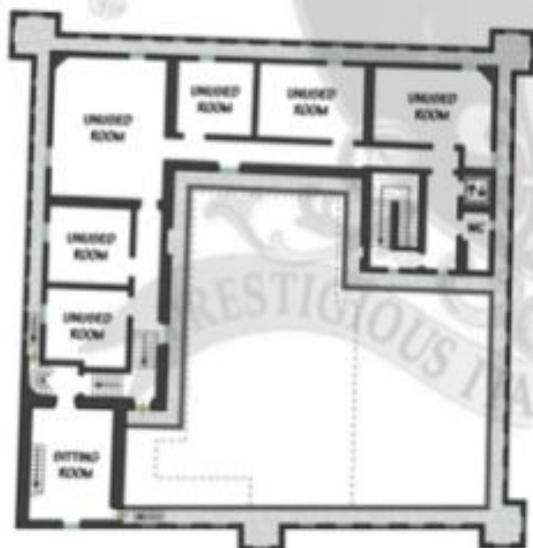
A - Castle



FIRST FLOOR



MEZZANINE FLOOR



SECOND FLOOR



THIRD &
FOURTH FLOOR