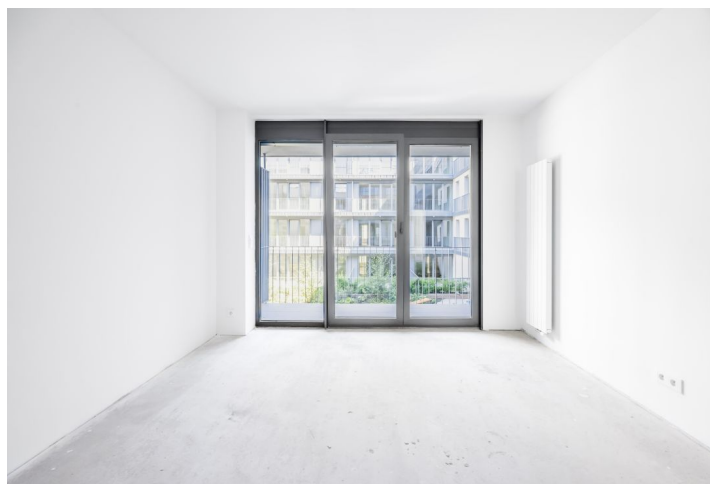




Apartment Three-bedroom (4+kk)

€ 459 862 | CZK 11 480 450

128 m², Ostrava-město, Moravská Ostrava, Masarykovo náměstí





Apartment Three-bedroom (4+kk)

€ 459 862 | CZK 11 480 450

128 m², Ostrava-město, Moravská Ostrava, Masarykovo náměstí

| | |
|------------------|--------------------------------|
| Total area | 137 m ² |
| Floor area* | 128 m ² |
| Balcony | 9 m ² |
| Parking | Parking space at an extra cost |
| Garage | Yes |
| Cellar | 3 m ² |
| PENB | B |
| Reference number | 103160 |

This bright apartment with two balconies and the possibility of purchasing a garage parking space is part of the unique Nové Lauby residential complex. This new project is being created right in the center of Ostrava near Masaryk Square with a fountain, within walking distance of a full range of services and a park.

The layout consists of a living room with a preparation for a kitchen, 3 bedrooms, a walk-in closet, two bathrooms with a toilet, a guest toilet, and an entrance hall. One balcony is accessible from the living room and one from the bedroom.

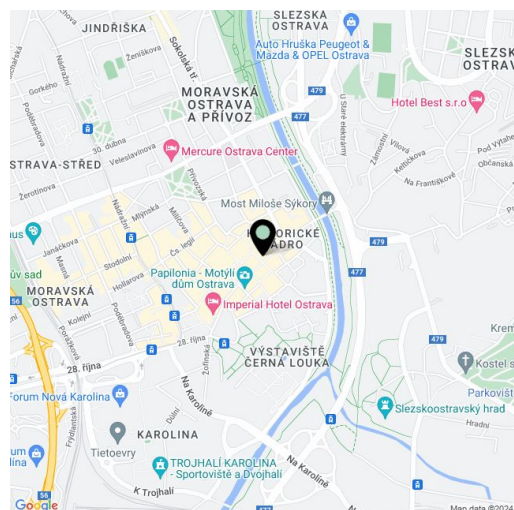
The project was designed by the **renowned znamení čtyř - architekti studio**. The new five-story building will be covered with **greenery**, and a **landscaped atrium** will be created in the complex's center. The interior is illuminated by large-format windows with aluminum or wooden frames and electrically controlled blinds. Floors will be three-layer **oak** combined with large-format **Betonico** tiles (60 × 60 cm). The standard facilities also include a **video intercom**. **There is a possibility to buy a parking space.**

The apartment complex will become a natural part of the historic center of Ostrava. In the area around Masaryk Square, you can enjoy cafes, restaurants, a shopping center, a museum, a cinema, or a library. Schools and the Antonín Dvořák Theater are a few minutes' walk away. Part of the city monument zone is the large park on Černá Louka and the Ostravice River is lined with bike paths.

Floor area 128 m², balconies 3.5 m² and 5.5 m², a cellar 2.69 m².

Used photos are of a neighbouring unit.

For more information about the project, visit the website www.novelauby.cz



* Area of the unit according to the Civil Code. The area consists of the sum total area of the entire unit bounded by perimeter walls.