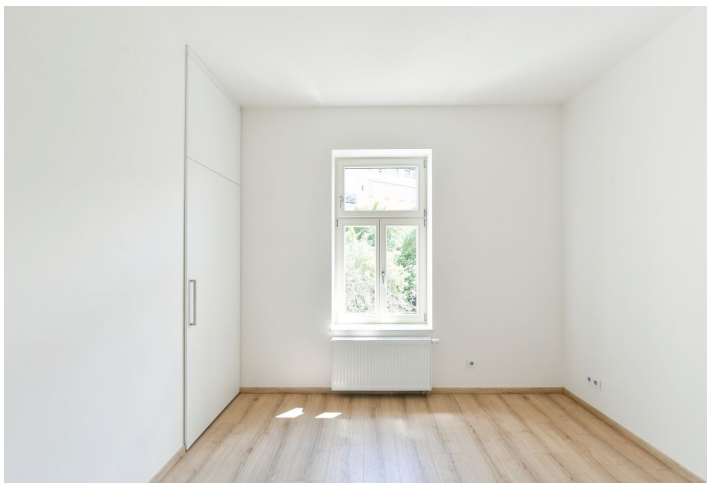




## Apartment One-bedroom (2+1)

Sold

59 m<sup>2</sup>, Prague 6, Břevnov, Závěrka





## Apartment One-bedroom (2+1)

**Sold**59 m<sup>2</sup>, Prague 6, Břevnov, Závěrka

Total area	59 m <sup>2</sup>
Parking	-
Cellar	-
Service price	2 318 CZK monthly
PENB	E
Reference number	103235

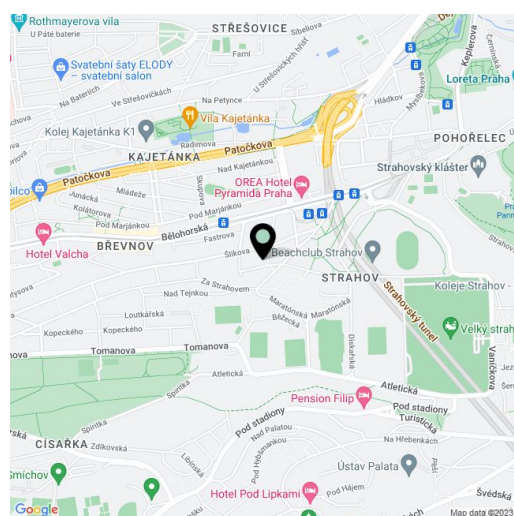
This completely renovated apartment with a bedroom facing a peaceful garden is located on the 2nd floor of a historic building with a new elevator. The boutique apartment building is part of an attractive area in Prague 6 - Břevnov, in the Tejnka city monument zone, close to Ladronka Park and Prague Castle.

The layout consists of a spacious living room, a kitchen with a dining area, a bedroom, a bathroom with a shower, a separate toilet, and an entrance hall.

The apartment has been renovated and has new wooden Euro windows and a security entrance door. The bedroom has a built-in dressing room, and the hall built-in wardrobes. Heating is provided by a gas boiler. A shared landscaped garden is available to the residents.

This nice place is tucked away from the hustle and bustle of the city center and at the same time is within easy reach of everything you need. State and private schools are in the vicinity, including the prestigious J. Kepler High School, medical services, and many shops, cafes, bistros, restaurants, and sports grounds. An excellent connection to the city center is provided by trams from a nearby stop. Ladronka Park is just a few minutes' walk away, and you can also walk to Prague Castle, the Great Strahov Garden, or the Břevnov Monastery Garden.

Floor area 59 m<sup>2</sup>.



\* Area of the unit according to the Civil Code. The area consists of the sum total area of the entire unit bounded by perimeter walls.



# Apartment One-bedroom (2+1)

Sold

59 m<sup>2</sup>, Prague 6, Břevnov, Závěrka

