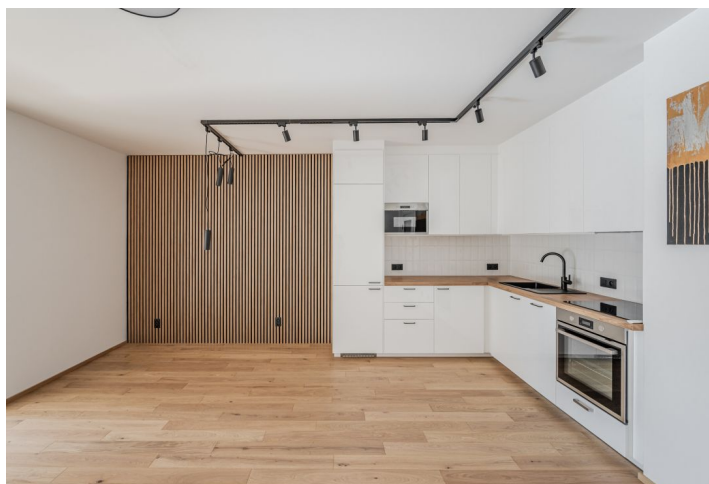
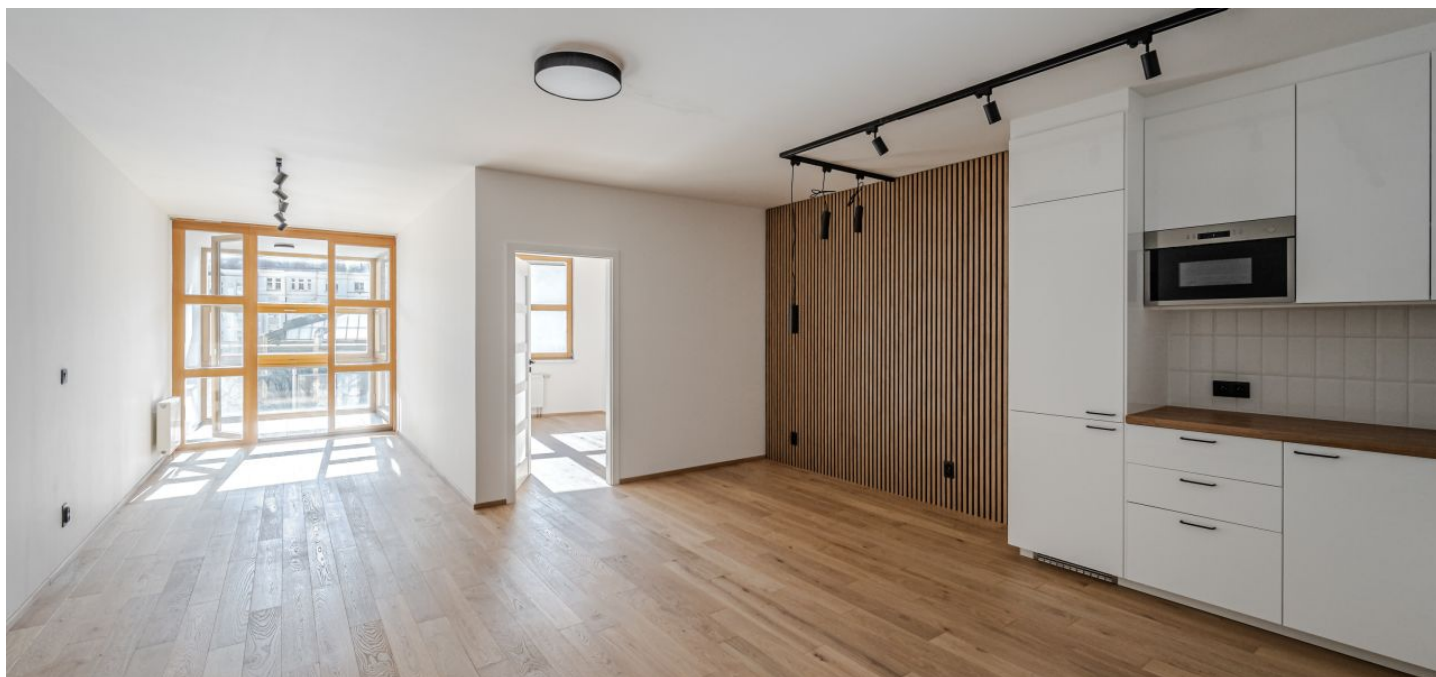




## Apartment One-bedroom (2+kk)

Sold

63 m<sup>2</sup>, Prague 5, Smíchov, Tomkova





## Apartment One-bedroom (2+kk)

**Sold**63 m<sup>2</sup>, Prague 5, Smíchov, Tomkova

Total area	63 m <sup>2</sup>
Parking	1 garage parking space
Garage	Yes
Cellar	2 m <sup>2</sup>
Service price	3 819 CZK monthly
PENB	D
Reference number	103247

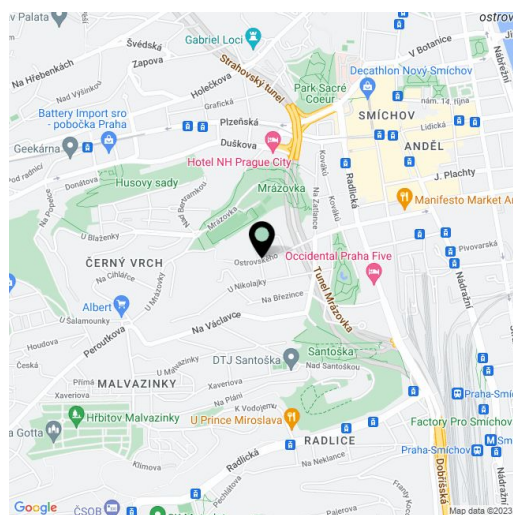
This south-facing apartment with a winter garden and a garage parking space is part of a residential project located in a beautifully green area in Prague 5 - Smíchov. In addition to peace, the advantages of the location include walking distance to the Anděl pedestrian zone with all the necessary amenities.

The area of the 3rd floor apartment consists of a bright living room with a kitchen and a sunny winter garden, 1 bedroom, a foyer, and a bathroom with a bathtub, shower screen, toilet, sink, connection for a washing machine, and a heated towel rail.

The building was completed in 2000, and the apartment has just been renovated. Floors are made of oiled, brushed oak from the Empiri Woods Design brand, the windows are wooden, and the central heating source is the building's boiler. The kitchen is equipped with built-in appliances. The purchase price includes a garage parking space and a cellar storage unit.

Pleasantly located next to a large green area near a sports field with tennis and beach volleyball courts, within easy reach of restaurants, cafes, and shops, including supermarkets and shopping and entertainment centers. A metro station and a tram stop are a few minutes' walk away.

Floor area 62.69 m<sup>2</sup>, cellar 1.94 m<sup>2</sup>.



\* Size of the unit according to the Housing Act.

The area consists of the sum total of the internal area of every room.