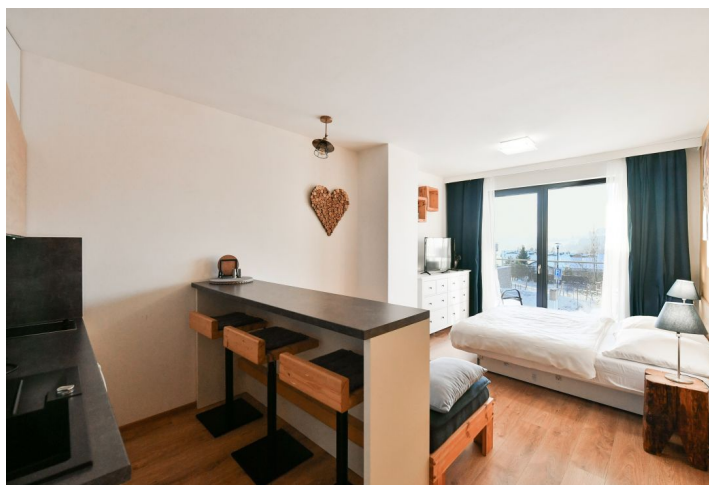
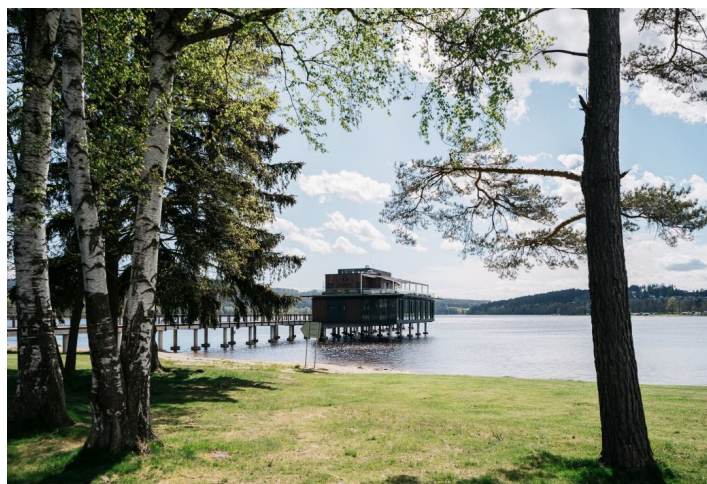




## Apartment Studio (1+kk)

€ 154 396 | CZK 3 890 000

30.9 m<sup>2</sup>, Český Krumlov, Lipno nad Vltavou





## Apartment Studio (1+kk)

€ 154 396 | CZK 3 890 000

30.9 m<sup>2</sup>, Český Krumlov, Lipno nad Vltavou

Total area	39 m <sup>2</sup>
Floor area*	31 m <sup>2</sup>
Terrace	8 m <sup>2</sup>
Parking	-
Cellar	Yes
PENB	G
Reference number	103683

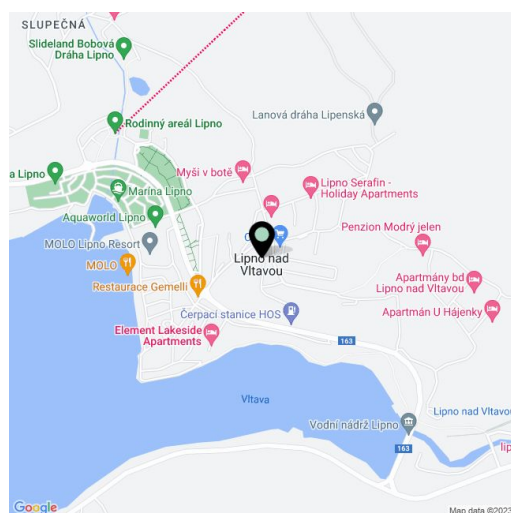
This fully furnished apartment with a west-facing terrace is part of the Korzo Lipno resort with a reception providing complete services for short-term rentals. Excellently located near a beach and a wharf, right in the town center and at the same time in a quiet part of Lipno nad Vltavou, a popular place year-round.

The layout of the studio apartment consists of a living room with a kitchen, partially separated sleeping area, and access to the **terrace**, a bathroom (with a shower, toilet, sink, and connection for a washing machine), and a foyer with a built-in wardrobe.

The apartment is offered **fully furnished** and equipped as shown in the photos. Floors are vinyl and tiled. Central heating. The apartment includes a cellar cubicle for storing skis or bicycles, and it is possible to **park** right in front of the building. Apartment owners can rely on a **reception** providing, among other things, services for short-term rentals.

The apartment is located close to the banks of the **Lipno Dam**, several restaurants and cafes, a **slope**, a **bobsleigh track**, or the **Treetop Trail**. The extensive **Království lesa** children's area is with an easy walking distance, and the place is full of bike paths and hiking trails, which in winter turn into well-maintained cross-country trails.

Floor area 30.9 m<sup>2</sup>, terrace 8 m<sup>2</sup>.



\* Area of the unit according to the Civil Code. The area consists of the sum total area of the entire unit bounded by perimeter walls.