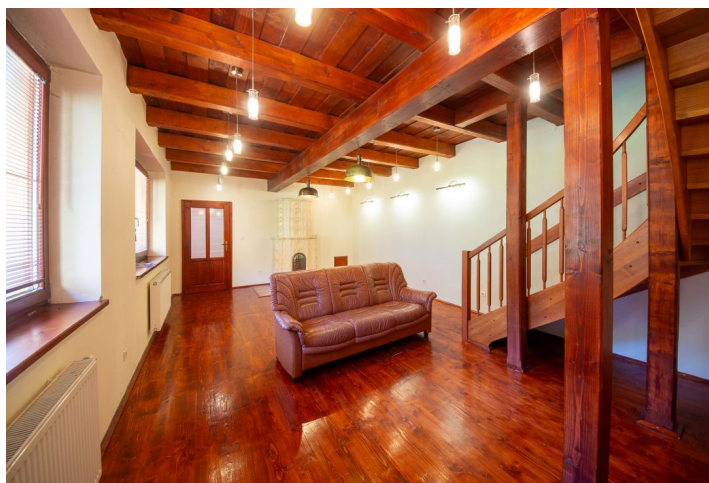




Farmhouse estate Eight-bedroom (9+kk)

€ 699 000 | CZK 17 611 305

Spišská Stará Ves, Spišská Stará Ves, Jesenského





Farmhouse estate Eight-bedroom (9+kk)

€ 699 000 | CZK 17 611 305

Spišská Stará Ves, Spišská Stará Ves, Jesenského

Usable area	367 m ²
Foot print	367 m ²
Parking	Yes
PENB	G
Reference number	104030

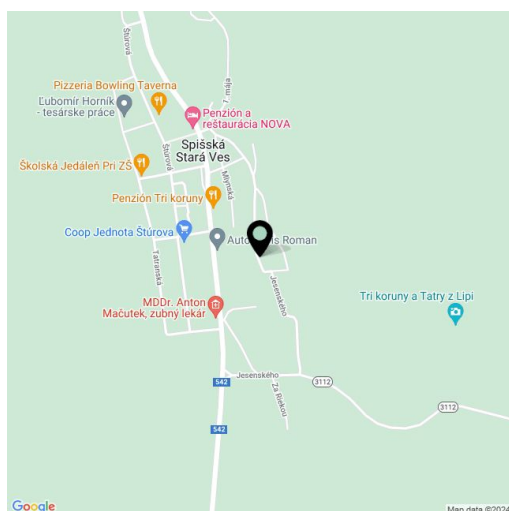
We exclusively offer for sale this traditional mountain home known as Homestead Pieniny. On its large landscaped grounds sits a spacious family house with spectacular views of a forest, a stylish wooden chalet with an attic, and an outbuilding. The homestead is situated in a beautiful green and absolutely quiet location a stone's throw from Pieniny National Park and is also suitable as a bed and breakfast.

The estate consists of a family **house** and a **stylish wooden chalet**. The large country-style house has a ground floor with an entrance hall, a large **fully equipped kitchen** with a pantry, a living room with a **ceramic stove**, and a large lounge with a **fireplace** and amazing views. On the opposite side of the kitchen are two toilets, a **cloakroom**, and a utility room. From the living room, a **beautiful wooden staircase** leads to the 1st floor, which consists of **5 spacious bedrooms** with en-suite bathrooms (shower, sink, and toilet). Next to the house is an outdoor toolshed. The estate has its own driveway with parking below the house.

The wooden chalet is designed in a **traditional alpine style** and is used as a retreat with a **chalet with a wellness area** (booking.com rating of 9.8). The chalet consists of a large living room with access to the **terrace** through large sliding doors and to the **sauna** overlooking the forest. Right by the entrance, there is a staircase to the first floor with a gallery, where there is space for two large beds. There is a spacious **wooden terrace** with a whirlpool **Jacuzzi**. The entire log cabin is heated by a single fireplace.

The main building is a new construction using high-quality materials. The windows, doors, and floors are made of **high-quality wood**. Heat is provided by a **Viesmann** gas boiler and a **fireplace** with a vent to the upper floor, the lower floor outside the rooms has **underfloor heating**. The hot water is circulated. The whole house has a **LAN network**. The log cabin has a Canadian spline 24 KW fireplace. The entire homestead is surrounded by a **large fenced property** with trees, an **outbuilding**, and a small **playground**.

This very quiet place in the heart of nature is ideally located on the outskirts of a town enveloped by woods. The homestead offers the opportunity to relax in the **beautiful nature of the Pieniny Mountains**. Nearby is a bus stop, and by car you can reach Pieniny National Park, as well as the **High Tatras**, in a few minutes. The town is full of amenities and the nearest larger town is Kežmarok or Stará Lubovňa. The surrounding area is varied and interesting—you can visit the nearby **spa** or **cultural monuments** (castle, chateau, or museum). There is also a number of excellent restaurants and cafés where you can enjoy traditional Slovak cuisine. Spišská Stará Ves lies on the border





Farmhouse estate Eight-bedroom (9+kk)

€ 699 000 | CZK 17 611 305

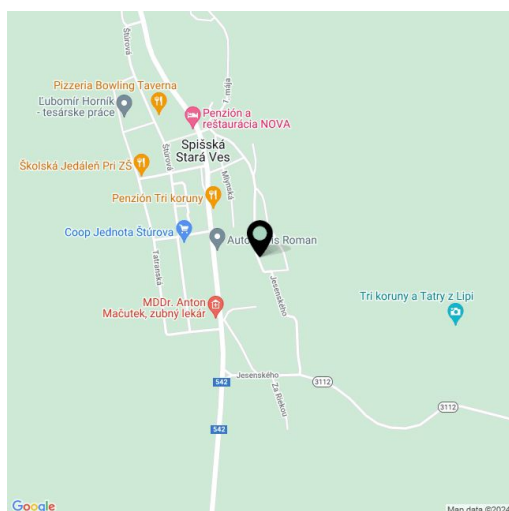
Spišská Stará Ves, Spišská Stará Ves, Jesenského

Usable area	367 m ²
Foot print	367 m ²
Parking	Yes
PENB	G
Reference number	104030

with Poland.

The usable area of house 241 m² (built-up area 184 m²), chalet 58 m² (built-up area 127 m²), outbuilding 42 m², garden gazebo 14 m², land total 4,801 m².

Without further remodeling, the homestead offers up to 14 beds.

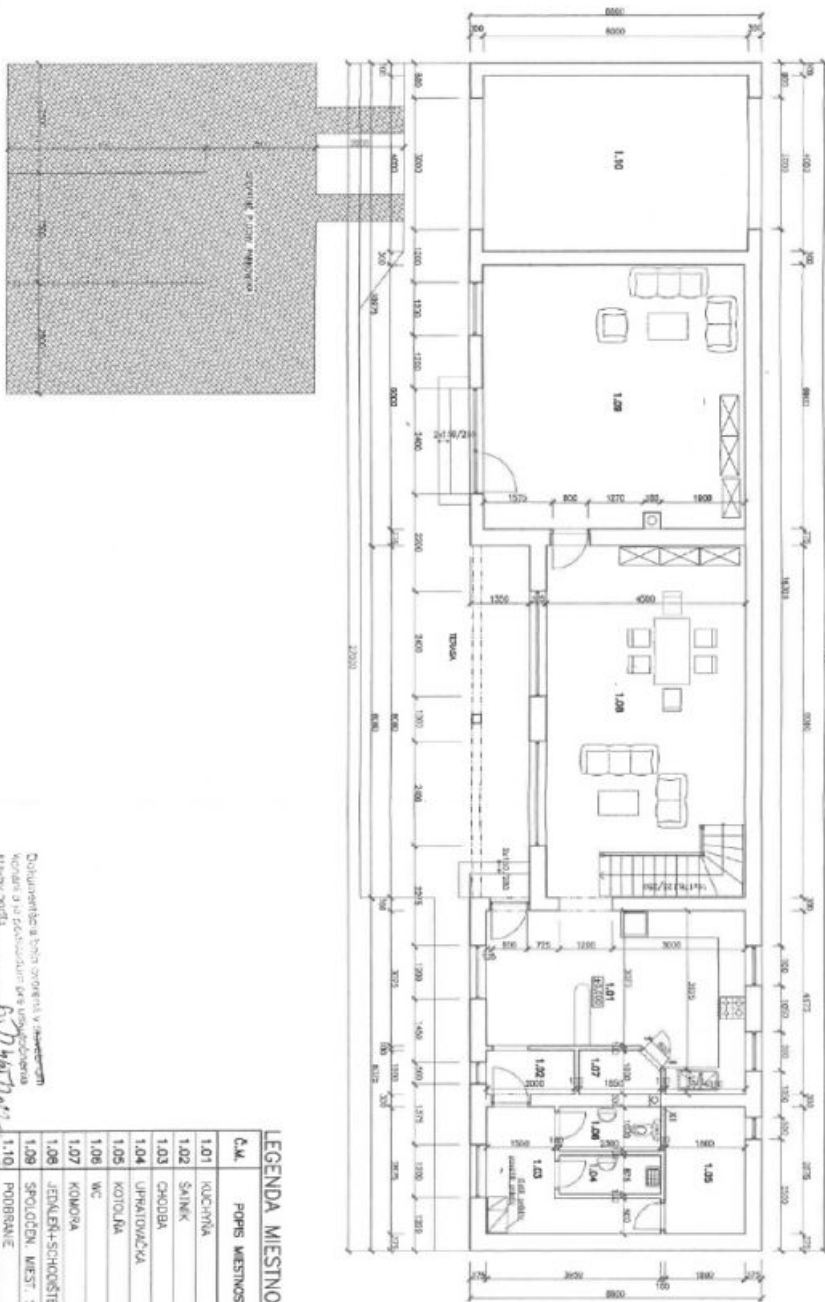




Farmhouse estate Eight-bedroom (9+kk)

€ 699 000 | CZK 17 611 305

Spišská Stará Ves, Spišská Stará Ves, Jesenského



2024/07/22
 807/14/2024
 Dokumentácia bola overená v zmluvnom
 kancelárii notára a je v súlade s
 údajmi poskytnutými klientom.
 Dokumentácia predávača a je v súlade s
 údajmi poskytnutými klientom.

LEGENDA MIESTNOSTI

Č. M.	POPIS MIESTNOSTI	PLOCHA m ²	PODLAHA	STREŠNÝ
1.01	KUCHYŇKA	20,12	KERAMICKÁ DLAŽBA SI	KLADÁ DREVA PRUHOVÝ STREK PRUHOVÝ STREK
1.02	SÁLNIK	2,00	KERAMICKÁ DLAŽBA SI	KLADÁ DREVA PRUHOVÝ STREK
1.03	CHODBA	6,40	KERAMICKÁ DLAŽBA SI	KLADÁ DREVA PRUHOVÝ STREK
1.04	UPRAVDIACIVA	2,00	KERAMICKÁ DLAŽBA SI	KLADÁ DREVA PRUHOVÝ STREK
1.05	KOTOLNA	5,20	KERAMICKÁ DLAŽBA SI	KLADÁ DREVA PRUHOVÝ STREK
1.06	WC	2,30	KERAMICKÁ DLAŽBA SI	KLADÁ DREVA PRUHOVÝ STREK
1.07	KOMORA	1,70	KERAMICKÁ DLAŽBA SI	KLADÁ DREVA PRUHOVÝ STREK
1.08	JEDLEŇA-SPOKOŠTE	36,00	DREVENÁ PODLAHA SI	KLADÁ DREVA PRUHOVÝ STREK
1.09	SPOLOČEN. MIEST. S KREBIV	38,60	DREVENÁ PODLAHA SI	KLADÁ DREVA PRUHOVÝ STREK
1.10	PODPRÁVIE	24,00	LAAMANT KAMEN	KLADÁ DREVA PRUHOVÝ STREK

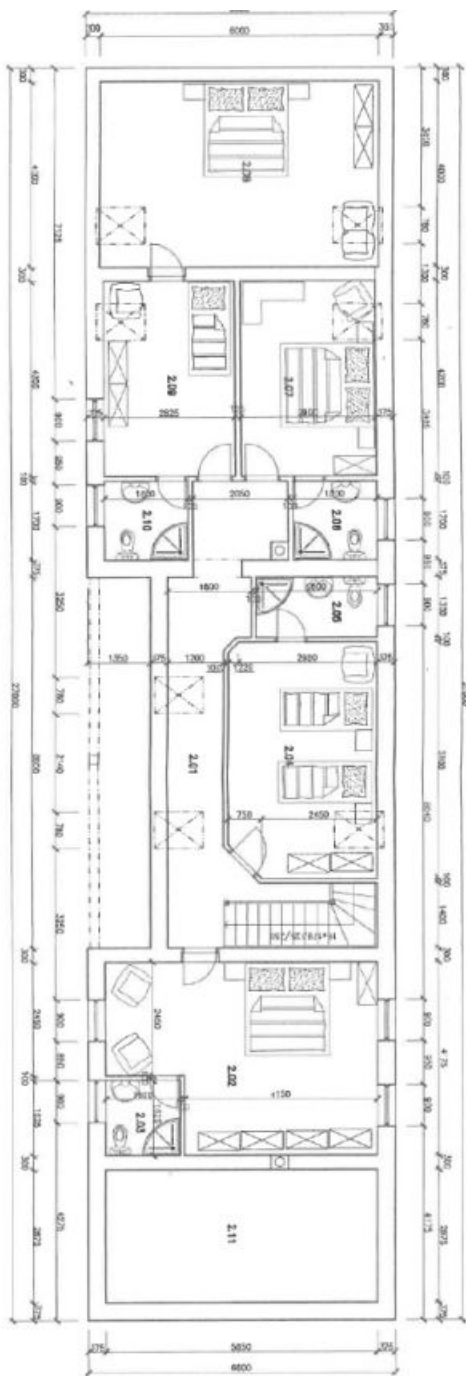
X1 VETRAČIE POTRUBIE VVEDENÉ NAD STREŠNÝ PLOŠŤ



Farmhouse estate Eight-bedroom (9+kk)

€ 699 000 | CZK 17 611 305

Spišská Stará Ves, Spišská Stará Ves, Jesenského



Handwritten notes and signatures, including a date '2024.07.23' and a signature 'M. P. ...'.

X1 VETRAČIE POTRUBIE VYVEDENÉ NAD STREŠNÝ PLOŠT'

Č.M.	POPIS MIESTNOSTI	PLOCHA m ²	PRVNA POKRYTIE	STENY
2.01	CHODBA+SCHODISTE	15,43	DREVENÁ PODLAHA	HLADKÁ OMIEŤKA
2.02	IŽBA	21,50	DREVENÁ PODLAHA	HLADKÁ OMIEŤKA
2.03	KOPELŇA/WC	2,66	KERAMICKÁ DLAŽBA	HLADKÁ OMIEŤKA
2.04	IŽBA	15,06	DREVENÁ PODLAHA	HLADKÁ OMIEŤKA
2.05	KOPELŇA/WC	3,43	KERAMICKÁ DLAŽBA	HLADKÁ OMIEŤKA
2.06	KOPELŇA/WC	3,10	KERAMICKÁ DLAŽBA	HLADKÁ OMIEŤKA
2.07	IŽBA	12,20	DREVENÁ PODLAHA	HLADKÁ OMIEŤKA
2.08	IŽBA	24,30	DREVENÁ PODLAHA	HLADKÁ OMIEŤKA
2.09	IŽBA	11,90	DREVENÁ PODLAHA	HLADKÁ OMIEŤKA
2.10	KOPELŇA/WC	3,10	KERAMICKÁ DLAŽBA	HLADKÁ OMIEŤKA
2.11	POVALOVÝ PRIESTOR	16,80	DREVENÁ PODLAHA	HLADKÁ OMIEŤKA



Farmhouse estate Eight-bedroom (9+kk)

€ 699 000 | CZK 17 611 305

Spišská Stará Ves, Spišská Stará Ves, Jesenského

