



Apartment Five-bedroom (6+kk)

€ 3 004 546 | CZK 76 000 000

209 m², Málaga, Andalusia, Málaga





Apartment Five-bedroom (6+kk)

€ 3 004 546 | CZK 76 000 000

209 m², Málaga, Andalusia, Málaga

Total area	209 m ²
Parking	2 covered parking spaces
Cellar	-
PENB	G
Reference number	104541

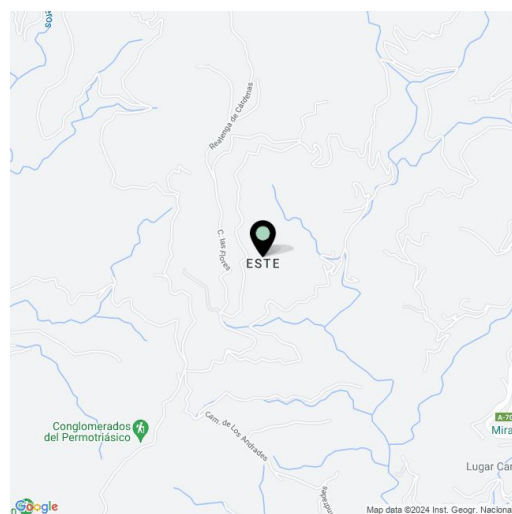
This completely furnished duplex with 5 bedrooms, 5 bathrooms, parking, a private garden, and unobstructed views of the sea is part of a beautiful villa from 1905 that stands just a few meters from a beach and 15 minutes from the city center. The apartment is nestled in one of the most beautiful and peaceful residential neighborhoods on the east side of the port city of Málaga.

On its lower level, there are 4 bedrooms with their own bathrooms and the upper level consists of a living room connected to a dining area with access to the **terrace**, a kitchen with **outdoor dining**, a bedroom with an en-suite bathroom, a toilet, and an entrance hall. The lower floor has a door that opens onto the **garden** with a **common pool** offering **gorgeous views** of the **bay**.

The building is reconstructed, yet has managed to preserve its **unique architectural style** reminiscent of **mountain chalet**. The apartment is designed according to the designs of the **prestigious Arce Interiorismo studio**, which has created an interior that enchantingly blends historic beauty with modern comforts. The duplex comes with 2 covered parking spaces in the basement. A lovely **large ficus** adds a natural charm to the garden.

This historic port city of Málaga lies on the **Costa del Sol** coast, with its **enchanting beaches**, picturesque streets with cafes and **tapas bars**, monuments, museums, and a friendly atmosphere. There are direct flights from Prague to Málaga.

Floor area: 209 m²



* Area of the unit according to the Civil Code. The area consists of the sum total area of the entire unit bounded by perimeter walls.



Apartment Five-bedroom (6+kk)

€ 3 004 546 | CZK 76 000 000

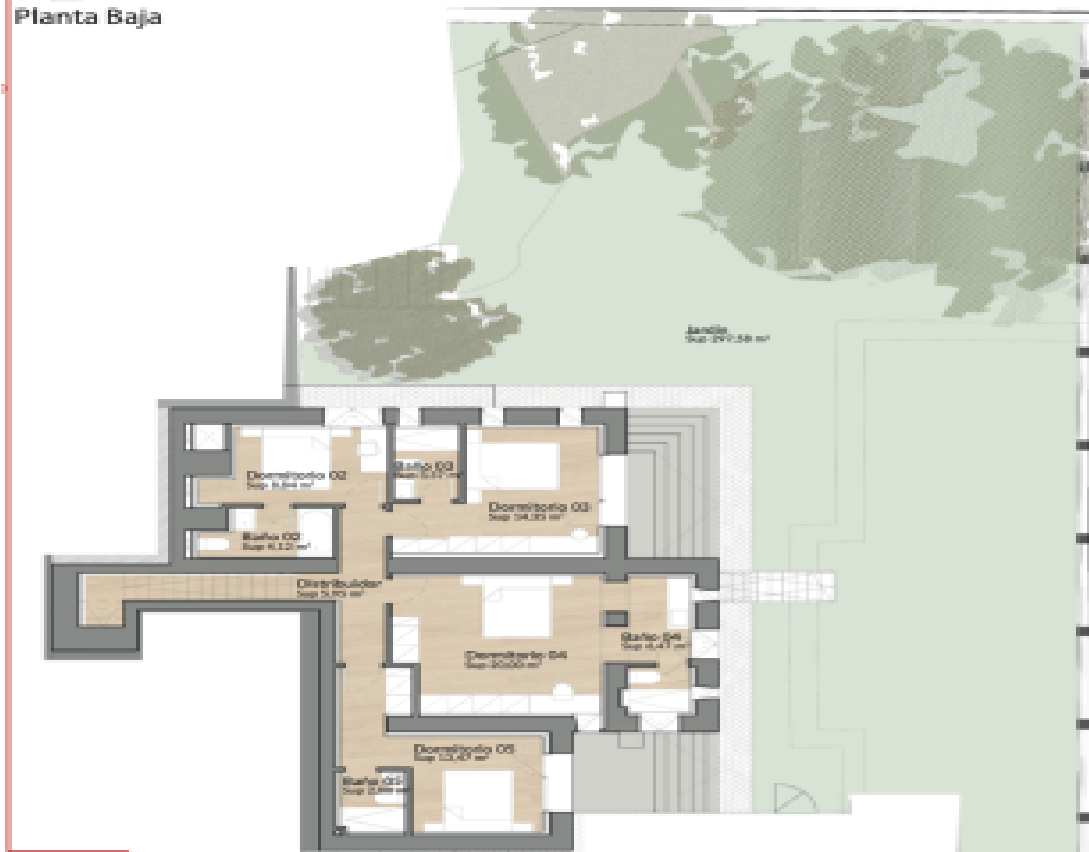
209 m², Málaga, Andalusia, Málaga

MONTE SANCHA, 14 DÚPLEX

Planta Alta



Planta Baja



Superficie útil de vivienda Decreto 218/2005	209,90 m ²
Superficie construida de vivienda Decreto 218/2005	311,59 m ²
<small>Superficie construida de vivienda Decreto 218/2005 en planta baja y en planta alta</small>	
Superficie útil cerrada de vivienda PI Baja	80,26 m ²
Superficie construida cerrada de vivienda PI Baja	122,49 m ²
Superficie útil cerrada de vivienda PI Alta	118,22 m ²
Superficie construida cerrada de vivienda PI Alta	148,28 m ²