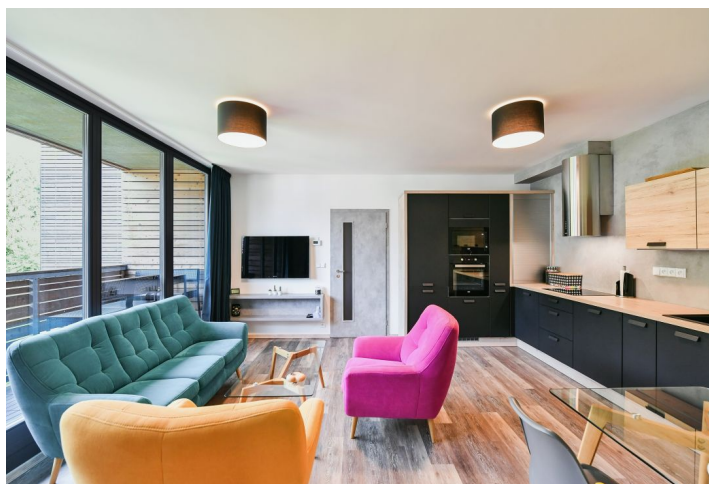




Apartment Two-bedroom (3+kk)

€ 361 260 | CZK 9 120 000

58.1 m², Jablonec nad Nisou, Harrachov





Apartment Two-bedroom (3+kk)

€ 361 260 | CZK 9 120 000

58.1 m², Jablonec nad Nisou, Harrachov

Total area	63 m ²
Floor area*	58 m ²
Loggia	5 m ²
Parking	Outdoor parking space
Cellar	2 m ²
PENB	B
Reference number	105119

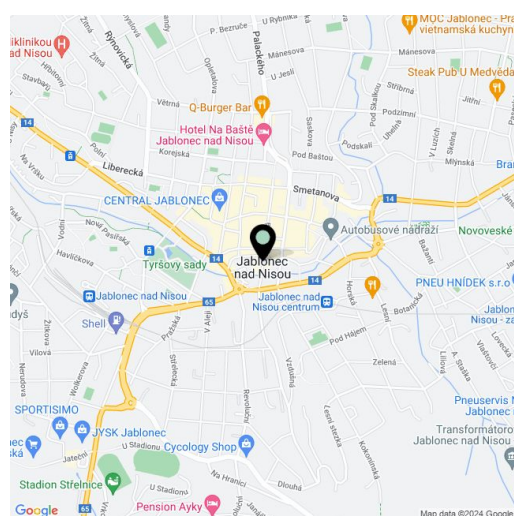
This mountain apartment with a loggia and parking space located on the 1st floor of a modern building with an elevator is situated on a nice sloping site on the edge of the Harrachov ski resort. In addition to a beautiful view of the surrounding landscape, it also offers quick access to a bike path, a cross-country trail, or a hiking trail leading to the popular Mumlava waterfalls.

The layout of the **fully equipped** apartment consists of a living room with a kitchen and west-facing **loggia**, 2 bedrooms, a bathroom with a shower, a separate toilet, and a foyer. The apartment also includes a storage room on the same floor, a **bicycle box** in the basement of the building, and an outdoor **parking space**. The building has its own manager.

The interior, in natural tones, is complemented by colorful solitaire pieces in the living room. The spacious **ORESİ** brand kitchen is equipped with Beco appliances and a **drinking water filter**, and other built-in furniture is located in the bedroom and hallway. Home comfort is completed by **heated floors, vinyl** in the living area, and large-format tiles in the bathrooms and in the hallway, while heating can be controlled remotely. The windows are **wooden triple-glazed**.

Harrachov is the perfect place for lovers of nature, entertainment, and sports, whether it's a bobsleigh track, a **ski area**, various sports grounds, fitness and wellness, or museums, restaurants, or cafes. Walks to the nearby **Mumlava Waterfalls** or Čertova Hora can be complemented by longer trips on cross-country skis or bikes along the peaks of the Krkonoše and Jizera mountains. Harrachov is easily accessible from Prague by highway, and the journey takes approximately an hour and a half.

Floor area 58.1 m², loggia 4.5 m², storage room 2.3 m², cyclobox 4.3 m².



* Area of the unit according to the Civil Code. The area consists of the sum total area of the entire unit bounded by perimeter walls.



Apartment Two-bedroom (3+kk)

€ 361 260 | CZK 9 120 000

58.1 m², Jablonec nad Nisou, Harrachov

plochy miestnosti		
OZNAČENÍ MÍSTNOSTI	NAZEV MÍSTNOSTI	PLOCHA [m ²]
2.2.1	ZADVERĚ	4.0
2.2.2	WC	2.1
2.2.3	KOUPELNA	3.1
2.2.4	POKOU + KK	23.8
2.2.5	POKOU	13.1
2.2.6	POKOU	9.3
	ČISTÁ PLOCHA MÍSTNOSTI	56.3

