



House Six-bedroom (7+1)

€ 2 701 845 | CZK 68 100 000

849 m², Solta, Split-Dalmatian





House Six-bedroom (7+1)

849 m², Solta, Split-Dalmatian

€ 2 701 845 | CZK 68 100 000

Total area	849 m ²
Plot	1 337 m ²
Floor area	481 m ²
Terrace	310 m ²
Parking	2 garage parking spaces + 1 space on the plot
Garage	58 m ²
Cellar	-
PENB	G
Reference number	105347

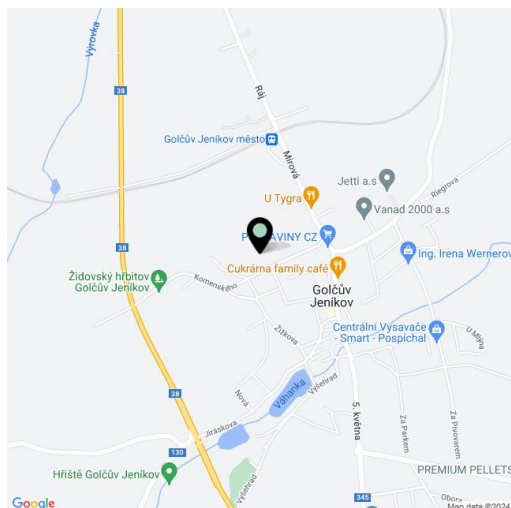
This exceptional residence, set in a picturesque bay on the island of Šolta, provides wonderful views of the sea and undisturbed living in the privacy of a unique resort. The minimalist interior, with an earth-toned color palette and unique materials such as wood and marble, is complemented by intelligent technologies and an energy-efficient system that meets the criterias of the most demanding users.

In the basement is a **garage for 2 cars** and utility rooms. On the ground floor, the entrance hall leads to the open space living room with a **bar**, dining room, and fully equipped kitchen. Upstairs are 4 bedrooms with en-suite bathrooms and direct access to **private terraces**. A gym with premium equipment, a sauna, and an outdoor **85 m² infinity pool** offer residents **maximum relaxation**.

The house is equipped with bespoke furniture, **Schüco Panorama** windows and doors, an **Otis elevator**, Atlas porcelain tiles, Scheucher **wooden floors**, Axor bathroom fittings, **KNX smart home system**, Samsung 3in1 heat pump, and Bosch appliances. The interior is decorated with **natural travertine stone**.

Pristine beaches with crystal clear water and a **great restaurant** using local ingredients are within walking distance of the villa. The island of Šolta has a ferry connection with Split, from where international lines fly to Prague.

Floor area of the house 393 m², terraces 310 m², garage 58 m², plot 1,337 m².

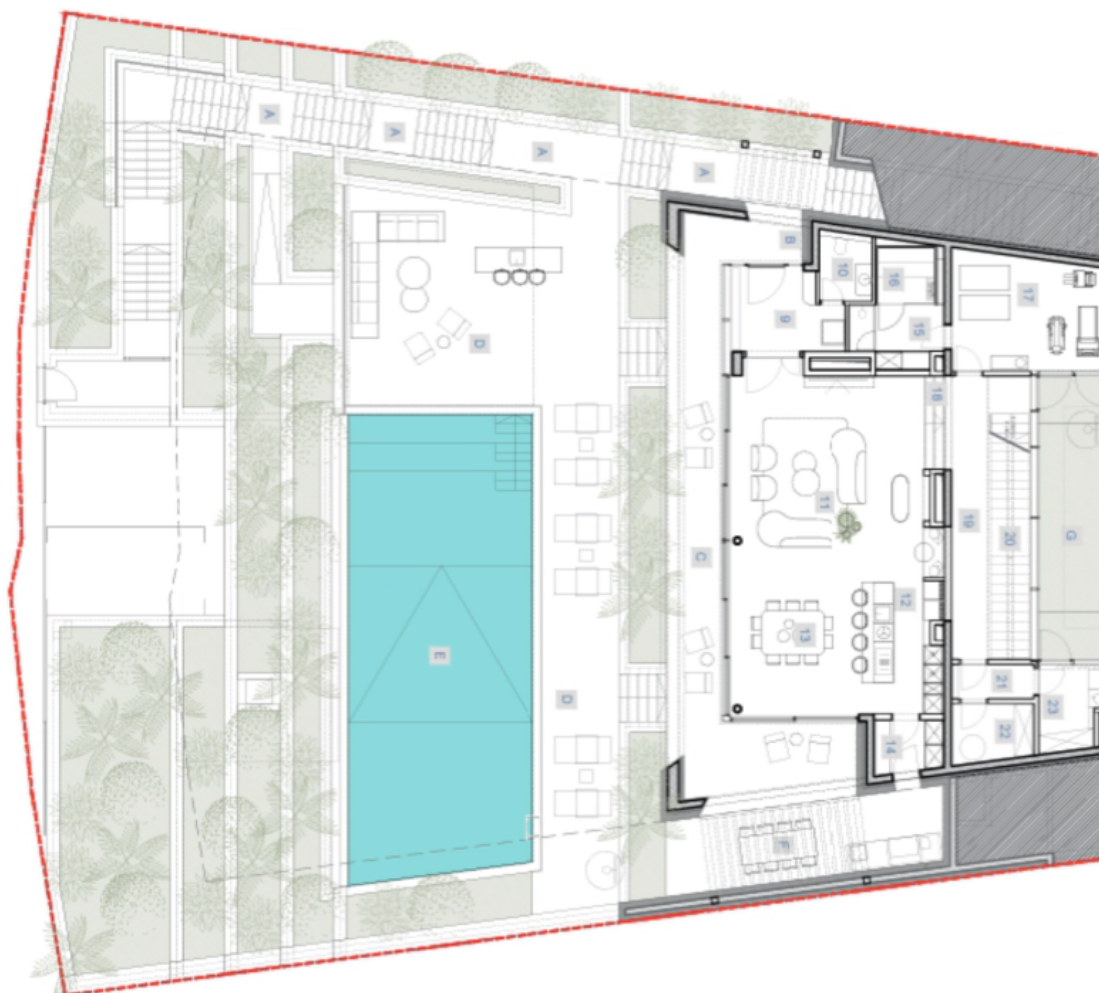




House Six-bedroom (7+1)

€ 2 701 845 | CZK 68 100 000

849 m², Solta, Split-Dalmatian



TOTAL OUTDOOR - 275,18 m²

- B-COVERED ENTRANCE - 4,33 m²
- C-COVERED TERRACE - 43,57 m²
- D-OPEN POOL TERRACE - 101,78 m²
- E-POOL AREA - 85,26 m²
- F-OUTDOOR KITCHEN AND DINING - 21,38 m²
- G-COVERED TERRACE - 9,48 m²
- H-OPEN TERRACE - 9,48 m²

OUTDOOR AREAS

TOTAL INDOOR - 133,36 m²

- 9-ENTRANCE - 8,66 m²
- 10-TOILET - 3,75 m²
- 11-LIVING ROOM AND BAR - 40,78 m²
- 12-KITCHEN - 13,57 m²
- 13-DINING - 17,65 m²
- 14-STORAGE - 3,67 m²
- 15-CHANGING - 5,54 m²
- 16-SAUNA - 4,29 m²
- 17-GYM - 17,64 m²
- 18-STAIRS 1 - 1,67 m²
- 19-HALL - 12,75 m²
- 20-STAIRS 2 - 9,77 m²
- 21-HALL 2 - 2,64 m²
- 22-UTILITY - 4,74 m²
- 23-HOUSEKEEPING - 5,44 m²

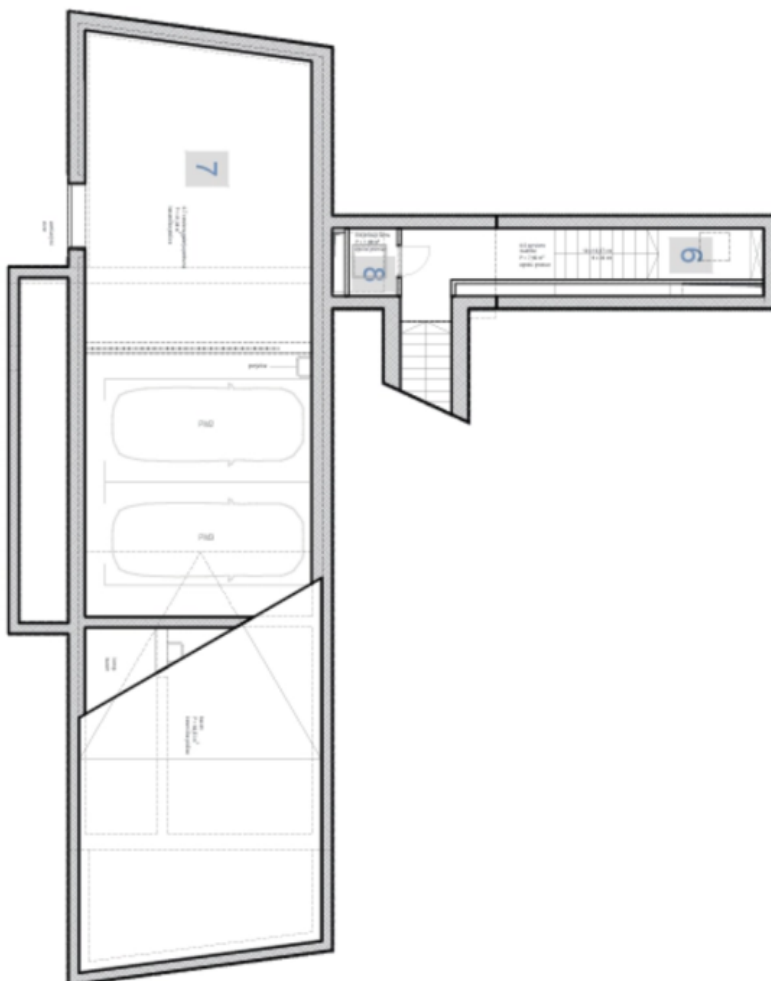
GROUND FLOOR



House Six-bedroom (7+1)

849 m², Solta, Split-Dalmatian

€ 2 701 845 | CZK 68 100 000



BASEMENT / GARAGE
GALLERY LEVEL

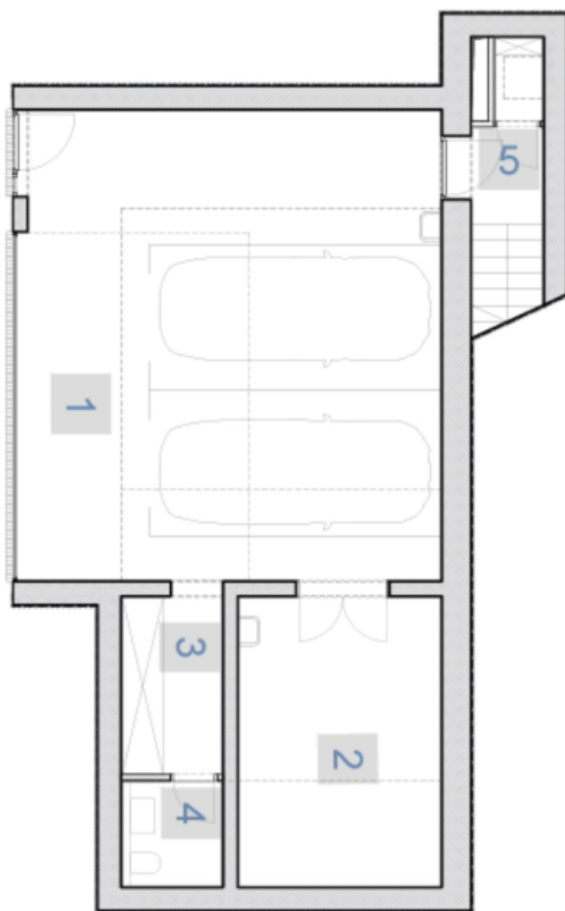
6 - TECHNICAL	1,18 m ²
7 - SERVICE BASEMENT GALLERY	39,25 m ²
8 - INSTALLATION SHAFT	1,89 m ²
TOTAL	- 42,32 m²



House Six-bedroom (7+1)

€ 2 701 845 | CZK 68 100 000

849 m², Solta, Split-Dalmatian



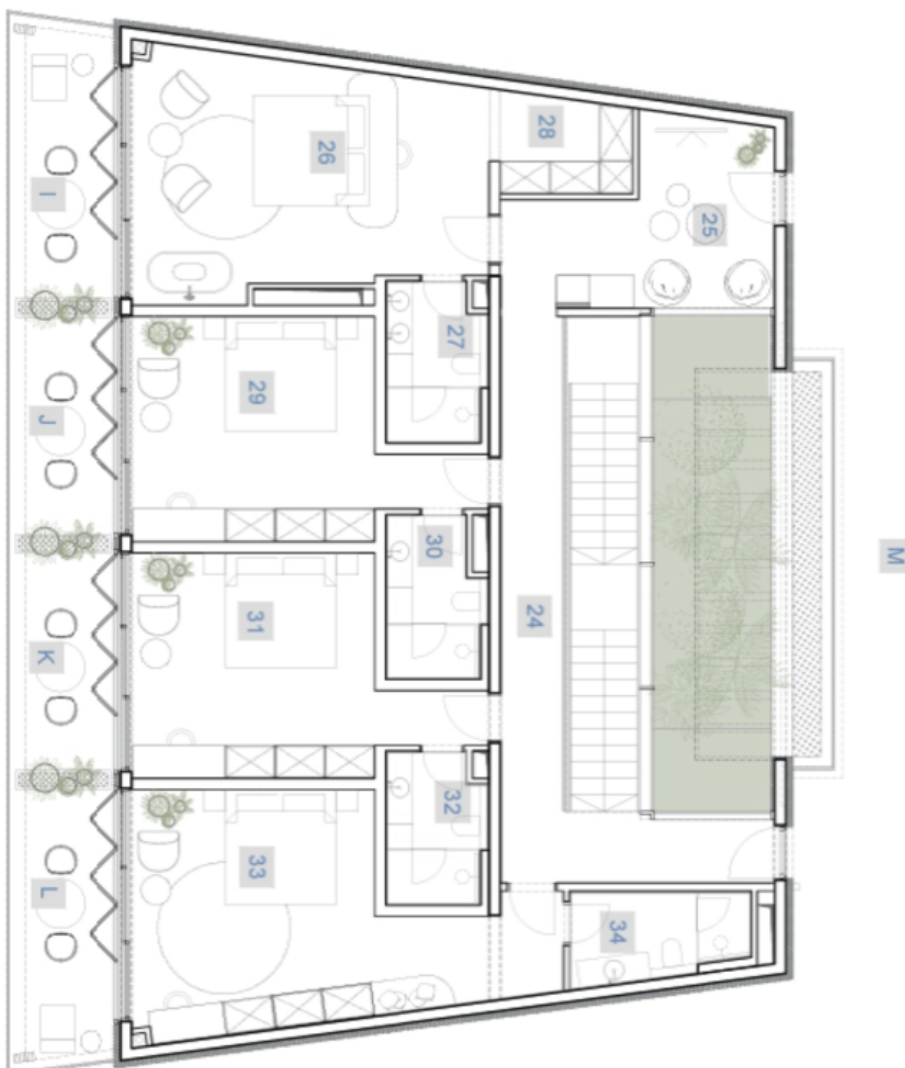
BASMENT / GARAGE LOWER LEVEL	
1 - GARAGE	58.12 m ²
2 - POOL, UTILITY ROOM	17.16 m ²
3 - STORAGE	5.20 m ²
4 - TOILET	3.08 m ²
5 - SERVICE STAIRS	25.74 m ²
TOTAL - 109.30 m ²	



House Six-bedroom (7+1)

€ 2 701 845 | CZK 68 100 000

849 m², Solta, Split-Dalmatian



1st FLOOR	
24 - HALLWAY	18,78 m²
25 - PLAY ROOM/LOUNGE	11,46 m²
26 - BEDROOM 1 (MASTER)	26,32 m²
27 - BATHROOM 1	5,03 m²
28 - WALK IN CLOSET	4,14 m²
29 - BEDROOM 2	20,05 m²
30 - BATHROOM 2	4,90 m²
31 - BEDROOM 3	20,28 m²
32 - BATHROOM 3	4,76 m²
33 - BEDROOM 4	25,49 m²
34 - BATHROOM 4	4,95 m²
TOTAL INDOOR - 146,16 m²	
I - BEDROOM 1 TERRACE	9,26 m²
J - BEDROOM 2 TERRACE	7,43 m²
K - BEDROOM 3 TERRACE	7,43 m²
L - BEDROOM 4 TERRACE	9,69 m²
M - BACK OPEN TERRACE	85,64 m²
TOTAL OUTDOOR - 119,85 m²	