



Apartment Three-bedroom (4+1)

Rented

129 m², Praha 6, Bubeneč, Gotthardská





Apartment Three-bedroom (4+1)

Rented

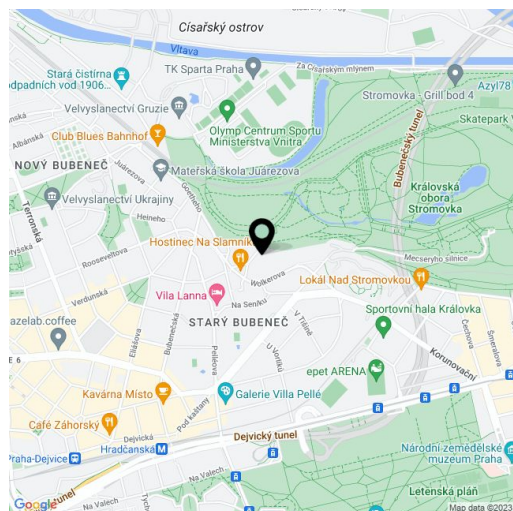
129 m², Praha 6, Bubeneč, Gotthardská

Total area	129 m ²
Parking	Parking is subject to availability.
Cellar	-
PENB	F
Reference number	10623
Available from	Immediately

Greatly benefiting from the location right next to the Stromovka Park, this is a fully newly renovated, fully furnished 3-bedroom 2-bathroom apartment on the second floor of a completely refurbished 19th century building with a new lift. Located in a quiet cul-de-sac in the prestigious embassy district of Bubeneč, a few min. walk to a bus stop, and a short walk to Hradčanská and Dejvická metro stations with full amenities in the immediate vicinity. Conveniently located for the international schools in Prague 6 and the airport.

The interior features a corner living room, a fully fitted kitchen, a master bedroom with an en-suite bathroom, two further bedrooms, a family bathroom, and an entrance hall. Both bathrooms include a bathtub, a sink, a toilet, and a bidet shower.

Built-in wardrobes in all bedrooms and the hall, solid wood parquet floors, tiles, security entry door, large windows, dishwasher, induction cooktop, microwave oven, gas boiler, satellite reception. Parking next to the building at CZK 3000/month (subject to availability). Deposit for service charges and water: CZK 2500/month. Electricity and gas will be transferred to the tenant.



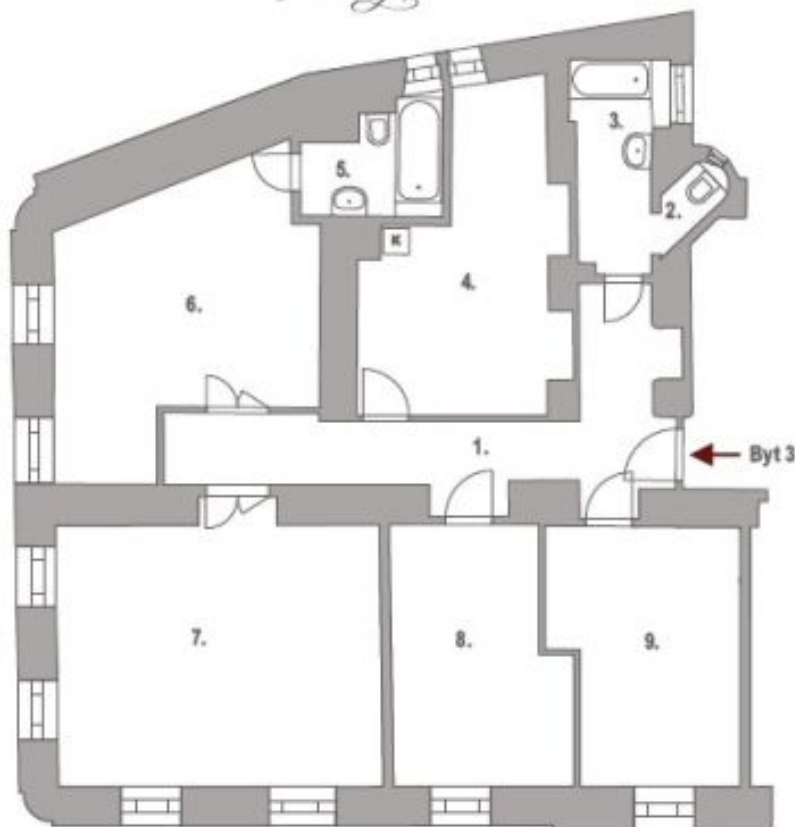
* Area of the unit according to the Civil Code. The area consists of the sum total area of the entire unit bounded by perimeter walls.



Apartment Three-bedroom (4+1)

129 m², Praha 6, Bubeneč, Gotthardská

Rented



2.PATRO



BYT 3 4+1



Byt 3	3.NP
1. chodba	15,1 m ²
2. WC	1,0 m ²
3. koupelna	5,0 m ²
4. kuchyň	15,2 m ²
5. koupelna	3,9 m ²
6. pokoj	20,7 m ²
7. obýv.pokoj s jídelnou	26,9 m ²
8. pokoj	13,1 m ²
9. pokoj	14,1 m ²
Celková užitná plocha bytu	115,0 m²
Celková podlahová plocha	129,4m²