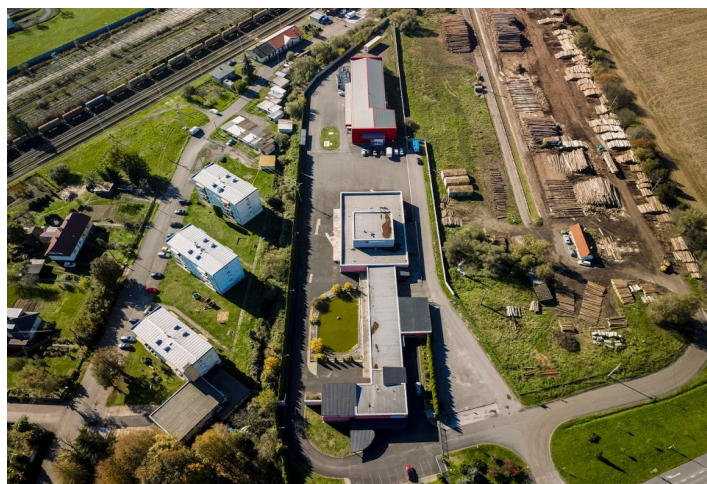




# Industrial park

13 061 m<sup>2</sup>, Vígfaš, Detva

Ask for price





## Industrial park

13 061 m<sup>2</sup>, Vígľaš, Detva[Ask for price](#)

Total area	13 061 m <sup>2</sup>
Ceiling height	—
Floor loading capacity	—
Column grid structure	—
Structure	—
PENB	B
Reference number	106474

**Industrial complex for sale consisting of three parts is located in Vígľaša in the Banská Bystrica region and stands on a plot of 13 061 m<sup>2</sup>. The building was renovated in 2011, is insulated and ready for immediate operation.**

The production-operational area was approved in 2005 and reconstructed in 2011. The total floor area is **2 894 m<sup>2</sup>**. The building is divided into three parts with separate entrances.

**Front part:**

Commercial premises on the ground floor (130 m<sup>2</sup>)

Service 4-room apartment on the first floor (450 m<sup>2</sup>, kitchen, bathroom, toilet, underfloor heating)

**Middle part:**

Office space (150 sqm), hall (152 sqm)

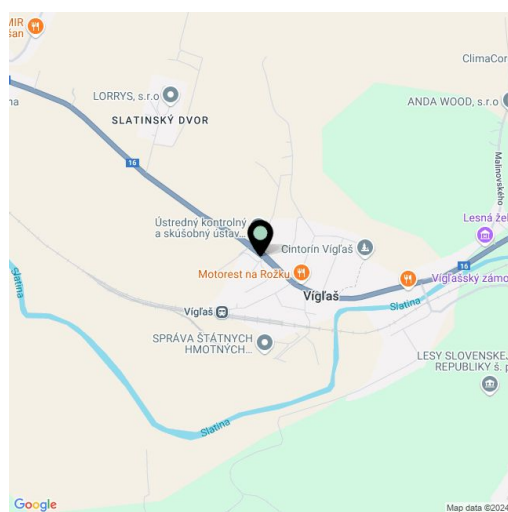
**Rear part:**

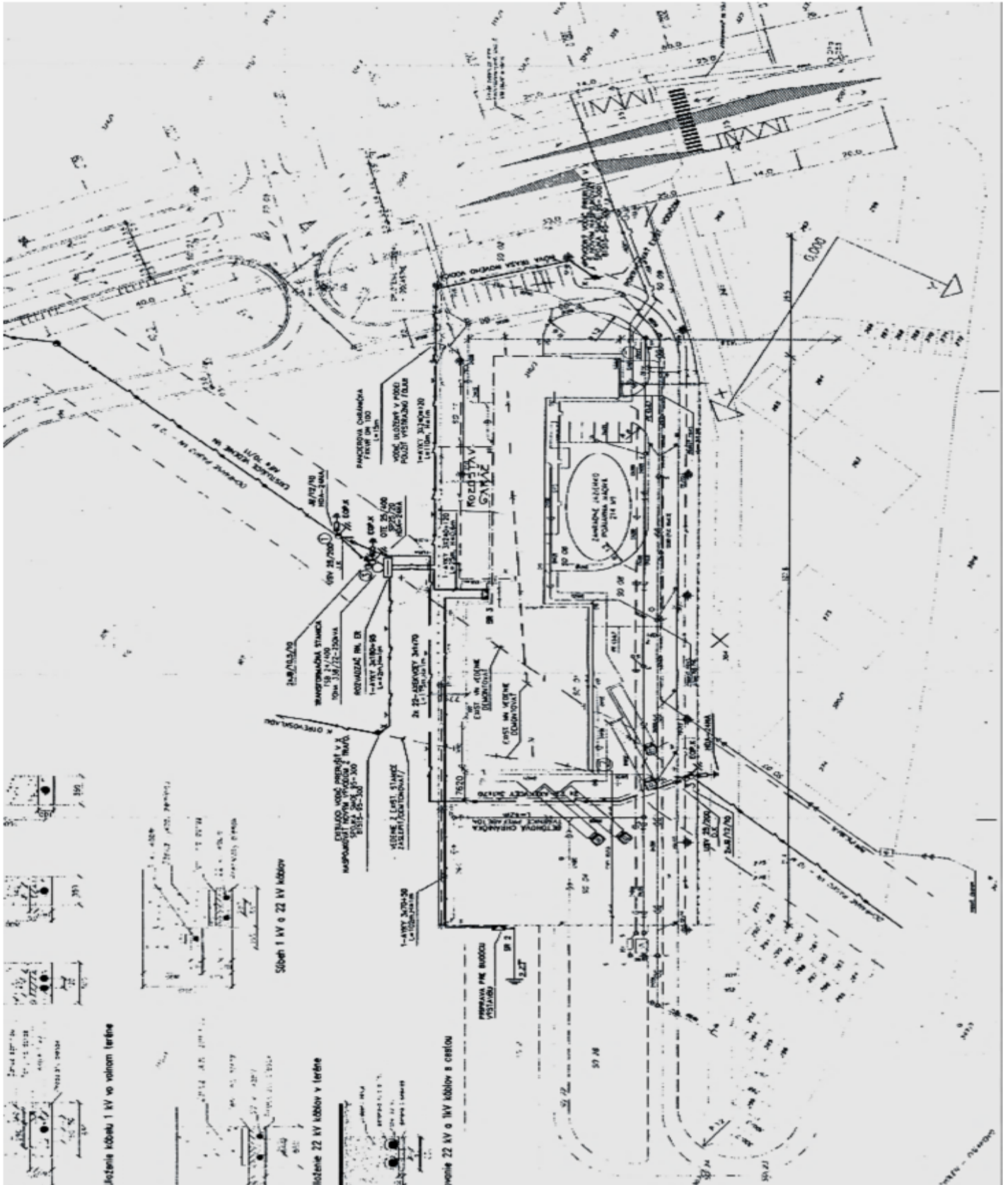
Production premises with facilities (**800 m<sup>2</sup>**), boiler room (3x Buderus gas boiler). The production area has tiled walls, several loading ramps, refrigeration, air conditioning and ventilation. The premises are suitable for the production and storage of food. Ceiling height 2,4 m. Possibility of extension, superstructure or raising the ceiling.

The premises are enclosed by a **concrete fence** and have an automatic sliding gate. **Security cameras**, alarm, security service. Each building has its own connection to utilities (gas pipeline, sewerage, public water supply + own well, electricity - own transformer station). Doors and windows are plastic with double glazing. In the area there is an artificial pond with a fountain. Outside parking has capacity for 25 cars.

The industrial complex is located less than a kilometer from the center of the village Vígľaš, which lies on the route Zvolen - Detva - Košice, about 15 km from the district town of Zvolen and 10 km from the town of Detva. Access to the property is by paved road. Complete amenities within easy reach.

Land plot 13 061 m<sup>2</sup>.



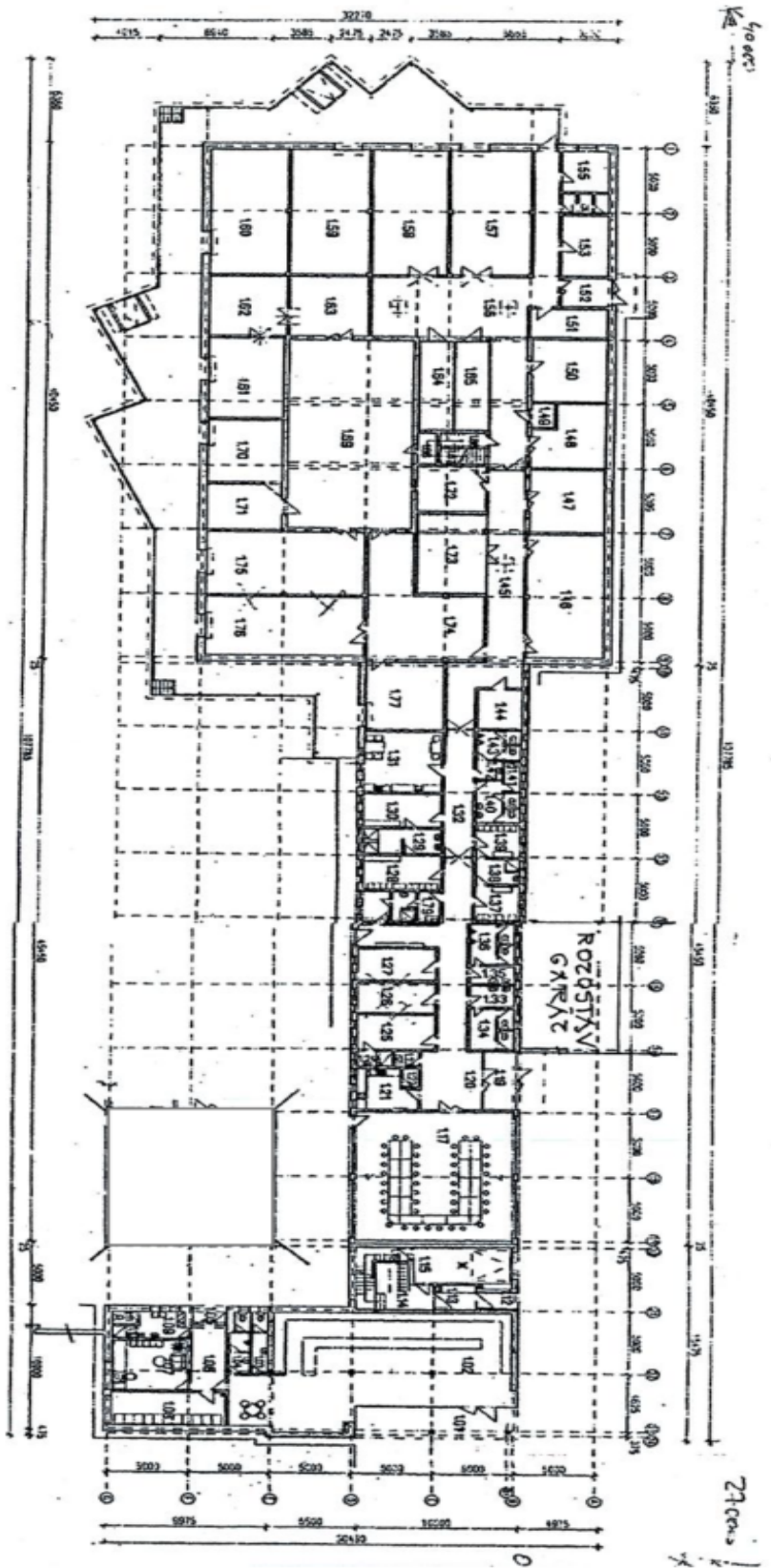
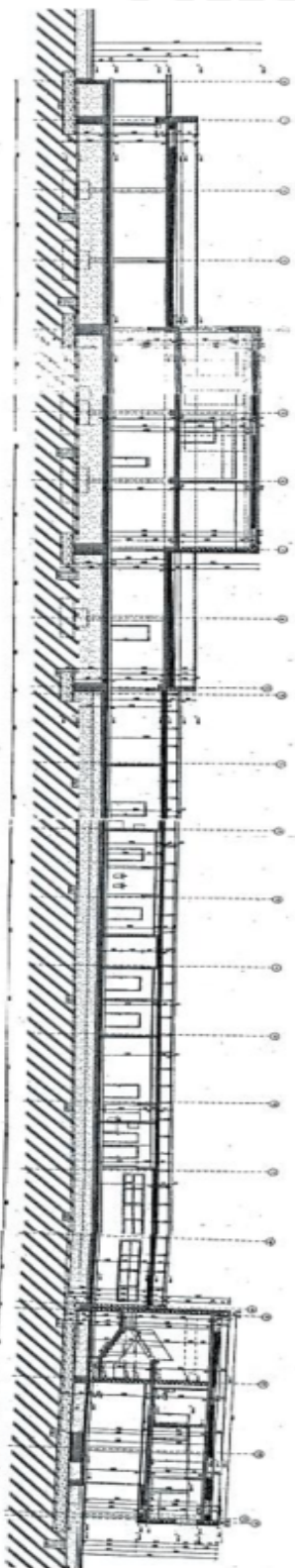


SITUÁCIA



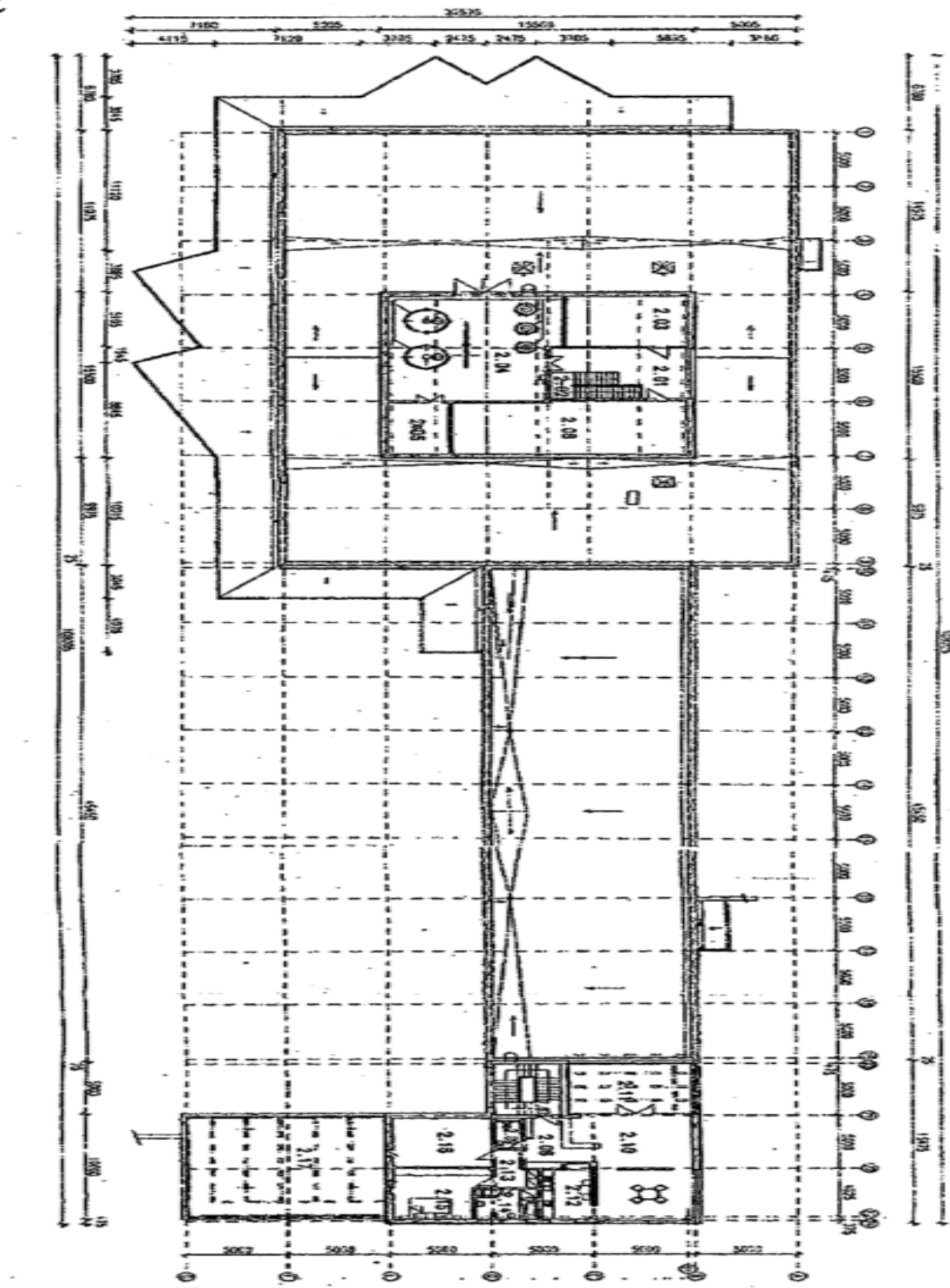
REZ B-B

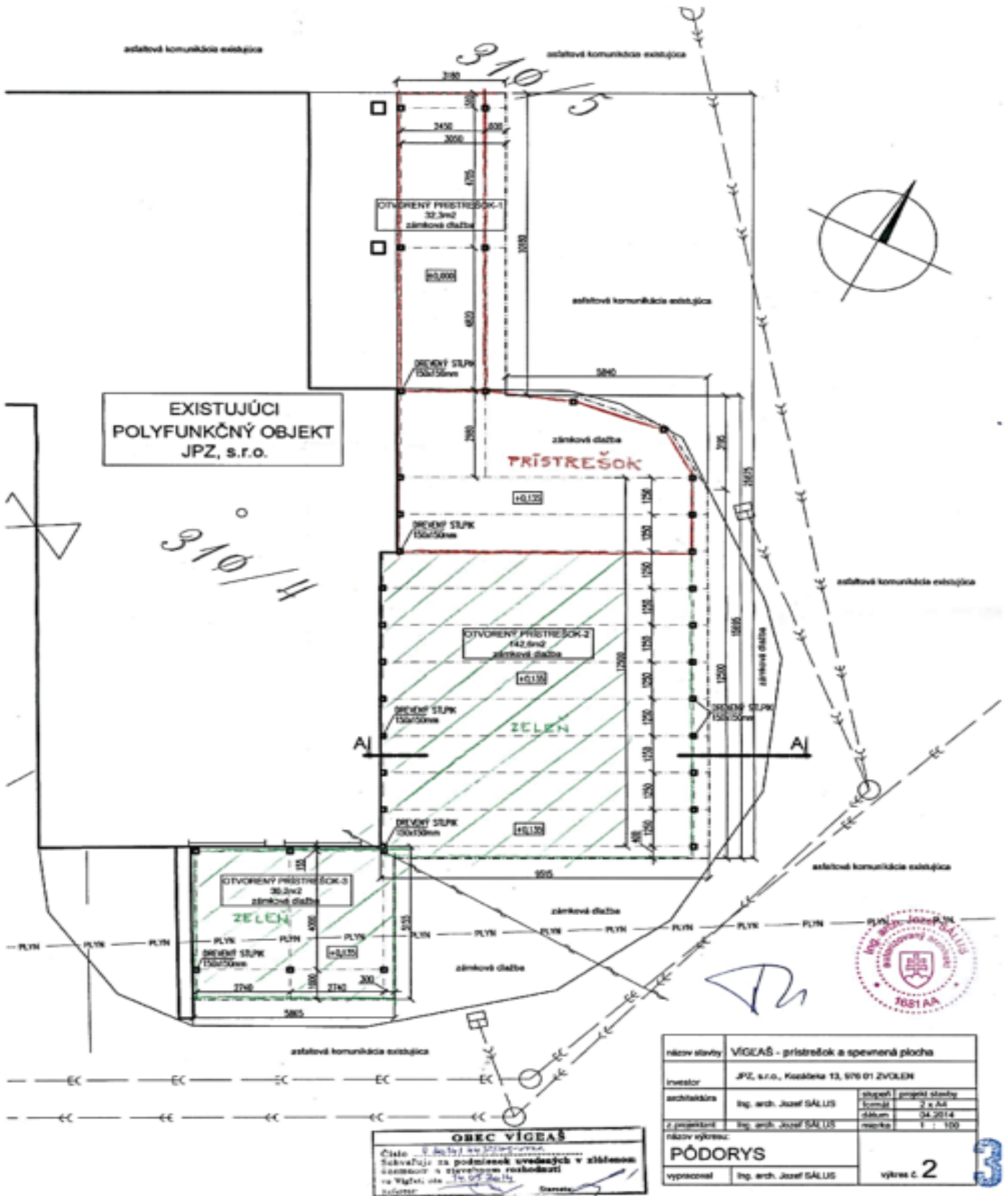
1.NP





2.NP

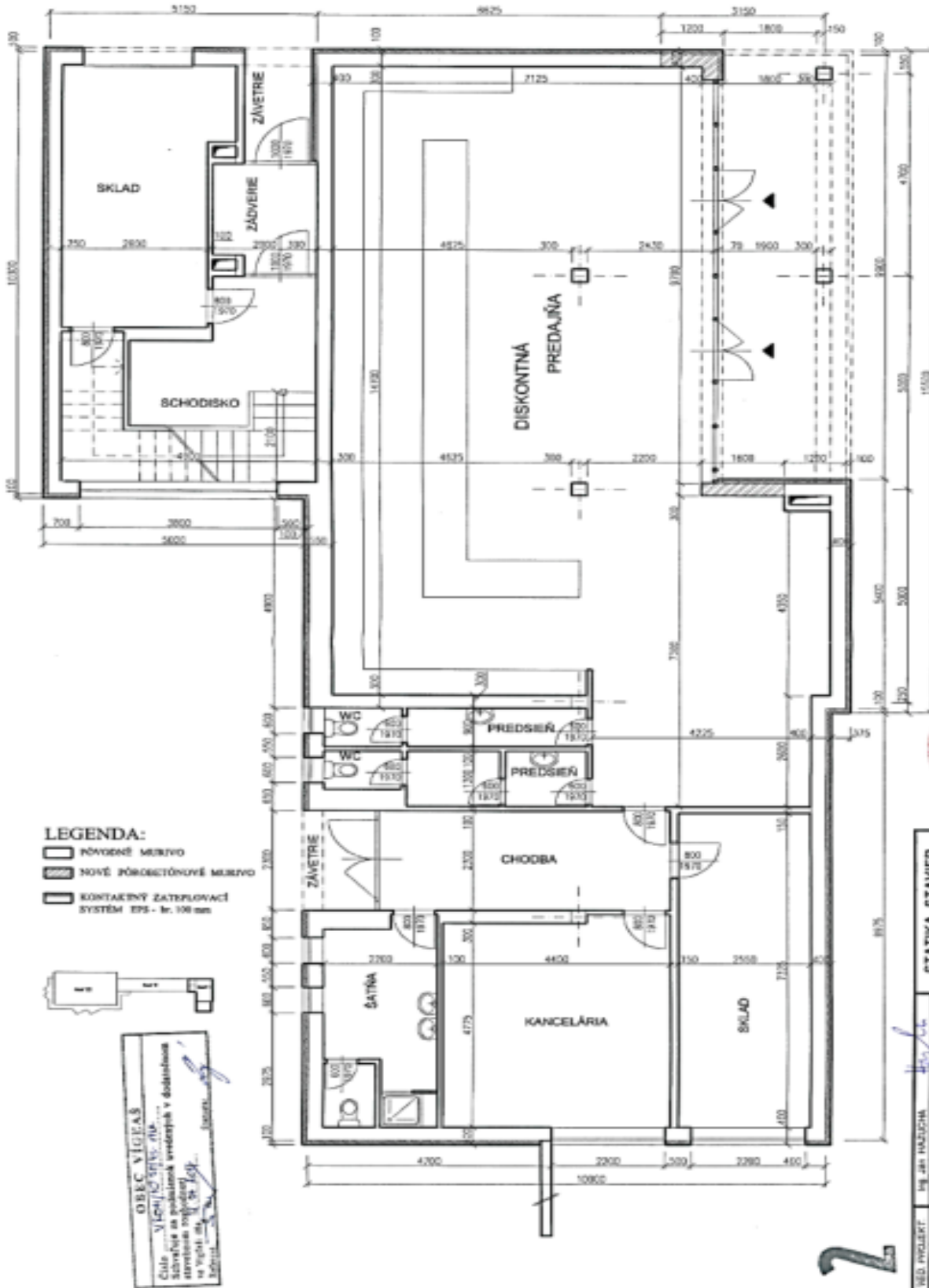




**PREDAJŇA - PRÍSTREŠOK**

názov stavby	VÍGLEŠ - prístrešok a spevnená plocha		
investor	JPZ, s.r.o., Kezleňská 13, 976 01 ZVOLEN		
architektúra	Ing. arch. Jozef SÁLUS	objekt	projekt stavby
		formát	A4
		datum	04.2014
z. projektant	Ing. arch. Jozef SÁLUS	listov	1 - 100
názov výkresu	<b>PÓDORYS</b>		
vypracoval	Ing. arch. Jozef SÁLUS	výkres č.	<b>2</b>

**OBEC VÍGLEŠ**  
Číslo: 4/2014/22  
Schvaľuje sa na podmienkach uvedených v zmluve  
o zmluvu a stavebných rozhodnutiach  
na Vígľaši, dňa 12.01.2014  
Starosta: \_\_\_\_\_



<b>LEGENDA:</b> PŮVODNÉ MESTRO NOVÉ PŮBORNÉ MESTRO KONTAKTNÝ ZATLAKOVACÍ SYSTÉM EPS - hr. 100 mm	<b>STATIKA STAVIEB</b> Ing. Ján HAZUČKA V. P. TOSKA 217, 960 01 ZVOLEN tel. & fax: 0461 533 59 82 e-mail: hrazuka@stava.sk
ORBEC VÍGLAŠ Číslo VÍGLAŠ 01/STV/11/11 Súčasťou sú posudzované zmeny a doplnenia stavebného konštrukčného systému a Víglaš 01/STV/11/11	DATUM 11/2015 STUPEŇ PRŮJEM PRŮJEM MĚRKA 1:1
VED. PRŮJEMT Ing. Ján HAZUČKA ZODP. PRŮJEMT Ing. Ján HAZUČKA PŘIPRAVOVATEL Ing. Kvetoslava ČERNÁKOVÁ INVESTOR ALADAR S.R.O. J. KODÁČKA 8.13 960 01 ZVOLEN	STAVBEBNÉ ÚPRAVY & PRÍSTAVBA GARÁŽE k objektu nap. č. 381A VÍGLAŠ
PŮBORNÝ PRŮJEM - samostatný list	MĚRKA č. 7

**PREDAJŇA 1.NP**