



Apartment Two-bedroom (3+kk)

€ 916 605 | CZK 23 038 866

98.37 m², Brno-město, Pisárky, Nad Pisárkami





Apartment Two-bedroom (3+kk)

€ 916 605 | CZK 23 038 866

98.37 m², Brno-město, Pisárky, Nad Pisárkami

Total area	119 m ²
Floor area*	98 m ²
Balcony	21 m ²
Parking	Possibility to purchase a parking space
Garage	Yes
Cellar	5 m ²
PENB	B
Reference number	106643

This premium bright and spacious apartment with a large balcony is part of the top-class Nová Myslivna residence with a reception, swimming pool, saunas, fitness zone, and rooftop restaurant. The project is located in a beautiful area in the middle of the forest park above Pisárky Valley.

The layout of the apartment consists of a living room with a preparation for a kitchen, a master bedroom, another bedroom, a central bathroom, a separate toilet, **a walk-in wardrobe**, a hall, and a foyer. All rooms have access to the **balcony with beautiful views**.

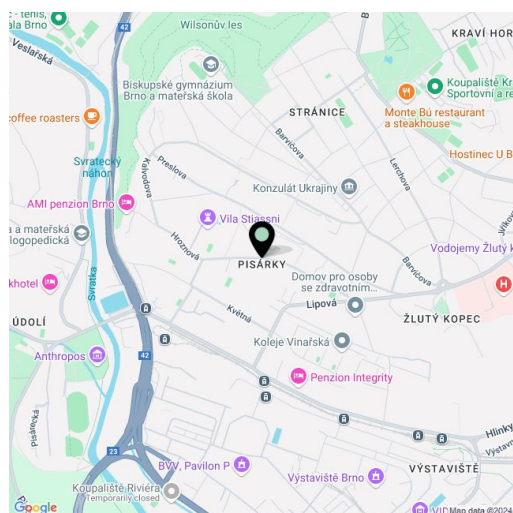
The high-standard facilities include **wooden floors made of oiled oak**, 2.1 m high rebateless doors, aluminum windows with insulating triple glazing and electrically controlled **exterior blinds**, **a premium kitchen fully equipped with appliances**, large-format ceramic floor and wall tiles, brand-name sanitary ware and faucets, and **a smart home system** controlling, among other things, **cooling, and underfloor heating**. **The purchase price includes a cellar storage cubicle. It is possible to purchase a garage or outdoor parking space.** The building uses modern sustainable technologies to reduce energy consumption (heat pumps, photovoltaic panels). Other benefits include a daytime **reception, a relaxation zone with a swimming pool, several saunas and a gym**, a stroller room, or a room for washing bikes or dogs.

The apartment building will be surrounded by **greenery with water features and landscaping**, which will naturally connect to the surrounding forest, perfect for walks or bike rides. A restaurant with impressive views of the city and the wine-growing Pálava region, 50 kilometers away, is directly in the building. There is a bus stop not far from the house, from where you can reach the city center in about 15 minutes, **Campus Square shopping center** is about 5 minutes away by car or bus.

Floor area 98.37 m², balcony 20.88 m², cellar 5.46 m².

Expected completion date is summer 2026.

For more information, please visit the project website www.novamyslivna.com.



* Area of the unit according to the Civil Code. The area consists of the sum total area of the entire unit bounded by perimeter walls.



Apartment Two-bedroom (3+kk)

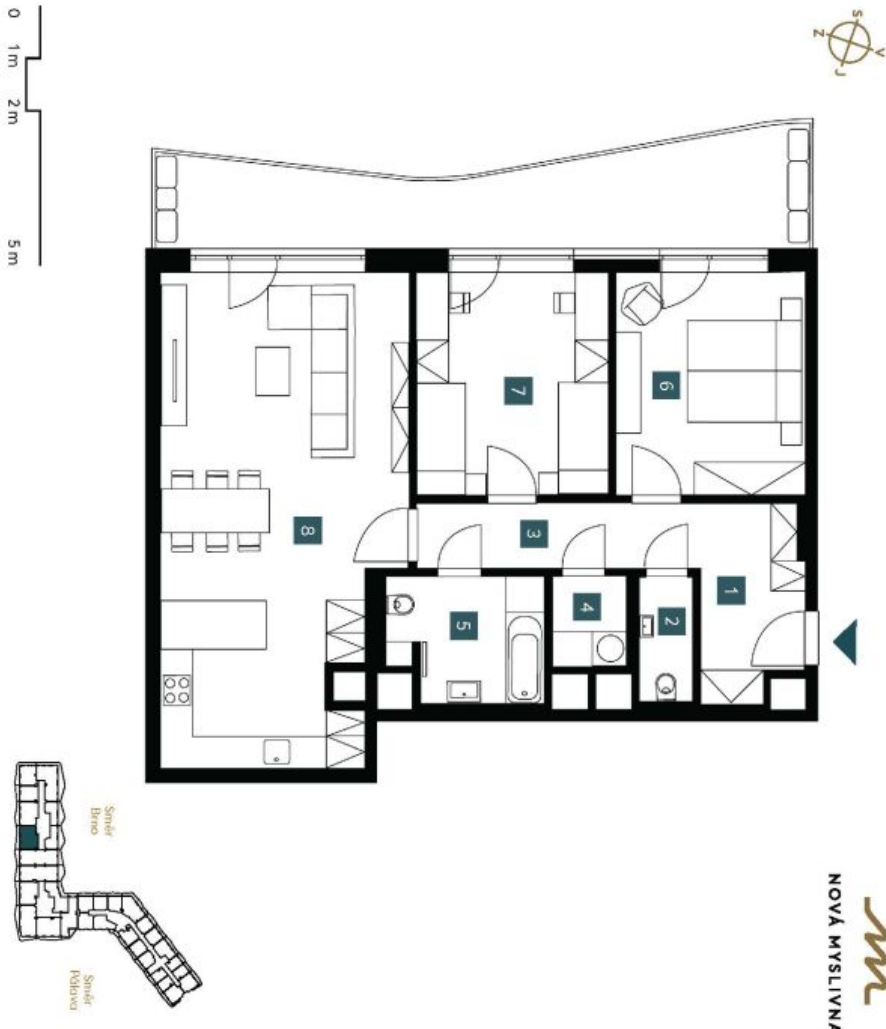
€ 916 605 | CZK 23 038 866

98.37 m², Brno-město, Pisárky, Nad Pisárkami

2.5.06	
3. NP 3 + KK	
2nd floor 2 bdr/m	
1	Předstřih Hallway
2	WC WC
3	Chodba Hall
4	Šatna Dressing room
5	Koupelna + WC Bathroom + WC
6	Ložnice Bedroom
7	Pokoj Room
8	Obývací pokoj + KK Living room + Kitchen
Užitná plocha Usable area	
89,09 m²	
Podlahová plocha Floor area	
98,37 m²	
Balkón Balcony	
20,88 m²	
Celková plocha Total area	
119,25 m²	
EK KL UŽIVNÍ ZASTOUPENÍ svoboda&williams CHRISTIE'S INTERNATIONAL REAL ESTATE	

Popis: Bydlení bezúhonného náhledu (pauza orientací). Vybavení (nábytek, vchodová a dveřní sada, kuchyňská linka, lednička, pračka, a další) není součástí dovozu. K dispozici je speciální parkovací místo. Správné nastavení a vyřízení jsou speciálně vyžadovány ve stávajícím prostředí. Ušetřte si peníze. Smlouva o budoucí kupní smlouvě. Ověřte si všechny údaje před tím, než se vrátíte.

Note: The price of the individual items are only indicative. The facilities provided in the floor plan (furniture, kitchen, electrical appliances, etc.) are not included. The delivery, design, specification, final inspection, and equipment are specified in the contract of completion, which is part of the addendum to this sales purchase contract. Apartment's gross dimension listed in mm (rounded without postings).



NOVÁ MYSLIVNA