



## Apartment One-bedroom (2+kk)

€ 545 238 | CZK 13 682 753

61.51 m<sup>2</sup>, Brno-město, Pisárky, Nad Pisárkami





## Apartment One-bedroom (2+kk)

€ 545 238 | CZK 13 682 753

61.51 m<sup>2</sup>, Brno-město, Pisárky, Nad Pisárkami

Total area	76 m <sup>2</sup>
Floor area*	62 m <sup>2</sup>
Balcony	14 m <sup>2</sup>
Parking	Possibility to purchase a parking space
Garage	Yes
Cellar	2 m <sup>2</sup>
PENB	B
Reference number	106648

**This premium bright and spacious apartment with a large balcony is part of the top-class Nová Myslivna residence with a reception, swimming pool, saunas, fitness zone, and rooftop restaurant. The project is located in a beautiful area in the middle of the forest park above Pisárky Valley.**

The layout of the apartment consists of a living room with a preparation for a kitchen, a bedroom, a bathroom, and a foyer. All rooms have access to the **balcony with beautiful views.**

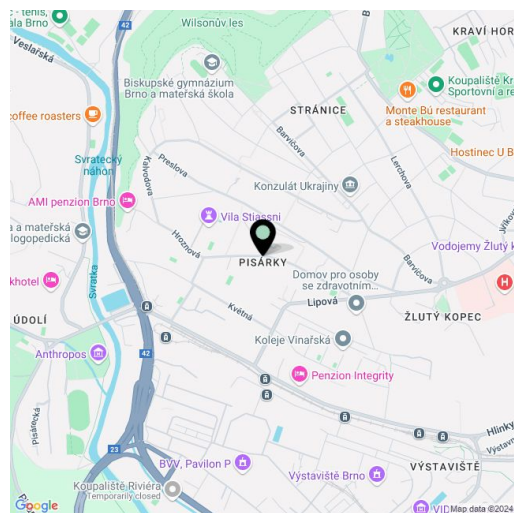
The high-standard facilities include **wooden floors made of oiled oak**, 2.1 m high rebateless doors, aluminum windows with insulating triple glazing and electrically controlled **exterior blinds**, a premium **kitchen fully equipped with appliances**, large-format ceramic floor and wall tiles, brand-name sanitary ware and faucets, and a **smart home system** controlling, among other things, **cooling, and underfloor heating. The purchase price includes a cellar storage cubicle. It is possible to purchase a garage or outdoor parking space.** The building uses modern sustainable technologies to reduce energy consumption (heat pumps, photovoltaic panels). Other benefits include a daytime **reception, a relaxation zone with a swimming pool, several saunas and a gym**, a stroller room, or a room for washing bikes or dogs.

The apartment building will be surrounded by **greenery with water features and landscaping**, which will naturally connect to the surrounding forest, perfect for walks or bike rides. A restaurant with impressive views of the city and the wine-growing Pálava region, 50 kilometers away, is directly in the building. There is a bus stop not far from the house, from where you can reach the city center in about 15 minutes, **Campus Square shopping center** is about 5 minutes away by car or bus.

Floor area 61.51 m<sup>2</sup>, balcony 14.19 m<sup>2</sup>, cellar 1.69 m<sup>2</sup>.

Expected completion date is summer 2026.

For more information, please visit the project website [www.novamyslivna.com](http://www.novamyslivna.com).



\* Area of the unit according to the Civil Code. The area consists of the sum total area of the entire unit bounded by perimeter walls.



# Apartment One-bedroom (2+kk)

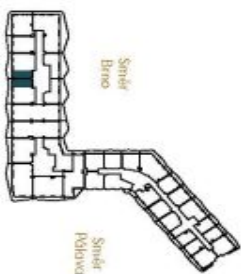
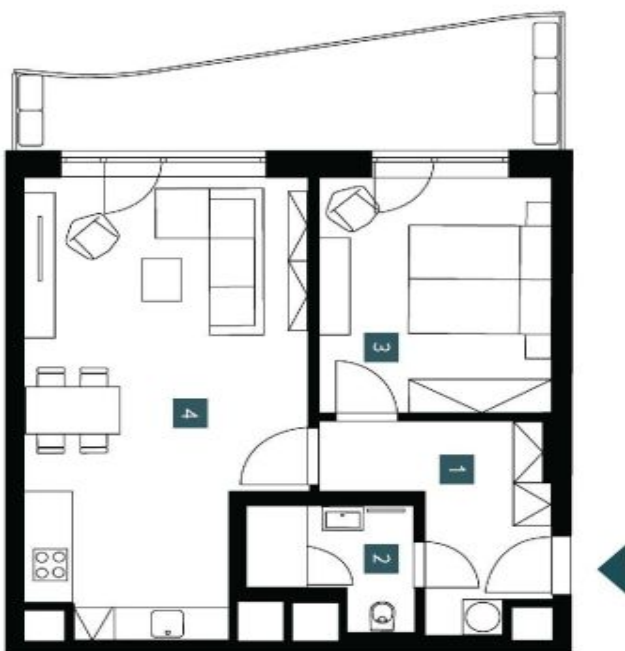
€ 545 238 | CZK 13 682 753

61.51 m<sup>2</sup>, Brno-město, Pisárky, Nad Pisárkami

<b>2. NP   2 + kk</b>	
1st floor	1 bdrm
<b>2.2.07</b>	
1	Předstíh s pračkou Hallway with washing machine
2	Koupelna + WC Bedroom + WC
3	Ložnice Bedroom
4	Obývací pokoj + KK Living room + kitchen
Užitná plocha Usable area	55,72 m <sup>2</sup>
Podlahová plocha Floor area	61,51 m <sup>2</sup>
Balkón Balcony	14,19 m <sup>2</sup>
Celková plocha Total area	75,70 m <sup>2</sup>

EXKLUZIVNÍ ZASTOUPENÍ

svoboda&williams | CHRISTIE'S  
INTERNATIONAL REAL ESTATE



NOVÁ MYSLIVNA

Pozemní plocha: Plocha jednotlivých místností (four rooms orientation). Vybavení: zařízení (kuchyňský nábytek, lednička, mikrovlnka, elektrická spotřebiče, atd.) není součástí nabídky. Pozemní plocha: Plocha jednotlivých místností (room orientation) or optional floor plan (optional) or optional floor plan (optional). Plocha jednotlivých místností (room orientation) or optional floor plan (optional) or optional floor plan (optional).  
Směd Brno: Plocha jednotlivých místností (room orientation) or optional floor plan (optional) or optional floor plan (optional).  
Směd Brno: Plocha jednotlivých místností (room orientation) or optional floor plan (optional) or optional floor plan (optional).  
Note: The areas of the individual rooms are only indicative. The facilities (furniture, kitchen, kitchen, electrical appliances, etc.) are not included. The delivery, design specifications, floor surfaces, and equipment are specified in the standard specification, which is part of the addendum to the future purchase contract. Appropriate gradation is used in mm (raster) without post-fixing.

