



Apartment One-bedroom (2+kk)

€ 530 963 | CZK 13 324 524

57.81 m², Brno-město, Pisárky, Nad Pisárkami





Apartment One-bedroom (2+kk)

€ 530 963 | CZK 13 324 524

57.81 m², Brno-město, Pisárky, Nad Pisárkami

Total area	81 m ²
Floor area*	58 m ²
Balcony	23 m ²
Parking	Possibility to purchase a parking space
Garage	Yes
Cellar	2 m ²
PENB	B
Reference number	106663

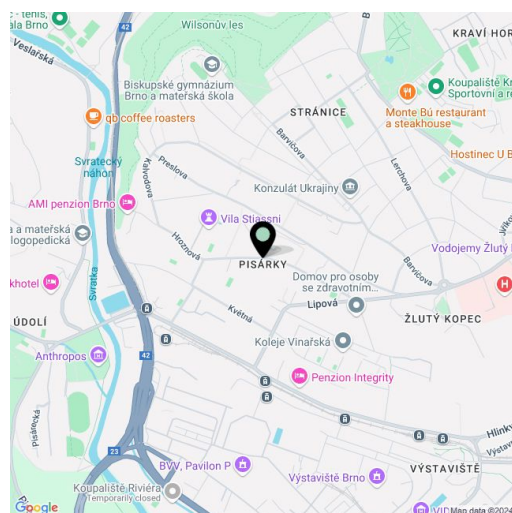
This southwest-facing apartment with a balcony and views of the Pálava wine-growing region is located on the 1st floor of the premium Nová Myslivna residence. This new building will become part of the forest park above Pisárky Valley, and the center of Brno will be only a few minutes' drive away. The residential project will offer its residents comfortable high-standard living, parking, a reception, a wellness and fitness zone, and a garden in the courtyard.

The layout consists of a living room with an adjoining kitchen, a bedroom, a bathroom (with a shower), a separate toilet, and an entrance hall. All rooms have access to the **balcony with beautiful views**.

The high-standard facilities include **wooden floors** made of oiled oak, 2.1 m high rebateless doors, aluminum windows with insulating triple glazing and electrically controlled **exterior blinds**, a **premium kitchen fully equipped with appliances**, large-format ceramic floor and wall tiles, brand-name sanitary ware and faucets, and a smart home system controlling, among other things, cooling, and underfloor heating. The purchase price includes a cellar storage cubicle. It is possible to purchase a **garage or outdoor parking space**. The building uses sustainable technologies to reduce energy consumption (heat pumps, photovoltaic panels). Other benefits include an **elevator**, daytime **reception**, a relaxation zone with a **swimming pool**, several **saunas and a gym**, a stroller room, or a room for washing bikes or dogs.

The apartment building will be surrounded by **greenery with water features and landscaping**, which will naturally connect to the **surrounding forest**. A restaurant with impressive views of the city and the wine-growing Pálava region, 50 kilometers away, is directly in the building. There is a bus stop not far from the house, from where you can reach the city center in about 15 minutes, **Campus Square shopping center** is about 5 minutes away by car or bus.

Floor area 57.81 m², balcony 22.73 m², cellar 1.61 m².



* Area of the unit according to the Civil Code. The area consists of the sum total area of the entire unit bounded by perimeter walls.



Apartment One-bedroom (2+kk)

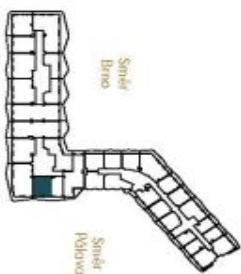
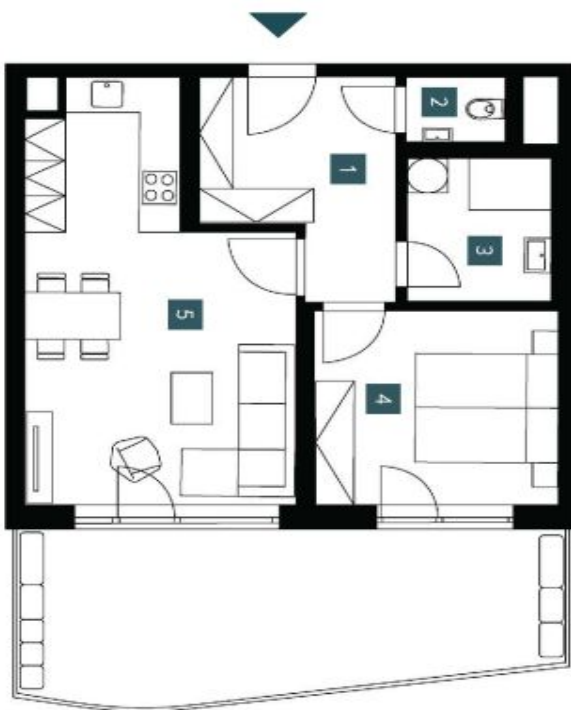
€ 530 963 | CZK 13 324 524

57.81 m², Brno-město, Pisárky, Nad Pisárkami

2.2.18	
2. NP 2 + kk	
1st floor	1 bdrm
1 Předstih Hallway	8,99 m ²
2 WC WC	1,54 m ²
3 Koupelna Bathroom	5,18 m ²
4 Ložnice Bedroom	11,86 m ²
5 Obývací pokoj + KK Living room + kitchen	24,17 m ²
Užitná plocha Usable area	51,74 m ²
Podlahová plocha Floor area	57,81 m ²
Balkon Balcony	22,73 m ²
Celková plocha Total area	80,54 m ²

EXKLUZIVNÍ ZASTOUPENÍ

svoboda&williams | CHRISTIE'S
INTERNATIONAL REAL ESTATE



NOVÁ MYSLIVNA
m

Pozemní plocha: Plocha jednotlivých místností (four private rooms), výhledem z celkové výměry (view from total area), elektrická a vodotěsná, a další nové vybavení (electrical and waterproofing, and other new equipment).
 Podlahová plocha: Plocha jednotlivých místností (individual private rooms), výhledem z celkové výměry (view from total area), elektrická a vodotěsná, a další nové vybavení (electrical and waterproofing, and other new equipment).
 Celková plocha: Plocha jednotlivých místností (individual private rooms), výhledem z celkové výměry (view from total area), elektrická a vodotěsná, a další nové vybavení (electrical and waterproofing, and other new equipment).
 Note: The areas of the individual rooms are only indicative. The facilities provided in the floor plan (furniture, kitchen, electrical appliances, etc.) are not included. The delivery, design specifications, floor surfaces, and equipment are specified in the standard specification, which is part of the addendum to the future purchase contract. Appropriate gradation is used in mm (routinely without post-fixing).

