



Apartment One-bedroom (2+kk)

€ 625 722 | CZK 15 718 126

62.34 m², Brno-město, Pisárky, Nad Pisárkami





Apartment One-bedroom (2+kk)

€ 625 722 | CZK 15 718 126

62.34 m², Brno-město, Pisárky, Nad Pisárkami

Total area	77 m ²
Floor area*	62 m ²
Balcony	14 m ²
Parking	Possibility to purchase a parking space
Garage	Yes
Cellar	7 m ²
PENB	B
Reference number	106667

This premium bright and spacious apartment with a large balcony is part of the top-class Nová Myslivna residence with a reception, swimming pool, saunas, fitness zone, and rooftop restaurant. The project is located in a beautiful area in the middle of the forest park above Pisárky Valley.

The layout of the 3rd floor apartment consists of a living room with a preparation for a kitchen, a bedroom, a bathroom, and a foyer. All rooms have access to the **balcony with beautiful views**.

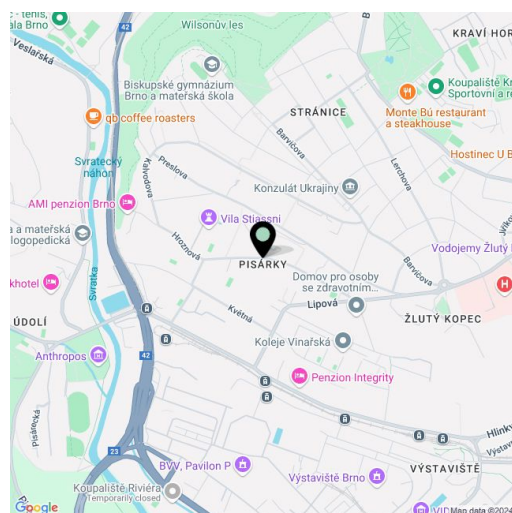
The high-standard facilities include **wooden floors made of oiled oak**, 2.1 m high rebateless doors, aluminum windows with insulating triple glazing and electrically controlled **exterior blinds**, a premium **kitchen fully equipped with appliances**, large-format ceramic floor and wall tiles, brand-name sanitary ware and faucets, and a **smart home system** controlling, among other things, **cooling, and underfloor heating**. **The purchase price includes a cellar storage cubicle. It is possible to purchase a garage or outdoor parking space.** The building uses modern sustainable technologies to reduce energy consumption (heat pumps, photovoltaic panels). Other benefits include a daytime **reception, a relaxation zone with a swimming pool, several saunas and a gym**, a stroller room, or a room for washing bikes or dogs.

The apartment building will be surrounded by **greenery with water features and landscaping**, which will naturally connect to the surrounding forest, perfect for walks or bike rides. A restaurant with impressive views of the city and the wine-growing Pálava region, 50 kilometers away, is directly in the building. There is a bus stop not far from the house, from where you can reach the city center in about 15 minutes, **Campus Square shopping center** is about 5 minutes away by car or bus.

Floor area 62.34 m², balcony 14.19 m², cellar 6.58 m².

Expected completion date is summer 2026.

For more information, please visit the project website www.novamyslivna.com.



* Area of the unit according to the Civil Code. The area consists of the sum total area of the entire unit bounded by perimeter walls.



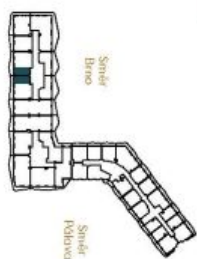
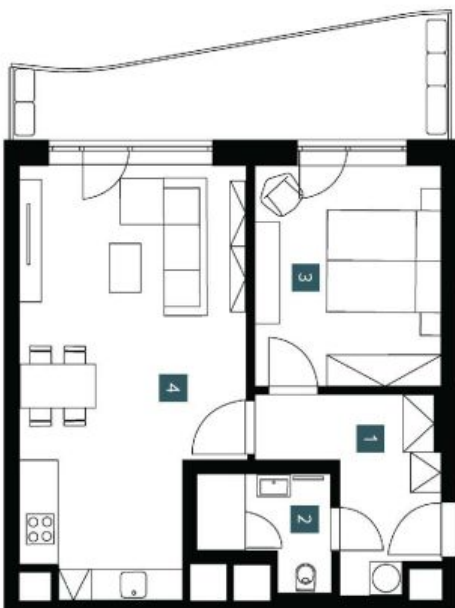
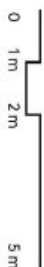
Apartment One-bedroom (2+kk)

€ 625 722 | CZK 15 718 126

62.34 m², Brno-město, Pisárky, Nad Pisárkami

2.4.06	
4. NP 2 + KK	
3rd floor 1 bdrm	
1	8,28 m²
Předstřih Hallway	
2	4,13 m²
Koupelna + WC Bathroom + WC	
3	14,08 m²
Ložnice Bedroom	
4	30,21 m²
Obývací pokoj + KK Living room + kitchen	
Úžitná plocha Useable area	56,70 m²
Podlahová plocha Floor area	62,34 m²
Balkón Balcony	14,19 m²
Celková plocha Total area	76,53 m²

EXKLUZIVNÍ ZASTOUPENÍ
svoboda&williams | CHRISTIE'S INTERNATIONAL REAL ESTATE



Předmět inzerce představuje nezávislý bytový objekt (podlaží) v zjednodušeném půdorysu (včetně balkonů, schodiště a garáže) a není součástí domovního hospodářského zařízení. Úroveň výstavby odpovídá požadavkům na bydlení v městské zástavbě. Pro více informací kontaktujte makléře. Ověřte si všechny údaje před podpisem smlouvy o nájmu nebo kupní smlouvy. Orientační plán není závazný.

Note: The area of the individual rooms are only indicative. The facilities provided in the floor plan (furniture, kitchen, electrical appliances, etc.) are not included. The delivery, design, specification, final inspection, and equipment are specified in the contract of completion, which is part of the addendum to this listing purchase contract. Apartment's gross dimension listed in mm (tolerance without posting).



NOVÁ MYSLIVNA