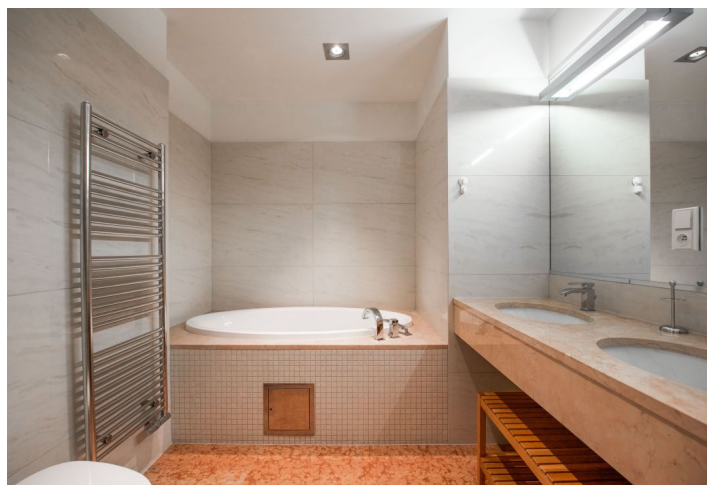
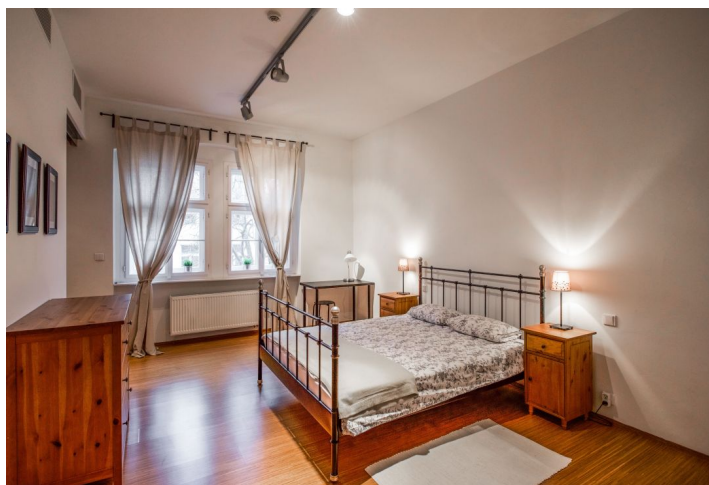




Apartment One-bedroom (2+kk)

€ 559 006 | CZK 13 950 000

61 m², Prague 1, Nové Město, Truhlářská



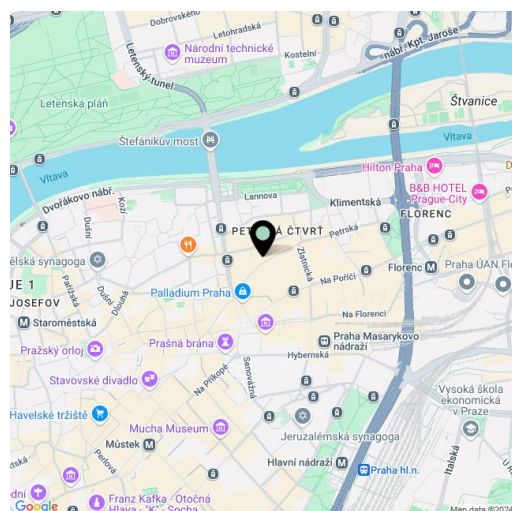


Apartment One-bedroom (2+kk)

€ 559 006 | CZK 13 950 000

61 m², Prague 1, Nové Město, Truhlářská

Total area	61 m ²
Parking	-
Cellar	-
PENB	G
Reference number	106830



* Size of the unit according to the Housing Act.
The area consists of the sum total of the internal area of every room.

This well-renovated apartment with air-conditioning and windows overlooking a quiet courtyard is located on the 3rd floor of a sensitively restored historic apartment building with an elevator and elegant common areas. The building is situated on a side one-way street leading to Republic Square.

The interior consists of a bright corner living room with a kitchen, a bedroom with an en-suite bathroom (bathtub, 2 sinks, toilet with bidet shower), an entrance hall, and a guest toilet.

During the renovation in 2012, **high-quality materials and fittings** were used. The apartment is equipped with **built-in air-conditioning, bamboo floors, heated tiles** in the bathroom, built-in wardrobes, and a kitchen by the **Sykora** brand. Central gas heating. Residents' safety is ensured by a video intercom, an alarm system with the possibility of connecting it to a central security office, and a camera system in the building. There are several options for renting covered parking spaces nearby.

In the immediate vicinity, there is a metro station, tram stops, the **Palladium** shopping center, Kotva department store, and the **Na Příkopě** shopping boulevard. Both **Wenceslas and Old Town squares** are within walking distance, with numerous restaurants specializing in cuisines from all over the world, shops, banks, offices, healthcare services, and sports facilities in the vicinity. **Lannova Park** or the expansive **Letná Gardens**, offering beautiful views of the city's skyline, are quiet local oases.

The apartment is rented until June 30th, 2025.

The floor area is 60.86 m².



Apartment One-bedroom (2+kk)

€ 559 006 | CZK 13 950 000

61 m², Prague 1, Nové Město, Truhlářská

