



Apartment Two-bedroom (3+kk)

€ 476 361 | CZK 11 990 000

80 m², Prague 5, Jinonice, Butovická





Apartment Two-bedroom (3+kk)

€ 476 361 | CZK 11 990 000

80 m², Prague 5, Jinonice, Butovická

Total area	80 m ²
Parking	-
Cellar	Yes
PENB	G
Reference number	107074

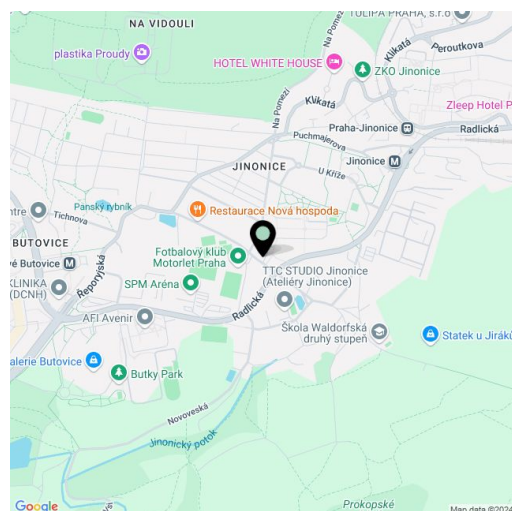
Spacious apartment in a historic house with unique craftsmanship elements that is part of a traditional residential development in old Jinonice with an impressive atmosphere and excellent transport accessibility.

The layout of the ground floor apartment consists of a **south-facing** living room with a high ceiling (3.7 m) and a fully equipped kitchen, a bedroom with a **walk-in wardrobe**, a 2nd bedroom, a bathroom with a bathtub, toilet, and bidet, a separate toilet, and a hallway.

The intimate residence consists of only **6 residential units**. The apartment has **wooden windows, wooden glued three-layer floors** and a wooden varnished entrance door with security fittings. The bathroom is fully equipped including a heated towel rail, and the heat source is a shared gas boiler. The purchase price includes a **cellar**.

A convenient location in a **nice and quiet place** and at the same time within walking distance of everything you need. The house is part of the original **historical development**, the dominant feature of which is the **Church of St. Lawrence from the 11th century** and a **wooden bell tower**. It only takes a few minutes to walk to the Jinonice metro station, and in the nearby **Waltrovka** new residential district there is a supermarket, other shops, and restaurants, as well as a kindergarten, a Waldorf and classical elementary school, or a Charles University building. A bike path runs through the area, along which you can reach the **Prokopské údolí nature reserve** in just a short time.

Floor area 80 m² (according to the owner's declaration).



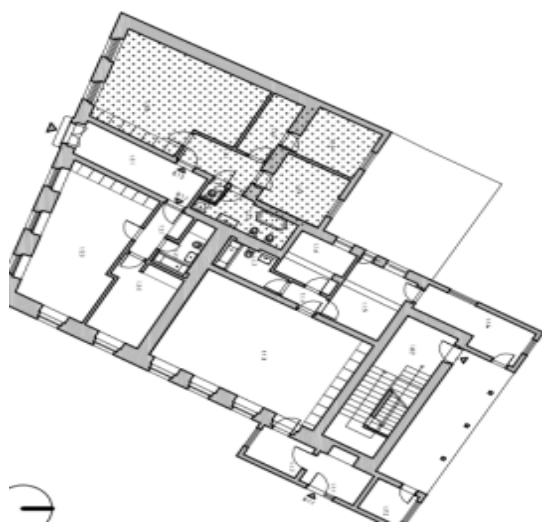
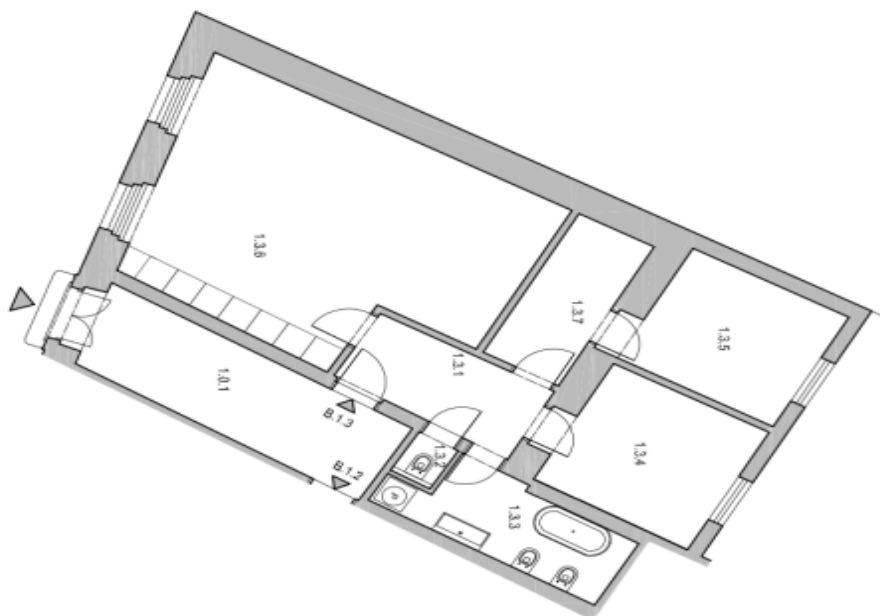
* Area of the unit according to the Civil Code. The area consists of the sum total area of the entire unit bounded by perimeter walls.



Apartment Two-bedroom (3+kk)

€ 476 361 | CZK 11 990 000

80 m², Prague 5, Jinonice, Butovická



1.NP BYT B.1.3 3+kk		
ozn.	název místnosti	plocha [m ²]
1.3.1	chodba	6.88
1.3.2	loaleta	1.00
1.3.3	koupelna	7.45
1.3.4	ložnice	10.78
1.3.5	ložnice	10.16
1.3.6	obývací pokoj	35.35
1.3.7	šatna	6.00
Celková plocha bytu		77.80