



Apartment One-bedroom (2+kk)

€ 330 330 | CZK 8 250 000

65.06 m², Jablonec nad Nisou, Josefův Důl





Apartment One-bedroom (2+kk)

€ 330 330 | CZK 8 250 000

65.06 m², Jablonec nad Nisou, Josefův Důl

Total area	65 m ²
Parking	Outdoor parking space for an additional cost
Cellar	5 m ²
PENB	E
Reference number	107986

This new attic semi-residential unit is part of the Antonínov Mountain Apartments boutique project with only 7 units. The fully renovated, stylish mountain house with a garden and parking is located near the Tanvaldský Špičák ski resort, on a sunny southern slope, in the heart of the beautiful landscape of the Jizera Mountains Protected Landscape Area.

The unit, located on the 2nd floor, has a floor area that is divided into a bright living space with a preparation for a kitchen, one bedroom, a bathroom, and an entrance hallway.

A renowned architectural studio designed the house in a traditional style and color scheme. Facilities include **electric underfloor heating with Wi-Fi thermostats**, light beige large-format tiles, vinyl floors with an oak design, spruce wood entrance doors with **walnut glazing**, white lacquered interior doors, a **videophone**, and sanitary ware and faucets from Hansgrohe, SAT, and Kaldewei. The unit includes a **storage locker** and an **outdoor parking space for additional cost**. Three parking spaces will be reserved for visitors. There will be a **preparation for electric car chargers by the parking spaces**. Residents will have access to a **shared garden**.

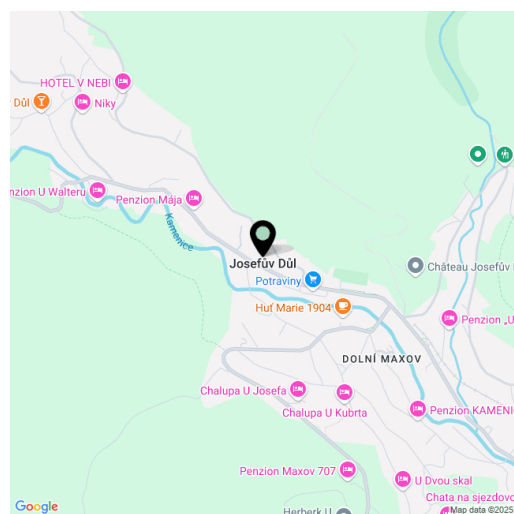
Antonínov is a part of the village of **Josefův Důl**, located less than 30 minutes by car from Liberec, where there is a small **ski resort** just 1 km away from the building. There is also a sports complex with tennis and volleyball courts, as well as a football field, a grocery store, a restaurant, and a café. The winter landscape features **groomed cross-country trails**, and the nearby ski resorts include **Tanvaldský Špičák**, **Albrechtice** in the **Jizera Mountains**, and **Severák**. Nearby attractions include the **Protržená Dam**, the **Královka** and **Bramberk** observation towers, the picturesque settlement of Mariánská Hora, and **Jizerka**, located in the unique **Jizera Dark Sky Area**. The village has a train connection to **Smržovka**, where a **popular natural toboggan run** from Černá Studnice leads.

Floor area 65.06 m², cellar 5.15 m².

Subject to special legal conditions.

Planned completion: Q3 2025.

Visualizations are used in the presentation.



* Area of the unit according to the Civil Code. The area consists of the sum total area of the entire unit bounded by perimeter walls.

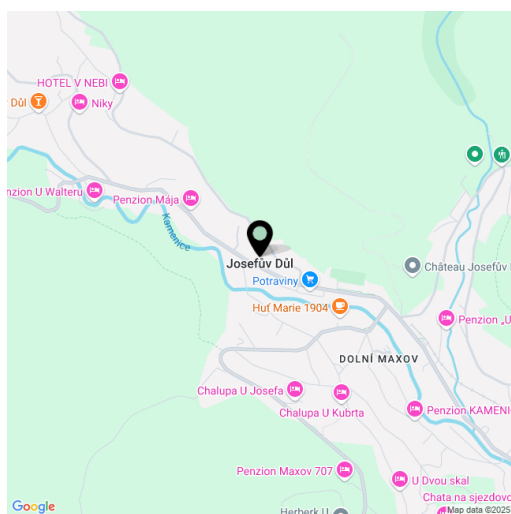


Apartment One-bedroom (2+kk)

€ 330 330 | CZK 8 250 000

65.06 m², Jablonec nad Nisou, Josefův Důl

Total area	65 m ²
Parking	Outdoor parking space for an additional cost
Cellar	5 m ²
PENB	E
Reference number	107986



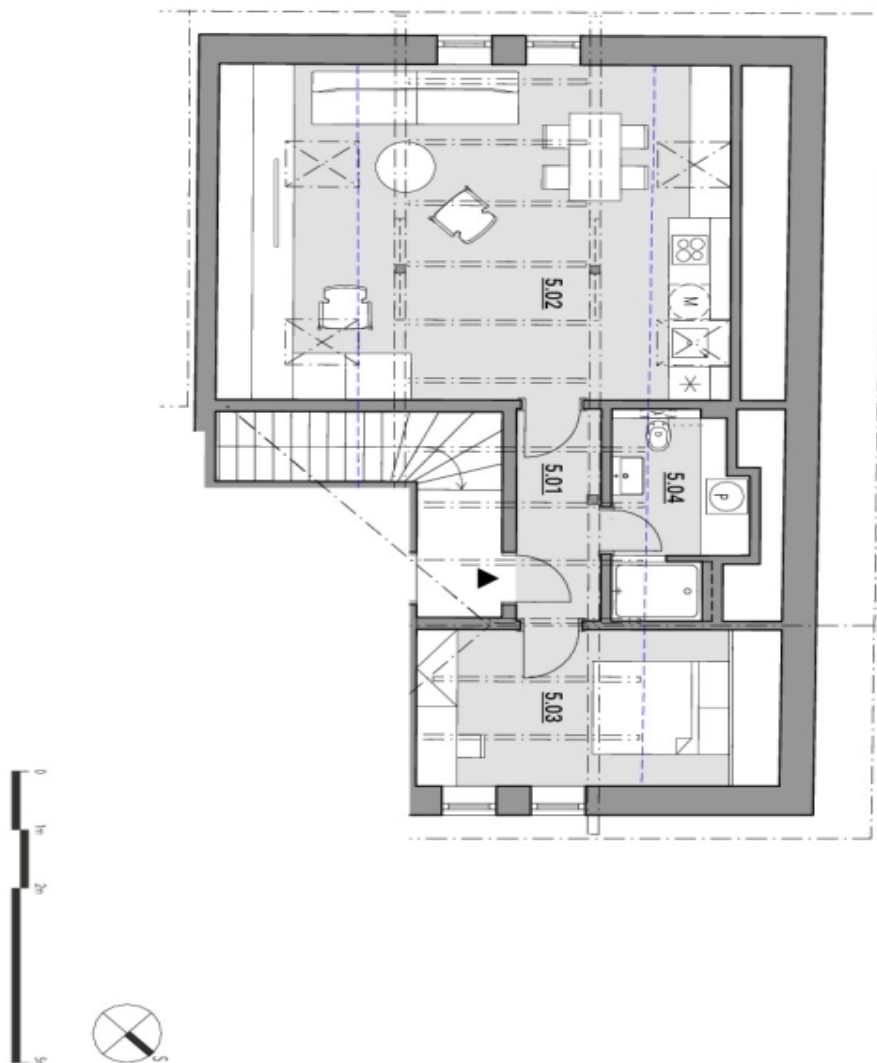
* Area of the unit according to the Civil Code. The area consists of the sum total area of the entire unit bounded by perimeter walls.



Apartment One-bedroom (2+kk)

€ 330 330 | CZK 8 250 000

65.06 m², Jablonec nad Nisou, Josefův Důl



Podkroví 2+kk		
5.01	chodba	4,50 m ²
5.02	obytý prostor s kuchyní	39,23 m ²
5.03	pokoj	12,50 m ²
5.04	koupelna	5,61 m ²
vnitřní příčky do v. 1,2m		3,22 m ²
podlahová plocha (s v. min 1,2m)		65,06 m ²
světla výška místnosti = 2,3m		

