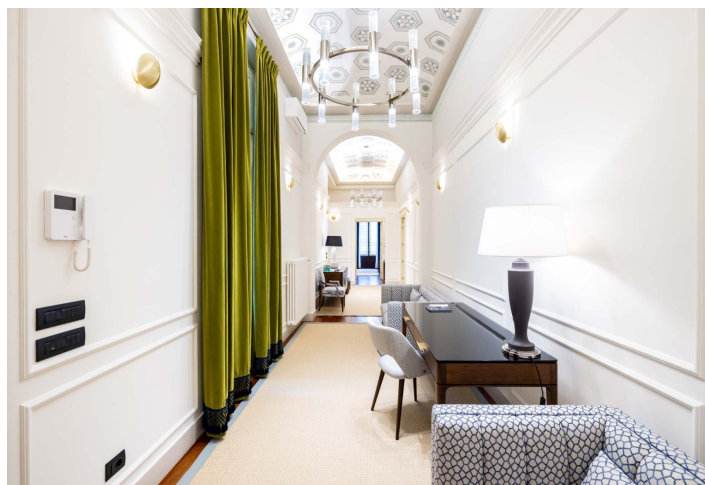
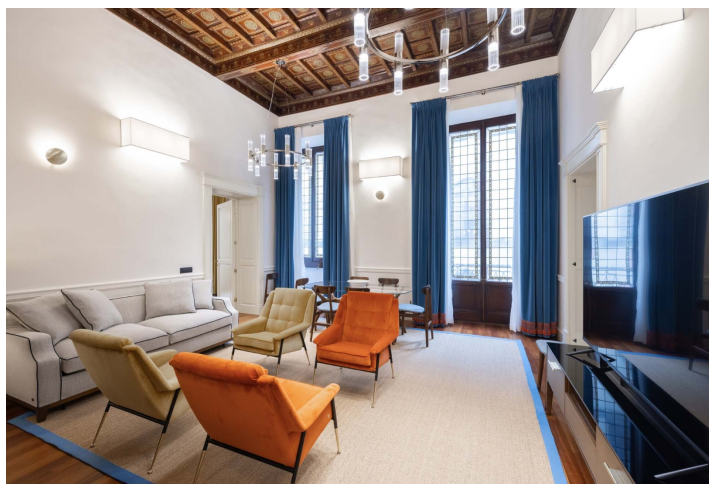
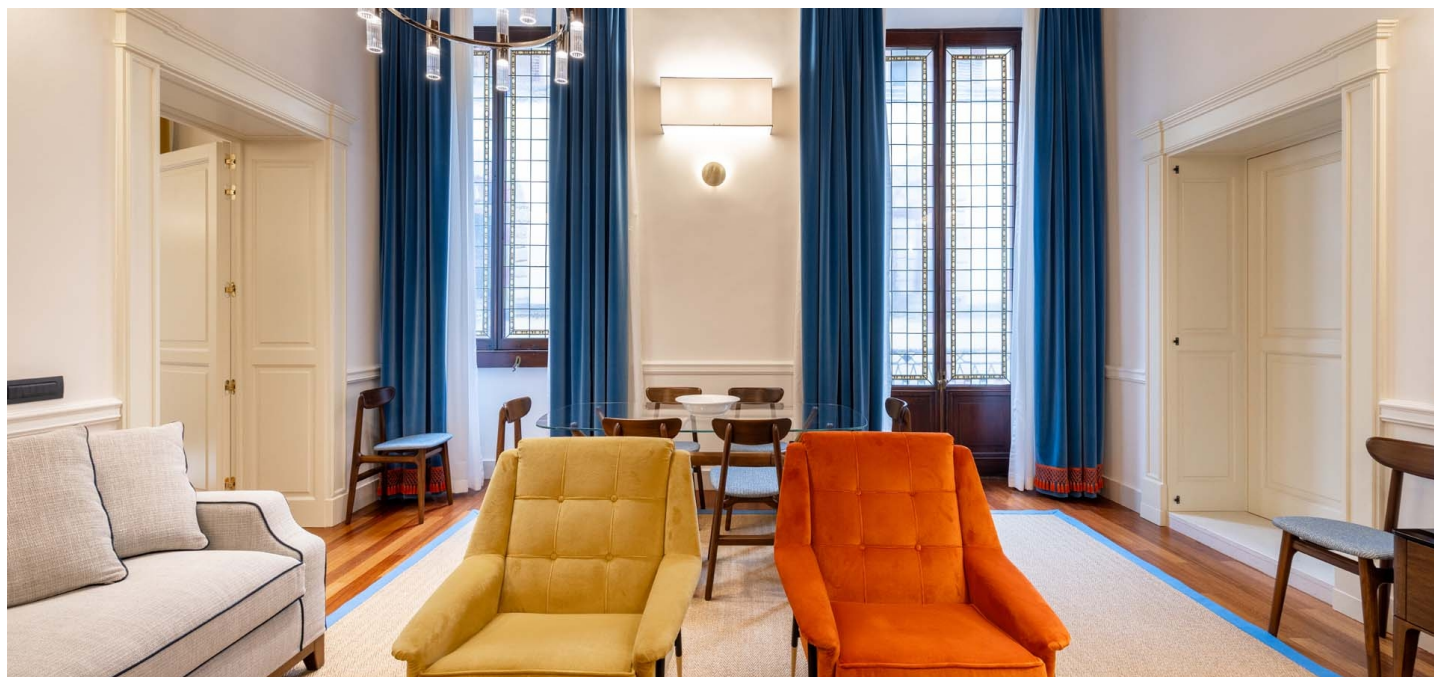




Apartment Two-bedroom (3+1)

€ 2 965 338 | CZK 74 000 000

210 m², Florence, Tuscany





Apartment Two-bedroom (3+1)

€ 2 965 338 | CZK 74 000 000

210 m², Florence, Tuscany

Total area	210 m ²
Parking	-
Cellar	-
PENB	E
Reference number	108276

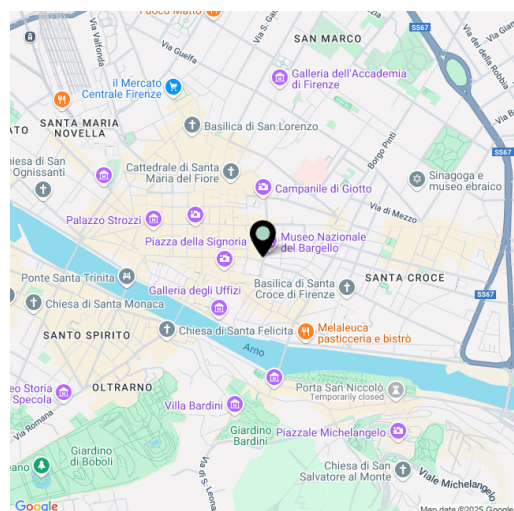
In the heart of historic Florence, this beautiful 200 m² apartment features 2 bedrooms and 4 bathrooms. Its balcony overlooks the iconic Cathedral of Santa Maria del Fiore. The air-conditioned apartment is located on the main floor, the piano nobile, of a Renaissance palace with a lift that belonged to the famous Florentine architect Bernardo Buontalenti in the 16th century.

The impressive entrance hall leads to a balcony overlooking the courtyard and also to a corridor that connects all the rooms of the apartment. From there, you enter a spacious living room with dining room and balcony overlooking the cathedral, kitchen, bathroom, master bedroom with ensuite bathroom and toilet and a second bedroom. Opposite the kitchen, a staircase leads to the mezzanine, where there is another bathroom and a utility room.

The apartment has undergone a thorough renovation with an emphasis on preserving the original features. Hand-painted doors from Tuscan craftsmen respect the style of the interior. Double-glazed windows minimize heat dissipation and provide excellent sound insulation. The floors are covered with solid wooden parquet. Painted vaulted ceilings, decorated beams and floral motifs stand out in the rooms and hallway. The apartment is fully air-conditioned, equipped with fast Wi-Fi and LED lighting.

Florence, the cradle of the Renaissance, is full of narrow streets, beautiful squares and iconic monuments such as the Cathedral of Santa Maria del Fiore, Palazzo Vecchio and Ponte Vecchio. The city enchants with its unique atmosphere and top-notch Tuscan gastronomy. The historic center offers all the necessary services, countless shops, boutiques, restaurants and cafes. Other famous places in Tuscany (Siena, Lucca, Pisa, Livorno, Arezzo, Grosseto) can be reached by car in less than 2 hours. The nearest airport in Florence is 10 km away.

Floor area 210 m².



* Area of the unit according to the Civil Code. The area consists of the sum total area of the entire unit bounded by perimeter walls.