





Hotel

242 m², Břeclav, Pavlov, Na Cimbuří[Ask for price](#)

Total net leasable area of the building	242 m ²
Cellar	60 m ²
Parking	-
PENB	G
Reference number	108333

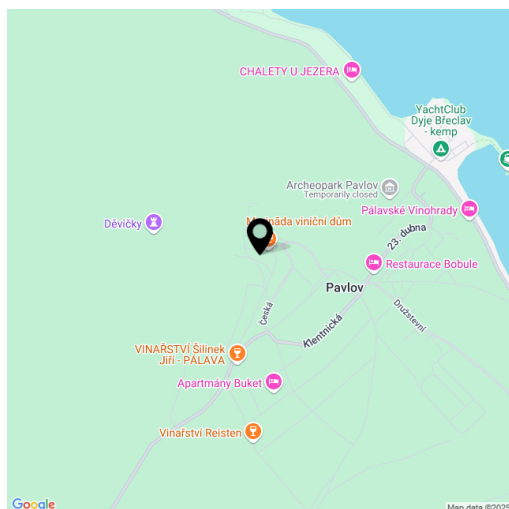
At the foot of the Pálava Protected Landscape Area, directly beneath the ruins of Dívčí hrady, lies this charming boutique hotel, which was created by converting a heritage-protected vineyard house from the 17th–18th century. It offers accommodation in three stylish, themed suites, a cozy café, and a terraced garden with a seating area by the fire pit.

Key investment criteria

- immovable cultural monument
- a 17th–18th century building now **fully renovated**
- currently operating a hotel and café
- **net floor area: 242 m²**
- of which basement space: 60 m²
- plot: 376 m²
- fully equipped with **premium furnishings**
- attractive location in the Pálava Protected Landscape Area, near Mikulov and the Lednice-Valtice area
- approved as a building for family recreation with a café operation

Property description

- ground floor: **café** with facilities and a capacity of 20 guests, guest restrooms, storage room, terrace (capacity of 20 guests)
- 1st floor: common room with a kitchen and large table, restroom, utility room, apartment with a bedroom and private bathroom
- 2nd floor: two apartments, each with a bedroom, bathroom, and walk-in closet
- 1st basement floor: cellar from 1721, currently used as a **wine cellar** with a capacity of 20 guests
- **a Renaissance and Baroque façade of exceptional artistic value**
- the ground floor of the house previously housed a cellar with a front press room
- extensive renovation in 2021, including the roof, interior structures, and utilities
- all wooden elements in the house custom-made by the Czech company **ACER Brno**
- windows with wide interior sills for seating
- wooden or limestone (**travertine**) floors
-





Hotel

242 m², Břeclav, Pavlov, Na Cimbuří

[Ask for price](#)

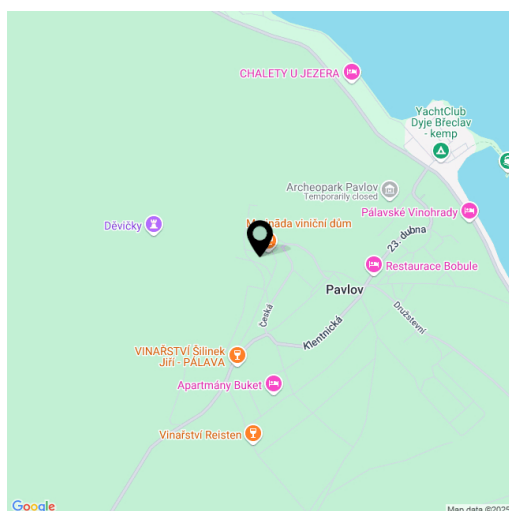
Total net leasable area of the building	242 m ²
Cellar	60 m ²
Parking	-
PENB	G
Reference number	108333

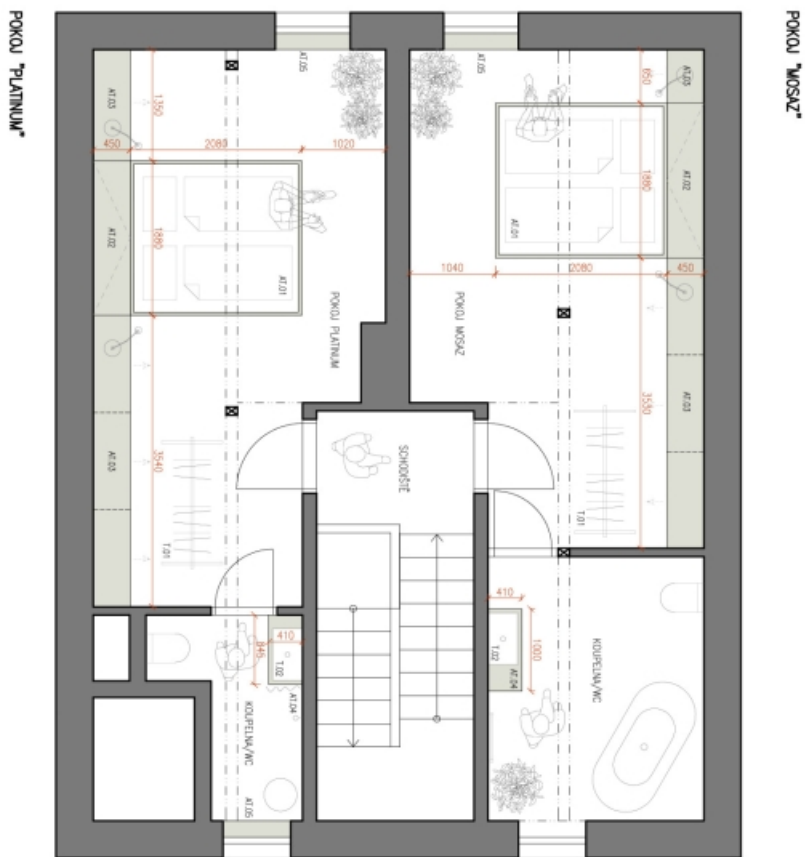
wooden interior doors

- bathrooms equipped with high-quality sanitary ware and **underfloor heating**
- heating and hot water provided by a gas boiler
- **security system**
- complete **sound system** (house, café, front terrace, garden)
- tiered garden with multiple terraces, a table for 20 guests, and fire pit

Location

The picturesque South Moravian wine-growing village of **Pavlov** is located on the banks of the Nové Mlýny reservoir and on the edge of the **Pálava Protected Landscape Area**, which is renowned not only for its top-quality wines and characteristic architecture of wine cellars, but also for its rich history dating back to prehistoric times. Discoveries from this era are brought closer to visitors through the exhibits of the unique underground Archeopark Pavlov museum. The area also attracts nature lovers, hikers, and cyclists, with popular destinations including the ruins of **Děvičky Castle** (Maiden's Castle), the historic center of Mikulov, and the **Lednice-Valtice area**.





POKOU "MOSAZ"

POKOU "PLATINIUM"

LEGENDA MOKCH INTERIÉROVCH AJNE PRVOK:

- A1.01 – montážne okno
- A1.02 – perník/dubový prstoz
- A1.03 – otvori stôlok/dubový prstoz/výsuv
- A1.04 – sedacie pod umyvadlom
- A1.05 – prstoz/dubová tyčka podlahy zdiava

LEGENDA MOKCH INTERIÉROVCH DUBOVCH PRVOK:

- T.01 – stôpka na obetkani Komp
- T.02 – bekon umyvadla Grawell Box

LEGENDA INTERIÉROVCH PRVOK:

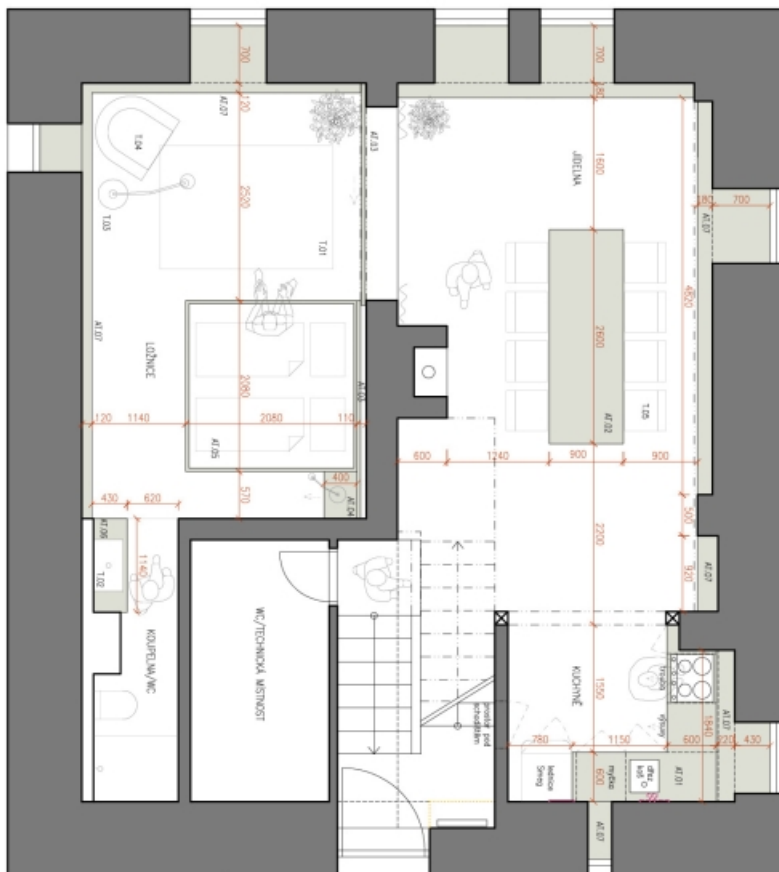
- rožok dšpny prky
- rožok typové prky

VEŠKERÉ MÍRY NUTNO PŘEČÍST A ZKONTROLOVAT SE STAVBOU

KONCEPT INTERIERU

PROJEKTANT: ACER WOODWAY, s.r.o. - Ing. Michal Indra, Brno
 INVESTOR: MARIANNA PAVLŮVKA
 MÍSTO: Pavlov
 DATUM: leden 2020
 ZNP - POKOJE MOSAZ A PLATINIUM
 M - 1:50

02



LEGENDA KUCHNĚ INTERIÉROVÝCH PRVKŮ:

- A1.01 – kuchyňská linka
- A1.02 – jídelní stůl/prací
- A1.03 – posuvná dvéře/okna za potažit
- A1.04 – mobilní stůl/kuchyň prvek/výšuv
- A1.05 – montážská útlava
- A1.06 – deska pod umyvadlem
- A1.07 – praporek/děsna krytí pěníd, žebra

LEGENDA KUCHNĚ INTERIÉROVÝCH TYPICKÝCH PRVKŮ:

- T.01 – kábitec 150x210mm
- T.02 – beton, umyvadlo Grawell Box
- T.03 – stěnový lampový
- T.04 – křeslo?
- T.05 – [identif. židle/křeslo?]

LEGENDA INTERIÉROVÝCH PRVKŮ:

- rooké dříví prkny
- rooké typové prkny

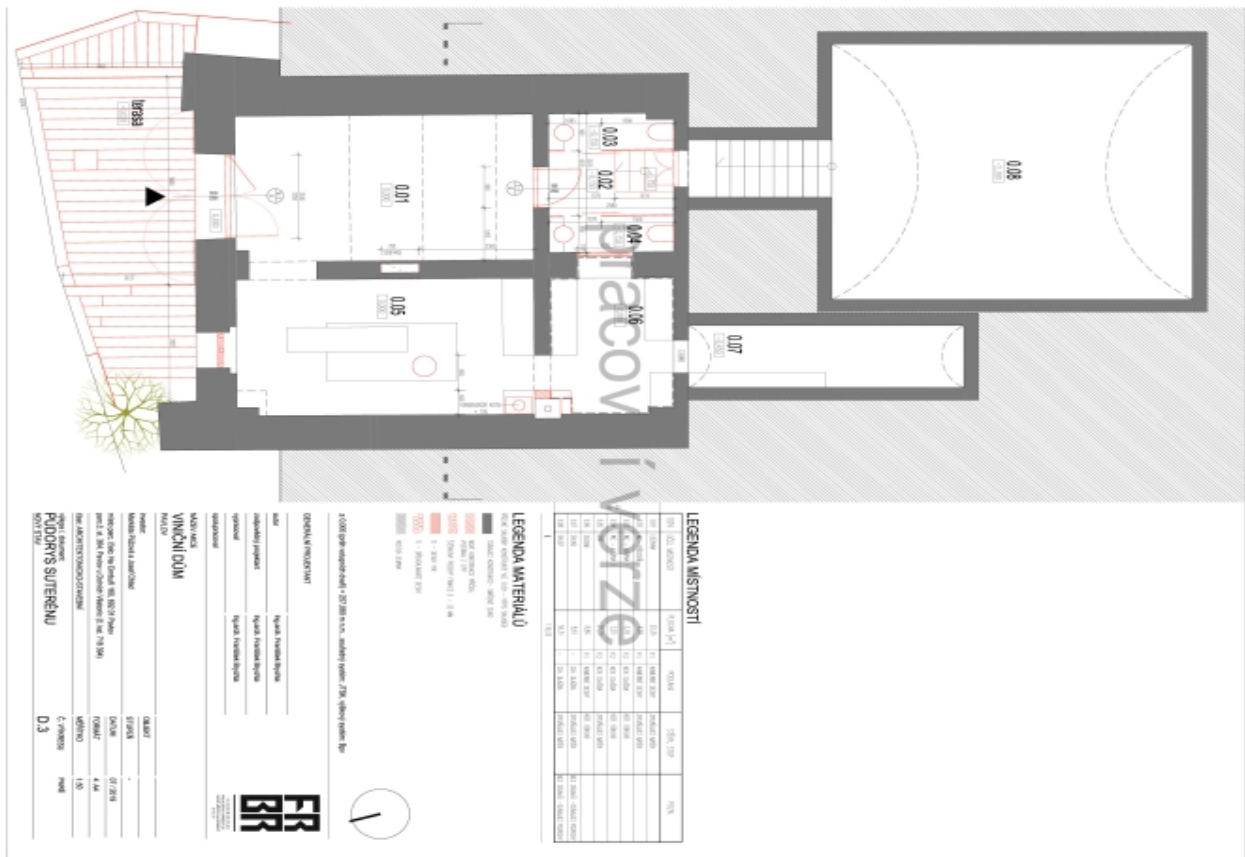
VEŠKERÉ MÍRY NUTNO PŘEČÍST A ZKONTROLOVAT SE STAVBOU

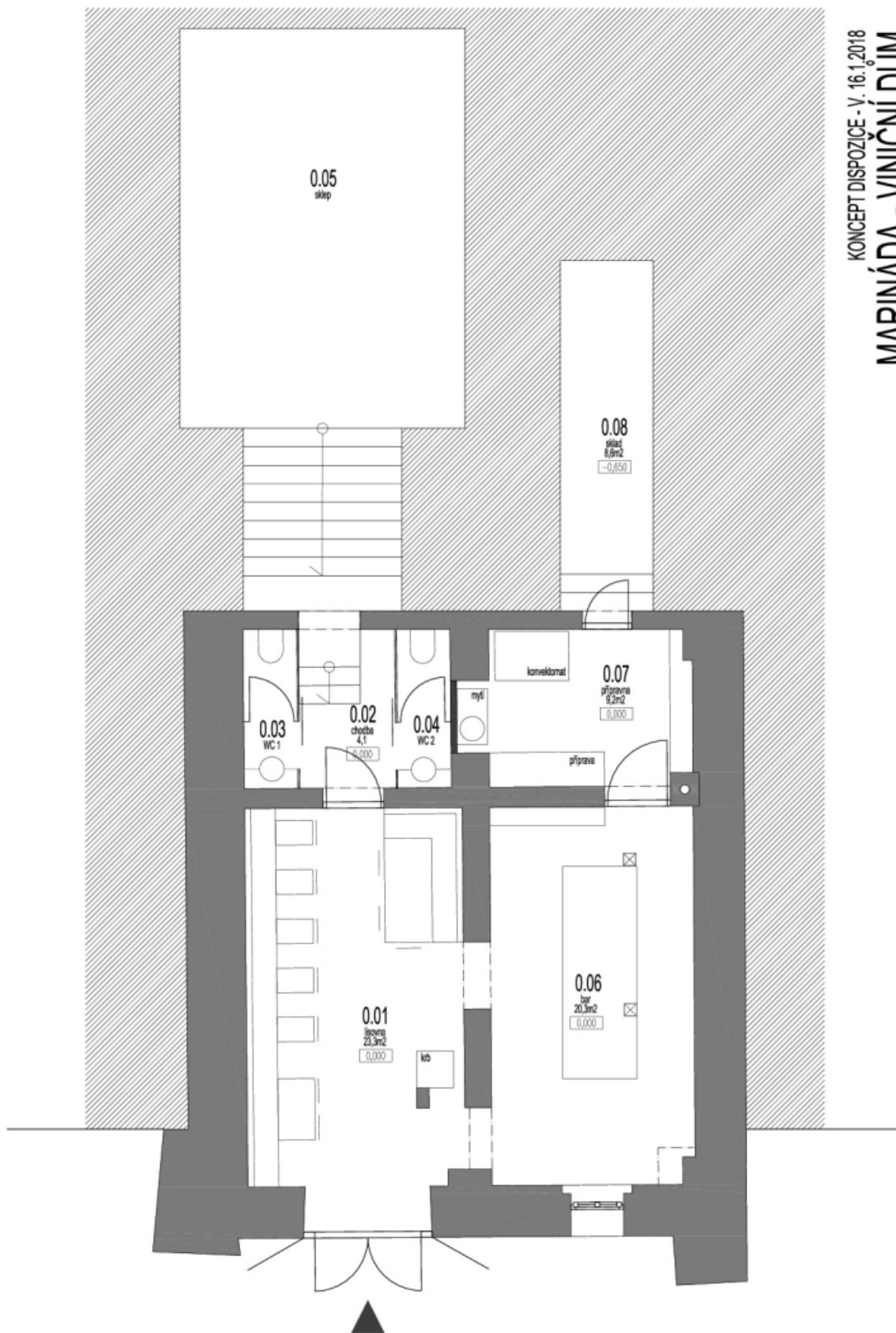
01

KONCEPT INTERIERU

PROJEKTANT: ACER WOODWAY, s.r.o. - Ing. Michal Indra, Brno
 INVESTOR: MARIANNA PAULOVÁ, Pavlov
 MÍSTO: MARIANNA PAULOVÁ, Pavlov
 DATUM: leden 2020
 M - 1:50







KONCEPT DISPOZICE - V. 16.1.2018
MARINÁDA - VINIČNÍ DŮM