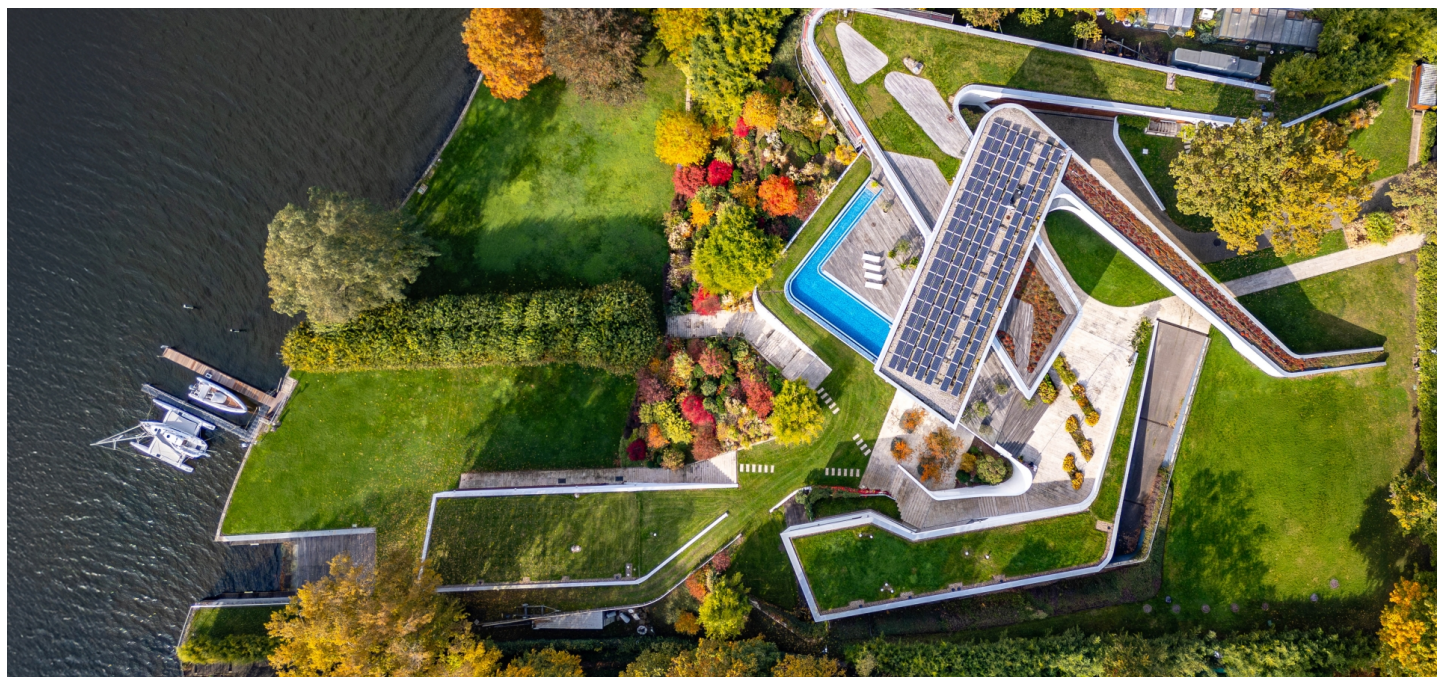




House Nine-bedroom (10+1)

2 524 m², Berlin, Brandenburg

Ask for price





House Nine-bedroom (10+1)

[Ask for price](#)

2 524 m², Berlin, Brandenburg

Plot	10 724 m²
Foot print	1 490 m²
Parking	7 parking spaces
Garage	Yes
Cellar	-
PENB	G
Reference number	108390

Arguably one of the most impressive residential properties in Europe due to its unique location on Schwanenwerder Island in Berlin, iconic design, and panoramic views of Lake Wannsee, this sprawling villa with an outdoor pool has a private waterfront with a pier and is surrounded by 10 hectares of land providing complete privacy. It offers numerous possibilities for use, from a private residence to elegant corporate headquarters.

The living area of approximately 1,490 m² is spread over two interconnected buildings. The layout includes 30 rooms, 9 bedrooms and 8 bathrooms. The main terrace features a 20 m infinity pool with **sunset views**. **Seven parking spaces are available**.

The villa is located on the western side of **Schwanenwerder** Island, which is one of the most exclusive residential locations not only in Berlin, but also in Germany and Europe. On a clear day, you can see as far as the historic **Belvedere** Palace in Potsdam. The center of Berlin is reachable in 20 minutes by car.

Total area 2,524 m², plot 10,724 m².

