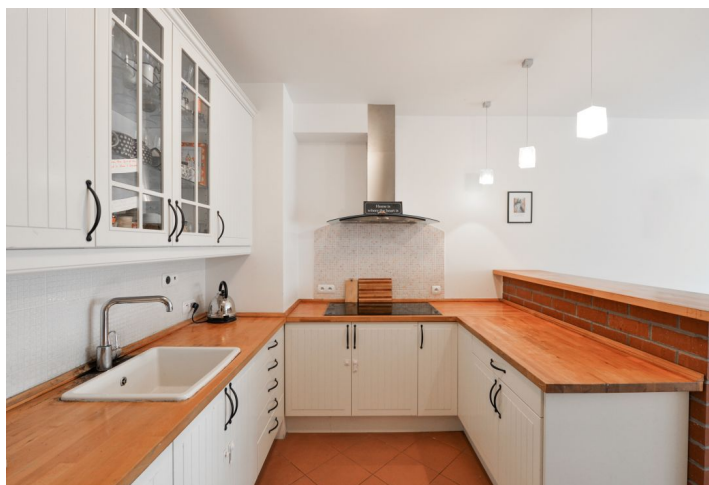




## Apartment Three-bedroom (4+kk)

Sold

116 m<sup>2</sup>, Prague 6, Vokovice, Tibetská





## Apartment Three-bedroom (4+kk)

**Sold**116 m<sup>2</sup>, Prague 6, Vokovice, Tibetská

Total area	141 m <sup>2</sup>
Floor area*	116 m <sup>2</sup>
Terrace	25 m <sup>2</sup>
Parking	400 000
Garage	Yes
Cellar	Yes
Service price	6 500 CZK monthly
PENB	C
Reference number	18925

This ground-floor apartment with a large terrace overlooking the park is part of a residential block with a reception, security, and an underground garage. The Terasy Červený Vrch residential project is located in the immediate vicinity of a cherry orchard, in a place with a wide range of services and easy access to the center and airport.

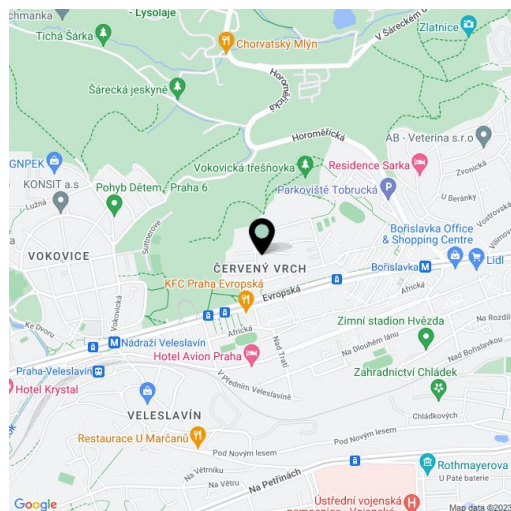
The living room is connected to the kitchen and the **25.41 sq. m. terrace**. There are also 3 bedrooms (one is with en-suite bathroom with a shower) with a view of the greenery, a bathrooms (with a bathtub, sink, and toilet), a spacious entrance hall with built-in wardrobe and a closet, a guest toilet, and a utility room.

Facilities include wooden floors, **wooden Euro windows** with aluminum interior blinds, a security entry door, an alarm, a **safe**, and a complete kitchen. The purchase price includes a **garage parking space** and a brick **cellar**.

The residential block is located on a very quiet dead end street. On the other side of the building there is a green area adjoining the **Sarka-Lysolaje natural park**, which provides a wide range of possibilities for sports activities and walks. Several kindergartens (1 right nextdoor), an elementary and high school, playgrounds, a supermarket, and other shops are within walking distance. The Bořislavka metro station is a 10-minute walk away, while a tram stop is even closer. The airport is just 12 minutes away by car.

Interior 115.50 m<sup>2</sup>, terrace 25.41 m<sup>2</sup>, cellar 3.71 m<sup>2</sup>.

In addition to regular property viewings, we also offer **real time video viewings** via WhatsApp, FaceTime, Messenger, Skype, and other apps.



\* Area of the unit according to the Civil Code. The area consists of the sum total area of the entire unit bounded by perimeter walls.



# Apartment Three-bedroom (4+kk)

**Sold**

116 m<sup>2</sup>, Prague 6, Vokovice, Tibetská

