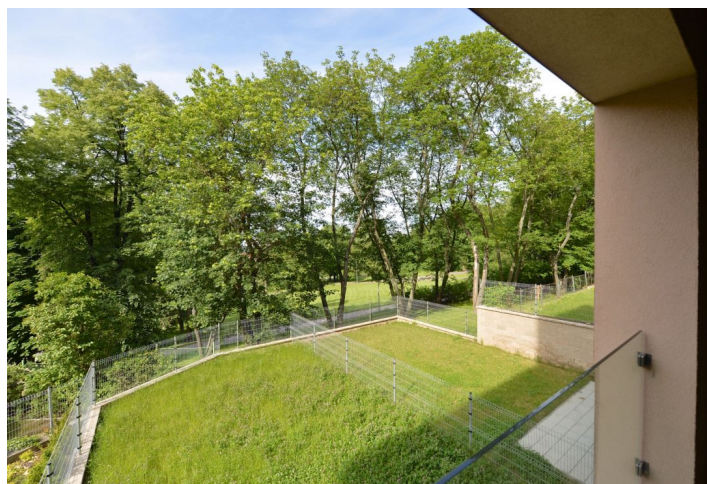
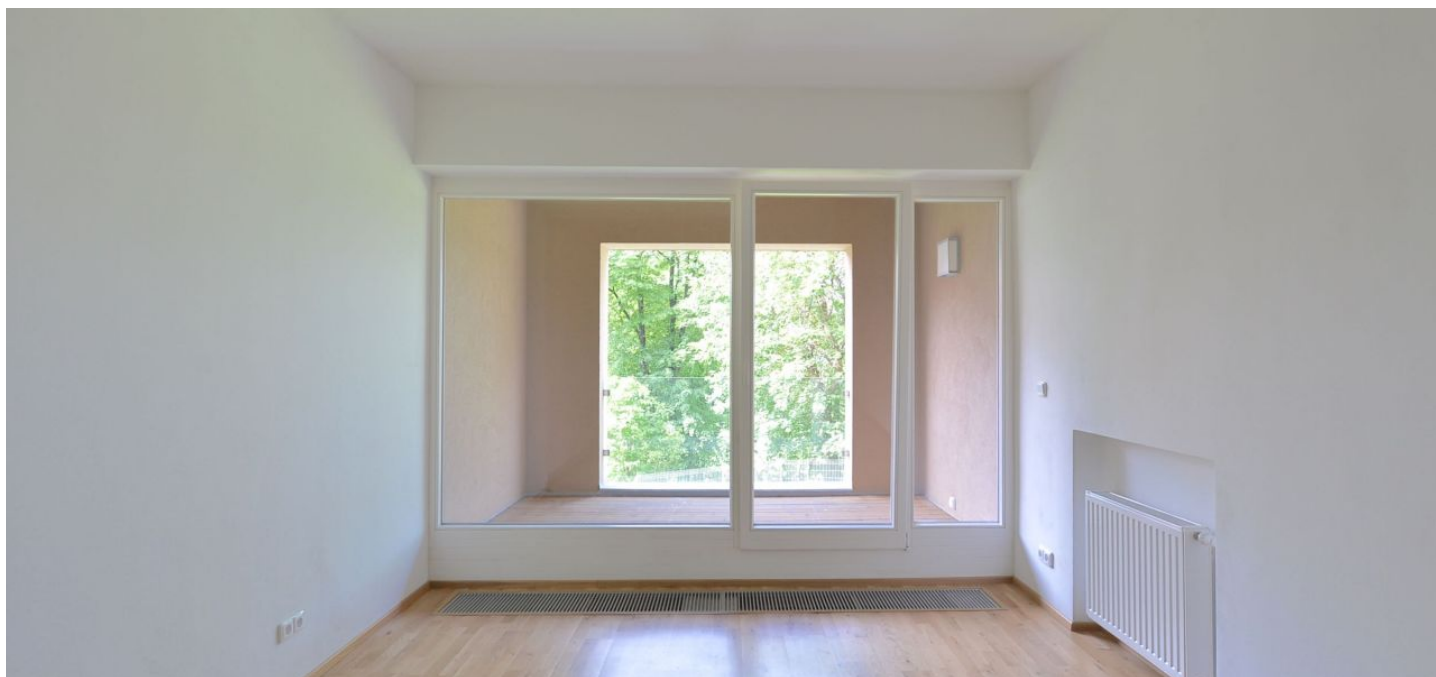




Apartment Two-bedroom (3+kk)

Rented

75 m², Prague 6, Břevnov, Nad Závěrkou





Apartment Two-bedroom (3+kk)

Rented

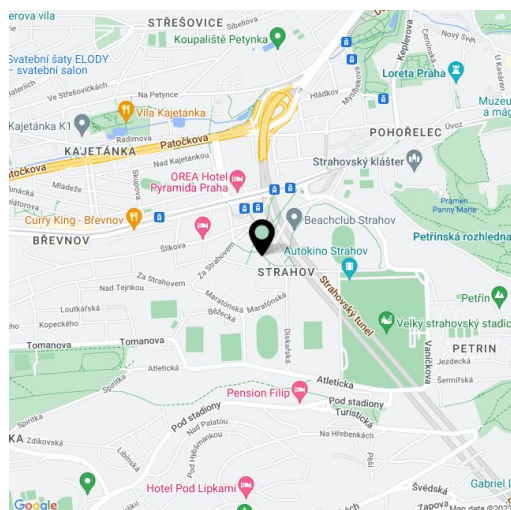
75 m², Prague 6, Břevnov, Nad Závěrkou

Total area	81 m ²
Floor area*	75 m ²
Loggia	6 m ²
Parking	-
Cellar	Yes
PENB	G
Reference number	22529
Available from	Immediately

Quiet upper ground floor 2-bedroom flat with an enclosed balcony (6 m²) and green views, in one of the most attractive residential areas of Prague 6, Břevnov. The reconstructed residential building with lift is directly adjacent to a green park. Popular location near the Prague Castle (just a 15 minute walk), in close vicinity of Ladronka Park. Quick access to the city center, full amenities within walking distance.

The interior features a spacious living room with a fully fitted open kitchen and balcony facing the adjacent park, two separate bedrooms, bathroom with bathtub, a separate toilet, and entry hall.

Wooden floors and tiles, security entrance door, gas boiler, dishwasher, microwave oven, audio entry phone. Cellar. Common building charges and utilities approx. CZK 3000 per month.



* Area of the unit according to the Civil Code. The area consists of the sum total area of the entire unit bounded by perimeter walls.



Apartment Two-bedroom (3+kk)

75 m², Prague 6, Břevnov, Nad Závěrkou

Rented

