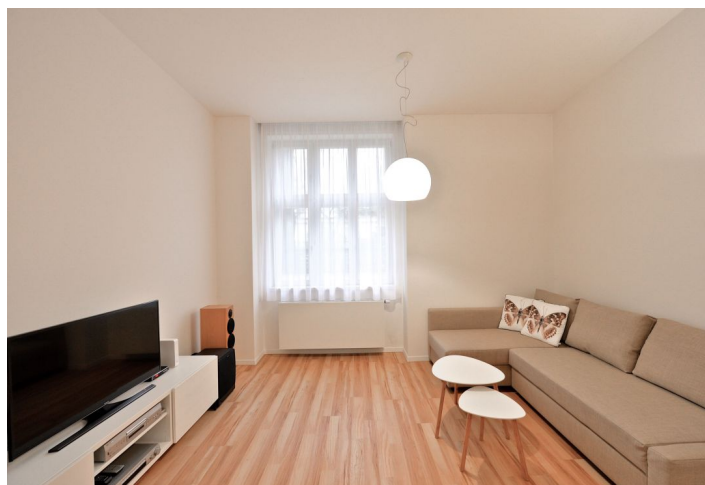
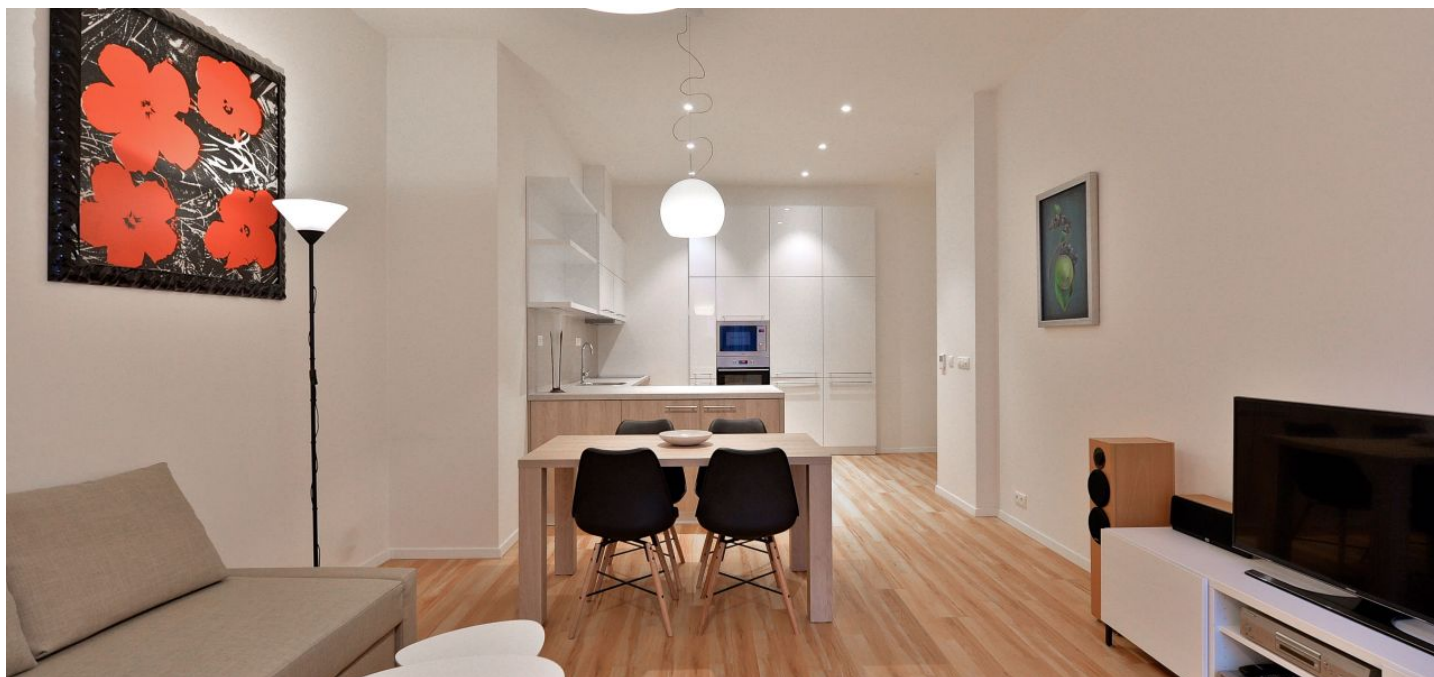




## Apartment One-bedroom (2+kk)

Rented

65 m<sup>2</sup>, Praha 7, Bubeneč, Ověnecká





## Apartment One-bedroom (2+kk)

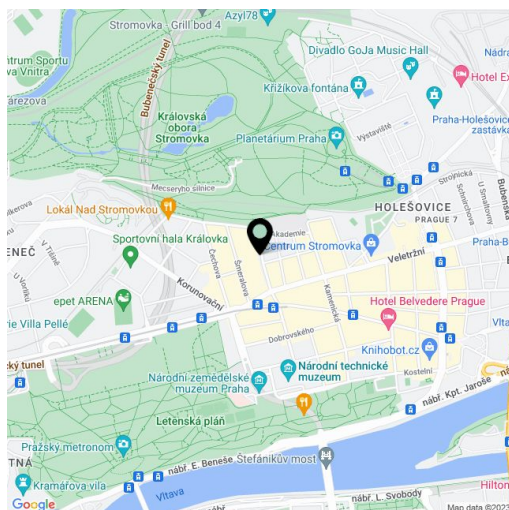
**Rented**65 m<sup>2</sup>, Praha 7, Bubeneč, Oveňecká

<b>Total area</b>	65 m <sup>2</sup>
<b>Parking</b>	Possibility to rent garage parking space in the building.
<b>Garage</b>	Yes
<b>Cellar</b>	Yes
<b>PENB</b>	D
<b>Reference number</b>	22601
<b>Available from</b>	Immediately

Located in an excellent location just steps from Stromovka Park, the largest park in Prague, this brand new fully furnished 1-bedroom ground floor apartment is situated in a modern residence that has recently undergone a complete reconstruction. Set on a quiet street in the prestigious neighborhood of Bubeneč, with great transportation access - the Letenské náměstí tram stop is a short walk from the building, and it's a few short tram stops to the Hradčanská and Vltavská metro stations. Convenient access to Letenské Sady Park, the Prague Castle, the airport, and international schools.

The interior features a living room with a dining area and a fully fitted open plan kitchen, one bedroom, a shower bathroom with a toilet, and an entry hall. The apartment faces a quiet green courtyard.

Other features include vinyl floors, large windows, a security entry door, built-in wardrobes and storage, recessed lighting, a washing machine, a dishwasher, a microwave oven, a TV, a video entry phone, and a 7.6 m<sup>2</sup> cellar. Parking space can be rented in underground garages of the building at extra charge. The deposit for the common building charges and utilities is CZK 3,000/month. Available from August 2021.



\* Area of the unit according to the Civil Code. The area consists of the sum total area of the entire unit bounded by perimeter walls.