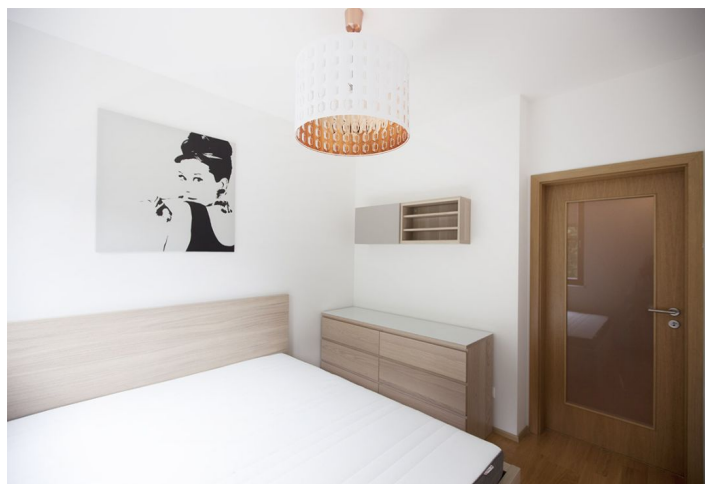




## Apartment One-bedroom (2+kk)

Rented

38 m<sup>2</sup>, Praha 6, Veleslavin, Pod Dvorem





## Apartment One-bedroom (2+kk)

Rented

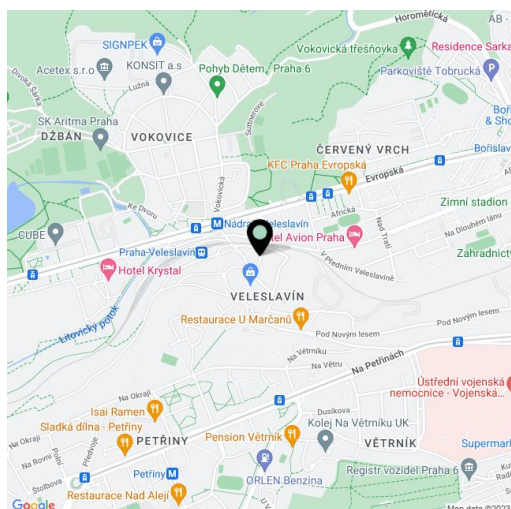
38 m<sup>2</sup>, Praha 6, Veveslavín, Pod Dvorem

Total area	44 m <sup>2</sup>
Floor area*	38 m <sup>2</sup>
Balcony	6 m <sup>2</sup>
Parking	Parking space in underground garages included.
Garage	Yes
Cellar	Yes
Service price	x
PENB	G
Reference number	22995
Available from	Immediately

Contemporary furnished 1-bedroom flat with a 6 m<sup>2</sup> balcony, on the 2nd floor with lift in a recently built residential project with underground parking. Situated next to a park, on the border of Veveslavín and Ořechovka residential neighborhoods, with quick access to the city center, and Nádraží Veveslavín metro station and trams just a few minute walk from the building. Green and quiet location, convenient to the airport and international schools in Prague 6.

The bright interior features a living room with a fully fitted open kitchen and access to the **balcony**, one bedroom, bathroom with bathtub, sink and toilet, and an entrance hall with a built-in wardrobe.

Floating floors and tiles, large windows, washer, dishwasher, microwave oven, TV. Basement unit available. Shared pram and bike storage in the building. Nicely landscaped green courtyard with a playground for children. One **garage parking** space included. Monthly deposit for service charges, water, heating and electricity CZK 2000/month. Available from March 2020.



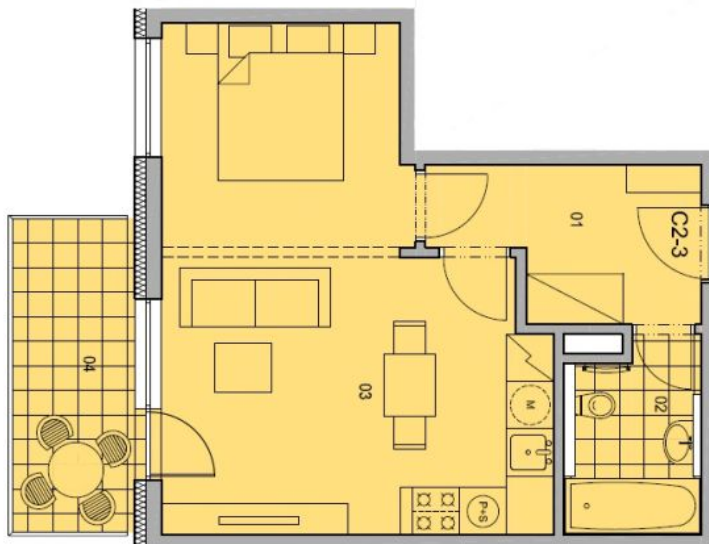
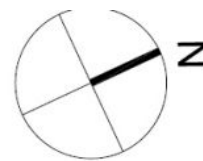
\* Area of the unit according to the Civil Code. The area consists of the sum total area of the entire unit bounded by perimeter walls.



# Apartment One-bedroom (2+kk)

38 m<sup>2</sup>, Praha 6, Veleslavin, Pod Dvorem

Rented



Č. MÍST. ROOM No.	NÁZEV MÍSTNOSTI ROOM	PLOCHA / AREA
01	PŘEDSÍŇ / FOYER	6,1 m <sup>2</sup>
02	KOUPELNA WC / BATHROOM WC	3,8 m <sup>2</sup>
03	OBYVACÍ POKOJ + KUCH. KOUT' / LIVING ROOM + KITCHEN	28,5 m <sup>2</sup>
	OSTATNÍ PLOCHA / OTHER AREA	0,9 m <sup>2</sup>
CELKOVÁ PLOCHA BYTU / TOTAL AREA OF ROOMS		37,3 m <sup>2</sup>
04	TERASA / TERRACE	6,3 m <sup>2</sup>
CELKOVÁ PODLAHOVÁ PLOCHA / TOTAL AREA		43,6 m <sup>2</sup>