



## House Four-bedroom (5+kk)

Rented

113 m<sup>2</sup>, Prague 5, Radotín, Otěšinská





## House Four-bedroom (5+kk)

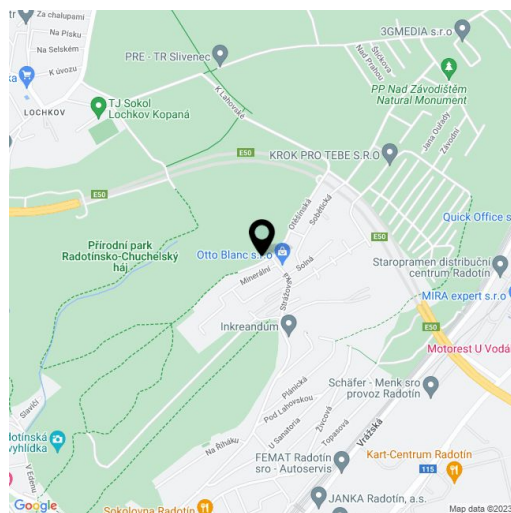
**Rented**113 m<sup>2</sup>, Prague 5, Radotín, Otěšinská

Plot	279 m <sup>2</sup>
Foot print	76 m <sup>2</sup>
Garden	203 m <sup>2</sup>
Parking	Two parking spaces available.
Cellar	-
PENB	B
Reference number	26910
Available from	Immediately

**Semidetached house with lovely views of the green surroundings located on a quiet street in a peaceful residential area in Radotín, on the edge of Slavičí Valley natural park, 15 minutes from Smíchovské nádraží train station. Radotín has complete amenities including a nursery and primary school, supermarket, restaurants and cinema. Easy access to a golf course, equestrian club and river spa. Bus stop in front of the building.**

The ground floor features living room with a fully fitted open kitchen and access to the terrace and garden, guest bedroom / office, guest toilet, laundry / boiler room, pantry, and entrance hall with built-in wardrobes. The first floor offers three bedrooms with built-in wardrobes, en-suite bathroom (walk-in shower, toilet), and family bathroom (bath, toilet).

Laminated and tile floors, security entry door, gas boiler, built-in wardrobes, blinds, washer, dryer, dishwasher, microwave oven, alarm, garden shed. Two parking spaces in front of the house available. Deposit for utilities CZK 4000 per month.

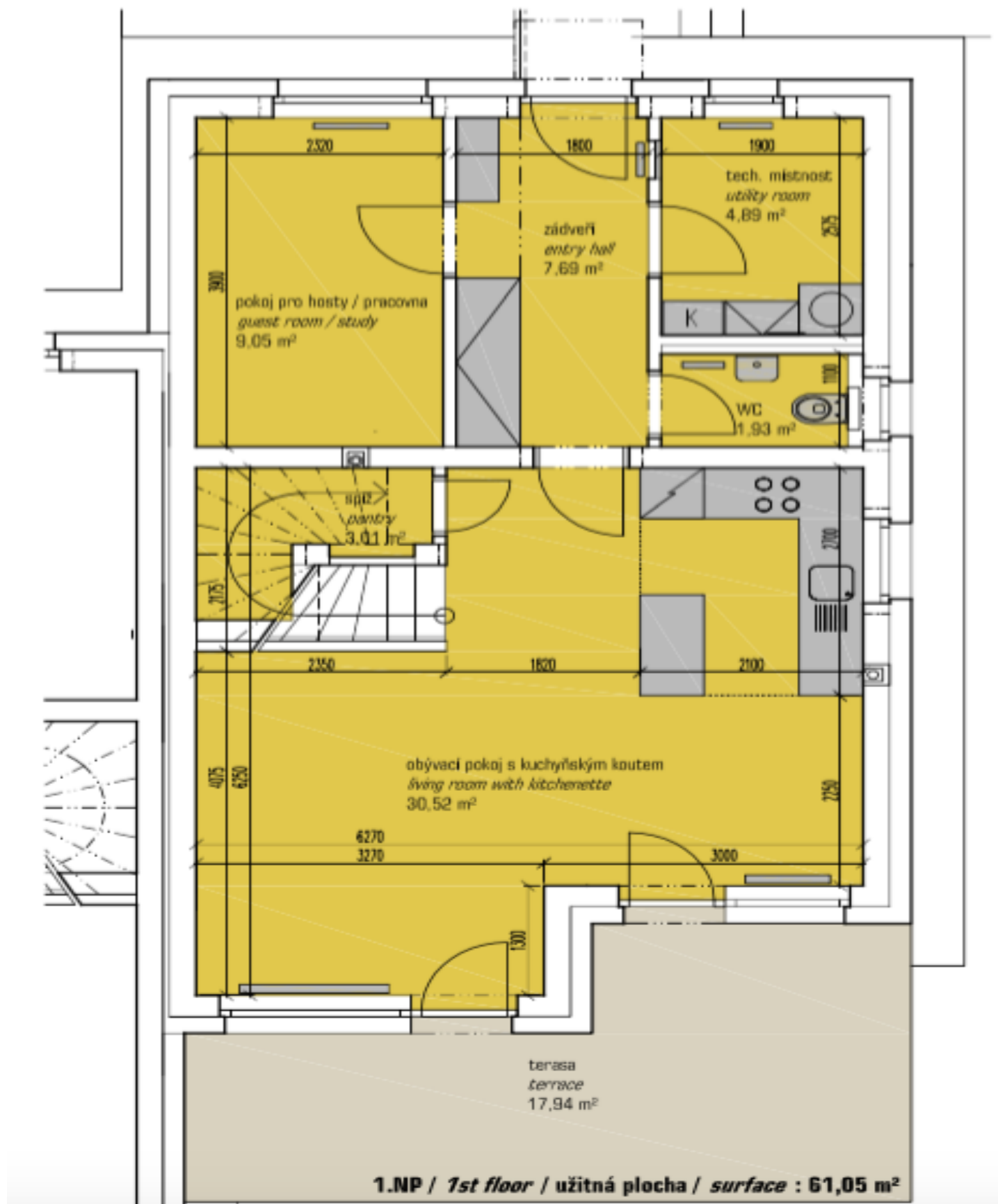




# House Four-bedroom (5+kk)

Rented

113 m<sup>2</sup>, Prague 5, Radotín, Otěšinská

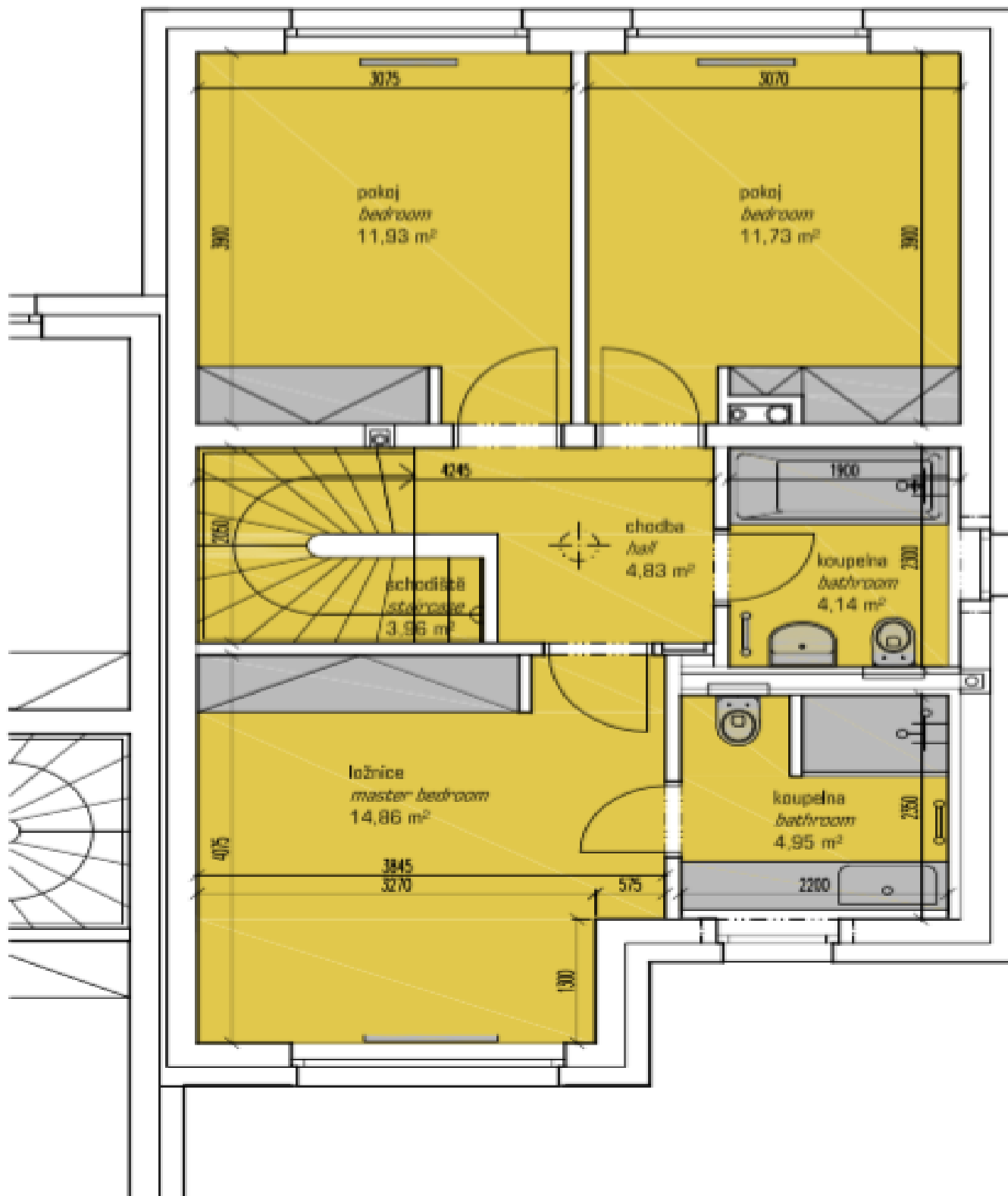




## House Four-bedroom (5+kk)

Rented

113 m<sup>2</sup>, Prague 5, Radotín, Otěšinská



**DŮM B / HOUSE B / celková užitná plocha / total surface : 113,49 m<sup>2</sup>**  
**2.NP / 2nd floor / užitná plocha / surface : 52,44 m<sup>2</sup>**