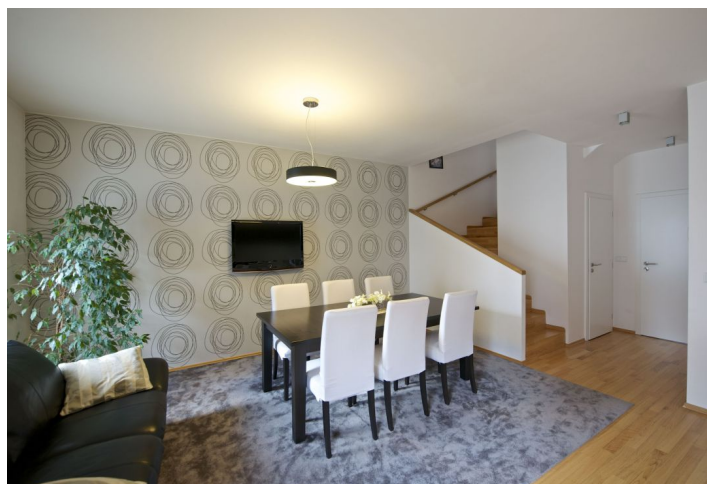




## House Four-bedroom (5+1)

Sold

212 m<sup>2</sup>, Praha-západ, Statenice, Zelená





## House Four-bedroom (5+1)

**Sold**212 m<sup>2</sup>, Praha-západ, Statenice, Zelená

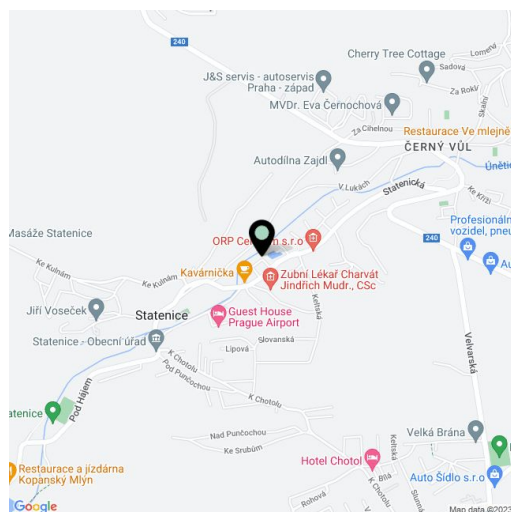
Usable area	212 m <sup>2</sup>
Plot	165 m <sup>2</sup>
Foot print	88 m <sup>2</sup>
Garden	77 m <sup>2</sup>
Floor area	196 m <sup>2</sup>
Terrace	16 m <sup>2</sup>
Parking	Garage for 1 car and 2 outdoor places
Garage	Yes
Cellar	-
PENB	G
Reference number	28452

This family row house with a garden in the unique Statenický Mlýn residential project located in the Únětický potok Valley is situated just 15 minutes by car from the center of Prague.

This four-bedroom house has three floors. The ground floor offers a spacious kitchen with a dining area equipped with quality built-in Siemens appliances, a utility room, a WC, and a storeroom. The kitchen has access to the terrace and garden. The first floor features a living room with large windows that provide an abundance of light as well as **beautiful views of the pond**. Also on this floor are 2 bedrooms and a bathroom. The last floor includes a study with a terrace with a view of the pond, a bedroom with an en-suite bathroom, and a terrace facing the garden. **Part of the house functions as a garage**, while another parking space is available in front of the house.

There are **wooden oak floors** in the entire house, wooden Euro windows, built-in wardrobes, a gas boiler. The house was built in 2008 and has a camera system connected to a security company. The residents have access to a full spectrum of amenities, such as a Žabka grocery store, a fitness center (free of charge only for residents), a playground, a kindergarten, as well as a nearby international school. Excellent access to the Václav Havel airport and to the Prague city center - 15 minutes by car to the **Dejvická metro station**. Close to a bus stop with regular service to Prague.

Interior 196.09 m<sup>2</sup>, terrace 16.02 m<sup>2</sup>, garden 77 m<sup>2</sup>, foot print 88 m<sup>2</sup>, plot 165 m<sup>2</sup>.

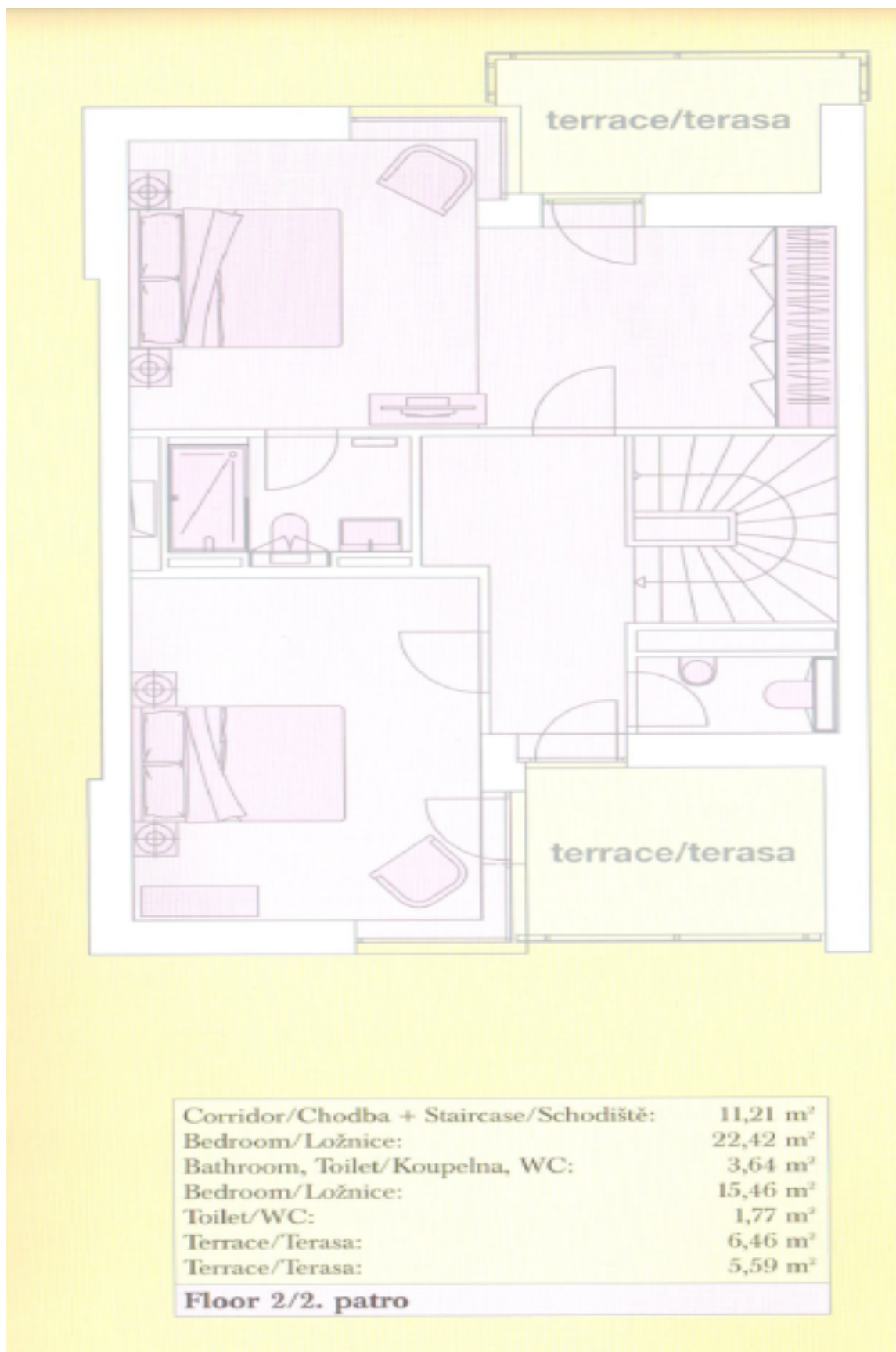




## House Four-bedroom (5+1)

212 m<sup>2</sup>, Praha-západ, Statenice, Zelená

Sold

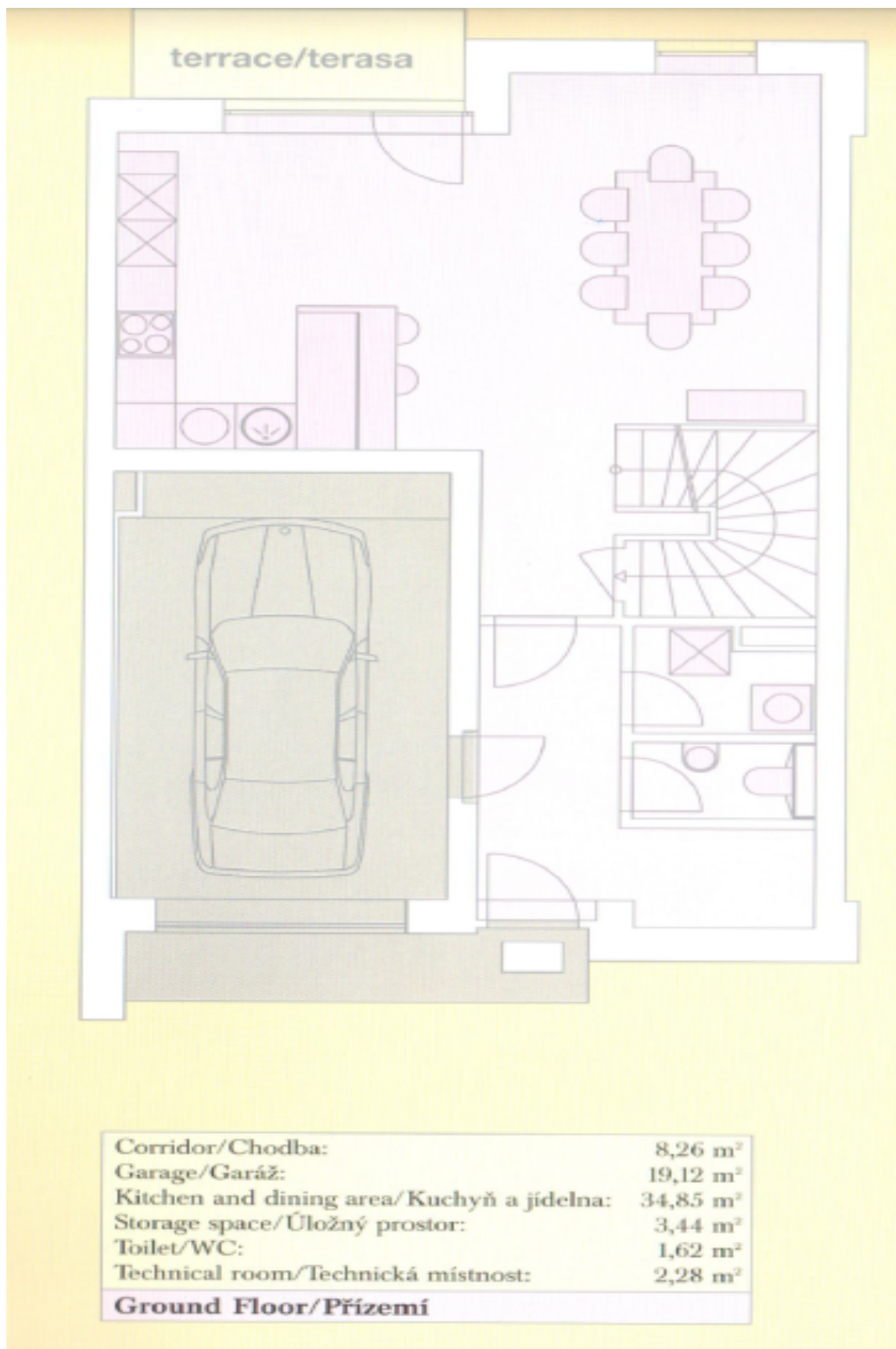




## House Four-bedroom (5+1)

212 m<sup>2</sup>, Praha-západ, Statenice, Zelená

**Sold**





## House Four-bedroom (5+1)

212 m<sup>2</sup>, Praha-západ, Statenice, Zelená

**Sold**

