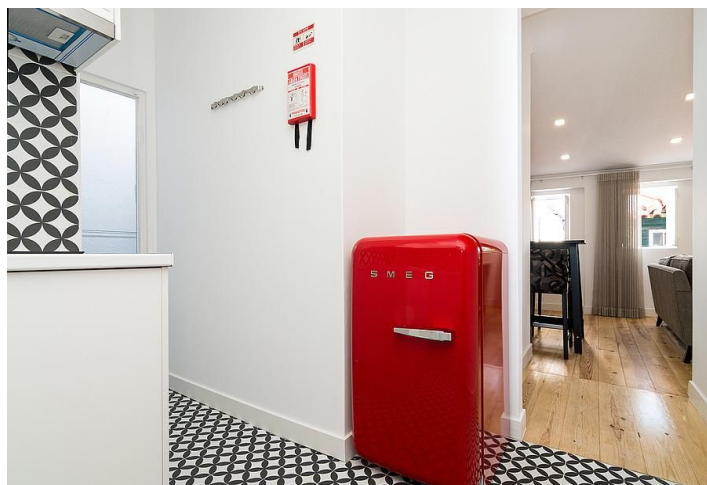
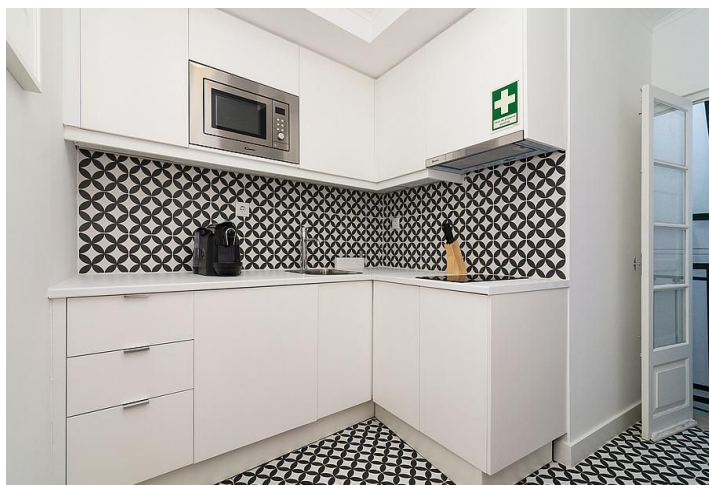
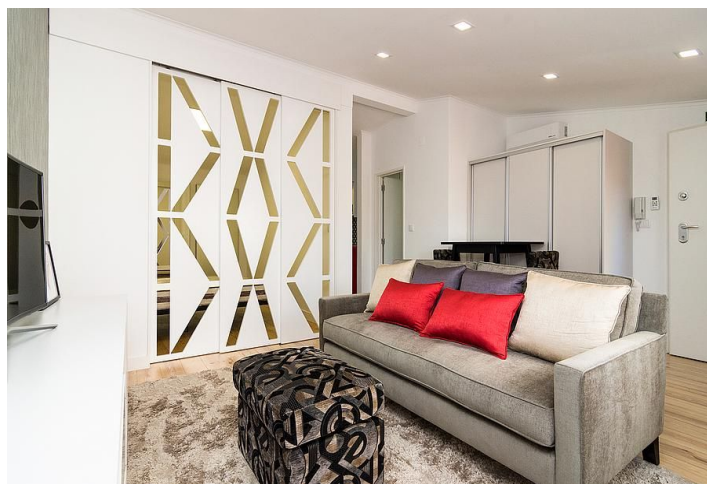




Apartment One-bedroom (2+kk)

€ 225 000 | CZK 5 657 625

42 m², Lisboa, Área Metropolitana de Lisboa, Alfama, Santa Maria Maior





Apartment One-bedroom (2+kk)

€ 225 000 | CZK 5 657 625

42 m², Lisboa, Área Metropolitana de Lisboa, Alfama, Santa Maria Maior

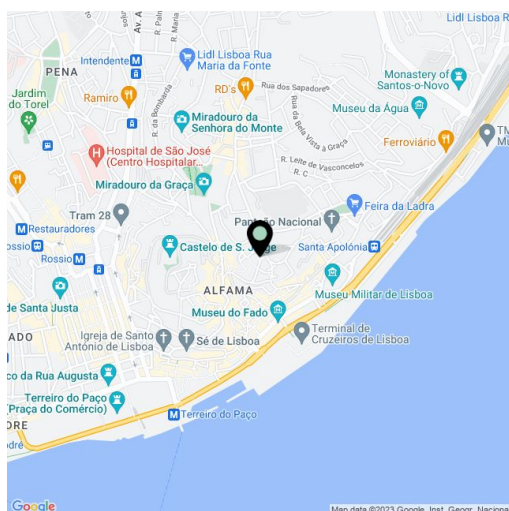
Total area	42 m ²
Parking	-
Cellar	-
PENB	G
Reference number	28877

This refurbished one-bedroom apartment is located in the heart of historic old Lisbon in the sought-after Alfama district, famous for its steep terrain with cobblestone streets lined with Old World facades leading to the Moorish São Jorge Castle.

The charming south-facing apartment offers a living room, a separate kitchen, a bedroom, and a bathroom (w/ shower). Features include air-conditioning and black & white designer tiles in the kitchen. The apartment is furnished and offers lovely views of the river and the terracotta rooftops of the historic center.

Fantastic opportunity to live in the historic core of Lisbon. The attractive apartment is ideal for holiday accommodation or for pleasant living for two.

Private gross area: 41.80 sq. m.



* Area of the unit according to the Civil Code. The area consists of the sum total area of the entire unit bounded by perimeter walls.