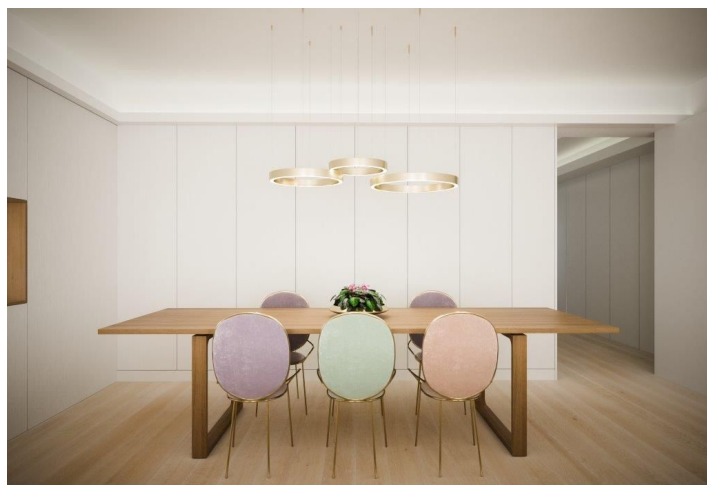
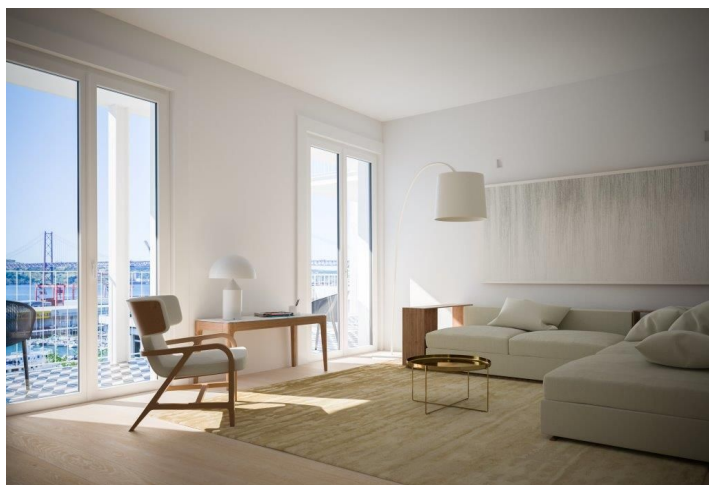




Apartment Two-bedroom (3+1)

€ 925 000 | CZK 23 453 375

116 m², Lisboa, Área Metropolitana de Lisboa, Estrela, Lapa





Apartment Two-bedroom (3+1)

€ 925 000 | CZK 23 453 375

116 m², Lisboa, Área Metropolitana de Lisboa, Estrela, Lapa

Total area	126 m ²
Floor area*	116 m ²
Terrace	10 m ²
Parking	-
Cellar	-
PENB	G
Reference number	28880

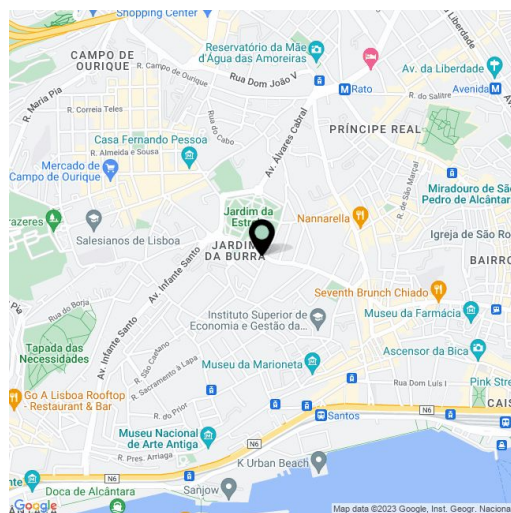
Gorgeous two-bedroom apartment in the new Presidente Arriaga building project, situated in the sought-after neighborhood of Estrela - Lapa on the Tagus River.

Linking the modern to the traditional, the Presidente Arriaga building is a non-standard **new project in the heart of Lisbon**. The unparalleled **façade is lined with handmade tiles** from the prestigious "Viúva Lamego" brand (more than 150 years old), designed by renowned ceramist Maria Ana Vasco Costa, making the facade and presentation of this elegant building unique. The apartment consists of a living room, a separate kitchen, **two ensuite bedrooms, a terrace** and more. Imagine enjoying **260 days of Lisbon sunshine on your private terrace** - in the Presidente Arriaga building, you can. What's more, the apartment & terrace offer **breathtaking views of the river**.

The apartment has thermal insulation, acoustic insulation, **air-conditioning**, etc. Equipment includes an oven, exhaust system, electric stove, dishwasher, fridge, microwave and washer & dryer. The building features **indoor parking and a lift**.

The riverside location of this unique building is simply put, magical. The neighborhood, Estrela - Lapa, is one of the **best areas in Lisbon** and is known for its preserved palaces (housing embassies), quiet atmosphere and sought-after reputation.

Private gross area: 126 sq. m.; Completion: 2019



* Area of the unit according to the Civil Code. The area consists of the sum total area of the entire unit bounded by perimeter walls.