



House Three-bedroom (4+kk)

Rented

190 m², Prague 6, Dejvice, Na Míčánce





House Three-bedroom (4+kk)

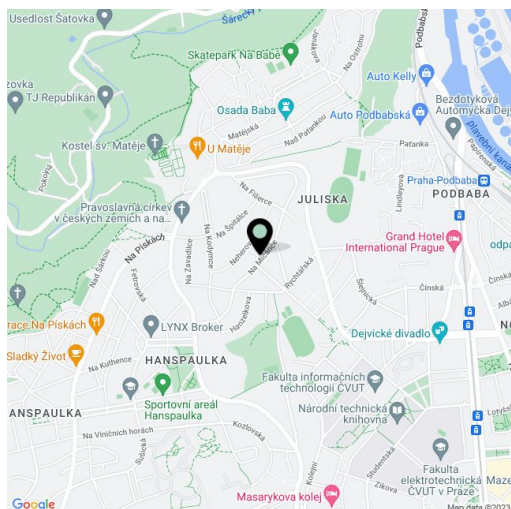
Rented190 m², Prague 6, Dejvice, Na Míčánce

Plot	295 m ²
Foot print	91 m ²
Garden	204 m ²
Parking	Single garage.
Garage	Yes
Cellar	Yes
PENB	G
Reference number	2908
Available from	Immediately

Three story 3-bedroom 2-bathroom townhouse with a garden in the prestigious Prague 6 neighborhood, Situated in a quiet residential neighborhood of Hanspaulka in close vicinity of the green Šárka Valley. Location with very good transportation connections - a few bus stops to Bořislavka and Hradčanská metro stations, a 15-20 min. drive to the city center, a short drive to the airport. Convenient to international schools, within walking distance of Juliska sports grounds.

Ground floor: shower room with toilet, guest bedroom / study, **winter garden** with stairs leading to the garden, garage access. First floor: open plan living room with dining area and a fully fitted kitchen and garden facing **balcony**. Second floor: 2 bedrooms, bathroom with a walk-in, bathtub and toilet, spacious **walk-in closet**, nice views of the Prague Castle. Basement: utility / laundry room including bathtub, washer and dryer, and storage.

Miele kitchen appliances, **solid wood parquet floors**, tiles, security entry door, blinds, video entry phone, telephone line, satellite connection, alarm, attic storage. Can be furnished at a higher rent. **Garage**. Utilities approx. CZK 6000/month.

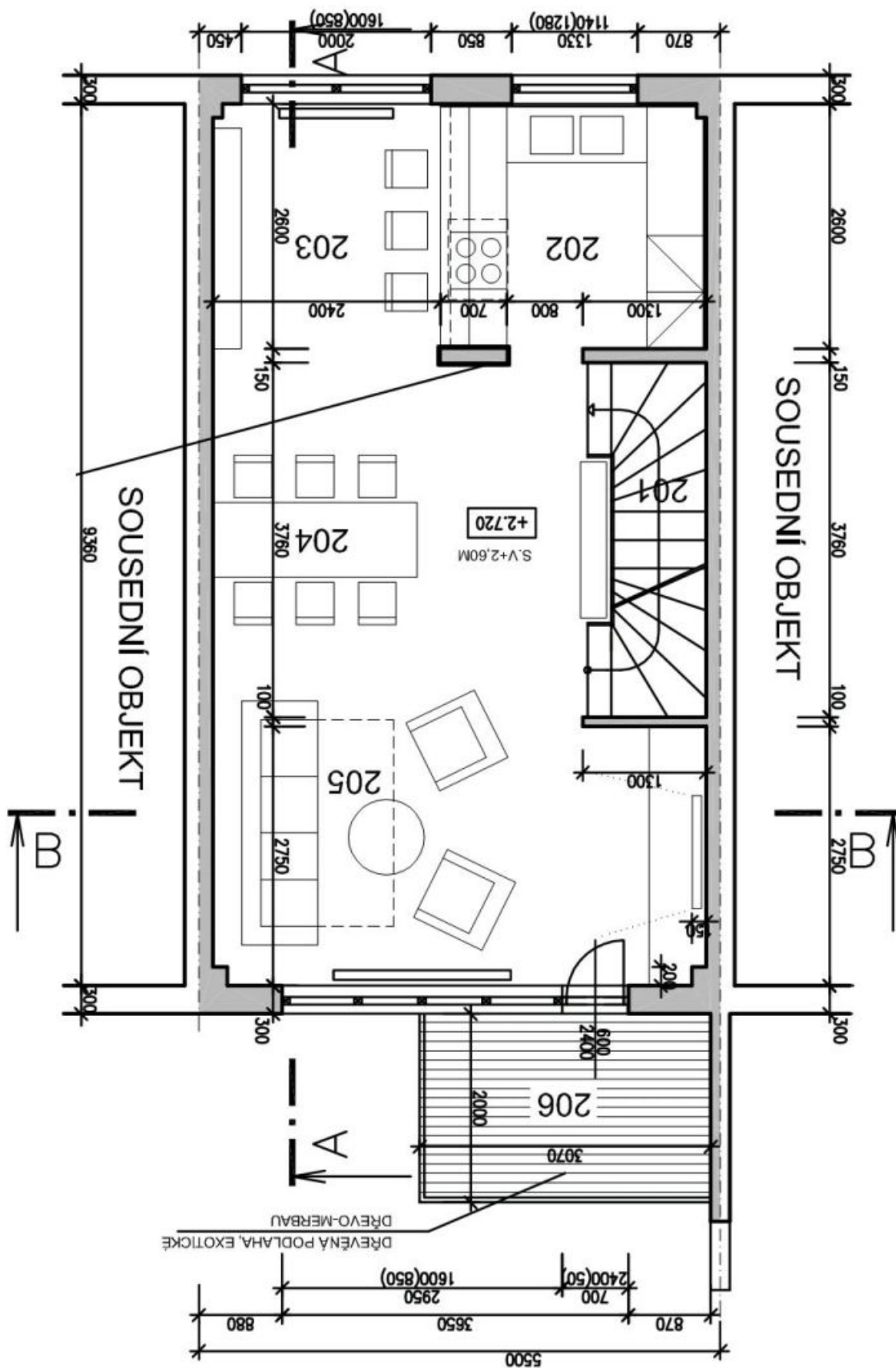




House Three-bedroom (4+kk)

Rented

190 m², Prague 6, Dejvice, Na Míčance

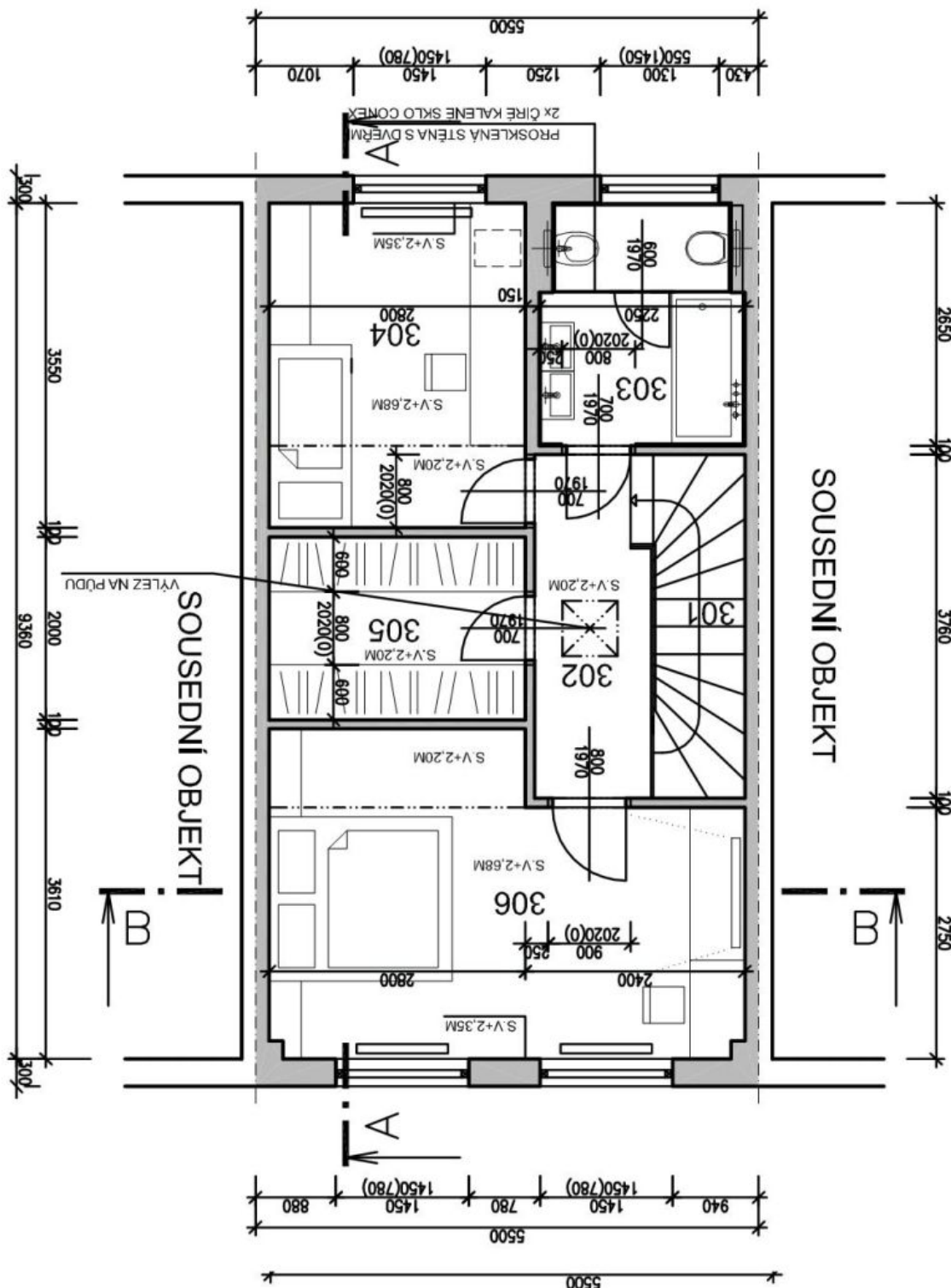




House Three-bedroom (4+kk)

Rented

190 m², Prague 6, Dejvice, Na Míčance

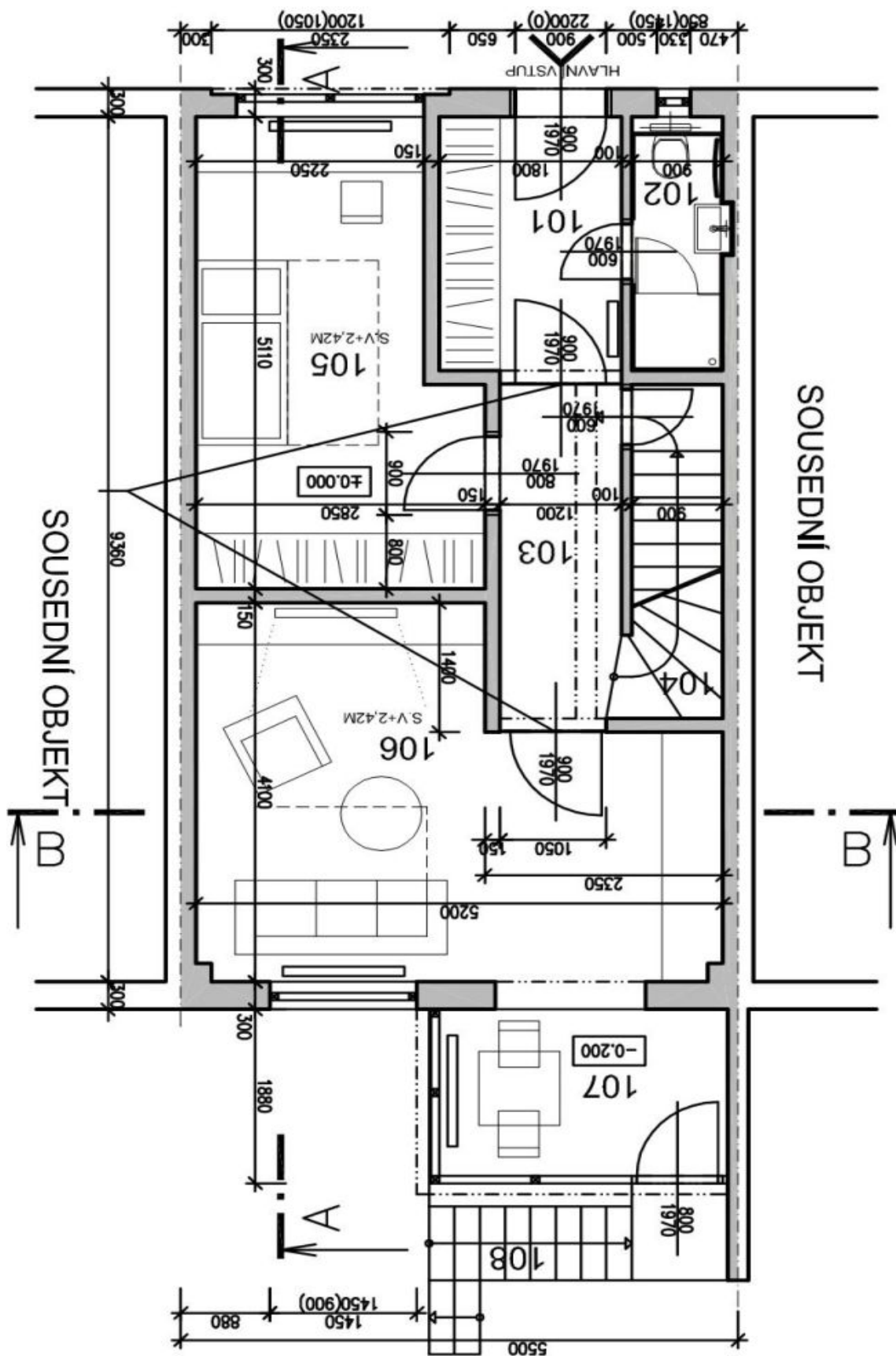




House Three-bedroom (4+kk)

Rented

190 m², Prague 6, Dejvice, Na Míčance





House Three-bedroom (4+kk)

190 m², Prague 6, Dejvice, Na Míčance

Rented

