



Apartment One-bedroom (2+kk)

Sold

56 m², Prague 10, Vršovice, Orelská





Apartment One-bedroom (2+kk)

Sold56 m², Prague 10, Vršovice, Orelská

Total area	58 m ²
Floor area*	56 m ²
Balcony	2 m ²
Parking	-
Cellar	Yes
PENB	G
Reference number	30887

This completely finished 1-bedroom apartment with a balcony in the [Orelská 13](#) reconstructed Art Nouveau building from 1911 is situated in a quiet section of the Prague neighborhood of Vršovice, a few steps from Vršovice Square or the iconic Krymská Street. The building offers carefully refurbished common areas with preserved original architectural features, such as loggia walls, a staircase railing, replicas of original casement windows (the internal wing has a single-glazed pane, the external wing has an insulated double-glazed pane), and replicas of original double-wing entrance doors. Planned completion for May 2019.

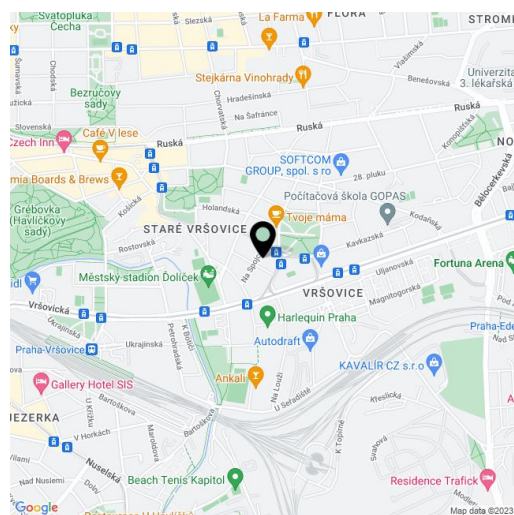
The layout of the 1st floor apartment facing south towards the street offers a spacious living room with a kitchen, a bedroom with space for a built-in wardrobe, a bathroom, and a foyer.

The apartment is offered in a **finished state**. Standards include solid wood floors, high quality tiles, impregnated brick walls, a **glased-in loft wall**, ornamental plasterwork, **marble window sills**, a custom-made **kitchen** with appliances, and a fully-equipped bathroom. The apartment comes with a **cellar**.

The neighborhood of Vršovice is undergoing a dynamic transformation, supported not only by the local administration, but also by a number of neighboring projects and initiatives. The most striking example of the new face of Vršovice is Krymská Street, which the New York Times called one of the 12 most popular European streets. Krymská Street and its surrounding area are filled with **purely local places** - from bistros, cafes, and home bakeries to an art house movie theater, yoga studio, and a variety of pop-up projects. All of this and more is just a few minutes' walk from the Orelská 13 Residence, as is the charming **Havličkovy Sady Park** with its own vineyard. On the opposite side, there is a **sports complex with a swimming pool or a shopping mall**. A **tram stop is 250 meters away** from the house and you can reach the center of Prague in a few minutes. By car, you can easily reach the South Connecting Road.

Total area 58.3 m², interior 54.6 m², balcony 2.3 m², cellar 1.9 m².

For more information about the project visit the website [Orelská13](#).



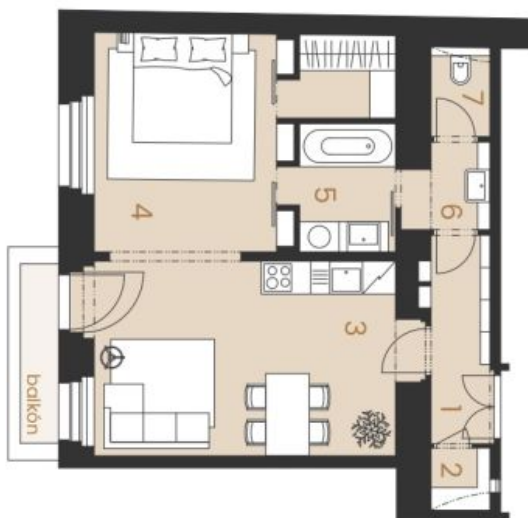
* Area of the unit according to the Civil Code. The area consists of the sum total area of the entire unit bounded by perimeter walls.



Apartment One-bedroom (2+kk)

56 m², Prague 10, Vršovice, Orelská

Sold



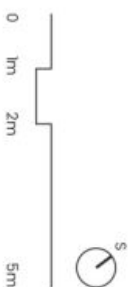
byt 2+kk | 21

2.NP

č.	místnost	m ²
1	chodba	4,2
2	komora	1,2
3	obýtná místnost s kuchyní	20,2
4	ložnice se šatnou	20,5
5+6	kaupelna	6,7
7	wc	1,8
plocha bytu celkem		54,6
plocha bytu celkem dle NOZ		58,3
balkón		2,3

svoboda&williams | CHRISTIE'S
INTERNATIONAL REAL ESTATE

Sdílíme podrobnou bytovou představenou dispozici řádkem "Bytu". Kuchyni sálá bílá a nřobýtná nejšou součástí dodávkř bytu, zřazeni je zřazeno pouze pro nřaznřní. Specifikače pro konkrétní, povinně sprovřij a nřazř vřloveni je přednřtem přilřij. "Standard nemovřitř".



www.orelskat3.cz

Nř Pevřřřne 2, 110 00 Praha 1
+420 257 328 281, +420 257 322 032
info@svoboda-williams.com