



House Four-bedroom (5+kk)

Ask for price

281 m², Prague 6, Dejvice, Pokojná





House Four-bedroom (5+kk)

[Ask for price](#)281 m², Prague 6, Dejvice, Pokojná

Total area	281 m ²
Plot	557 m ²
Foot print	159 m ²
Garden	398 m ²
Floor area	228 m ²
Terrace	53 m ²
Parking	Parking in the garage and on the paved area on the land
Garage	Yes
Cellar	-
PENB	B
Reference number	31609

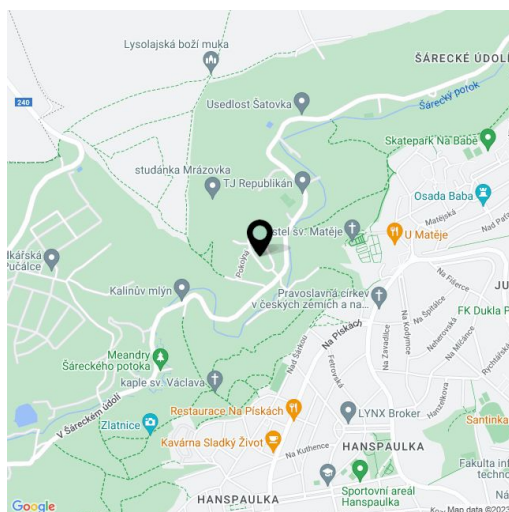
This newly-built bright and airy family house with an east-facing garden stands in the middle of the Šárka-Lysolaje nature park, in a place with a charming atmosphere and a beautiful view of the Church of St. Matthias.

The layout of the entrance level consists of a sunny living room with an adjoining garden terrace, a dining area, and a partly separate kitchen, a guest toilet, a utility room, and a corridor with access to the garage. The 1st floor is used as a **parent's suite**; there is a study, a bedroom with direct access to a bathroom with a separate toilet and a **preparation for a sauna**, a separate room (usable, for example, as a closet or another study), a gallery, and a terrace with an outdoor staircase to the garden. Upstairs, there are 3 bedrooms (1 with an en-suite bathroom) and a shared bathroom.

The high-quality facilities include large-format wooden windows, **oak floors**, **air conditioning**, a fireplace, underfloor heating, a central vacuum cleaner, and a preparation for security equipment. Parking is possible in the garage and on the paved area on the land. Final approval issued in 2018.

The unique location of **Tichá Šárka** offers perfect tranquillity, privacy, fresh air, and proximity to pure nature. All other necessities are a few minutes away by car or bus. A bus stop is nearby, the ride to the **Dejvická** metro station (line A) takes just 12 minutes. The ISP International School in Nebušice, the Global Preschool, or the airport are all within short driving distance. There are a lot of hiking paths in the surrounding forests, as well as bike trails, which lead to many popular tourist destinations.

Interior 228 m², terrace 53.3 m², built-up area 159 m², garden 398 m².

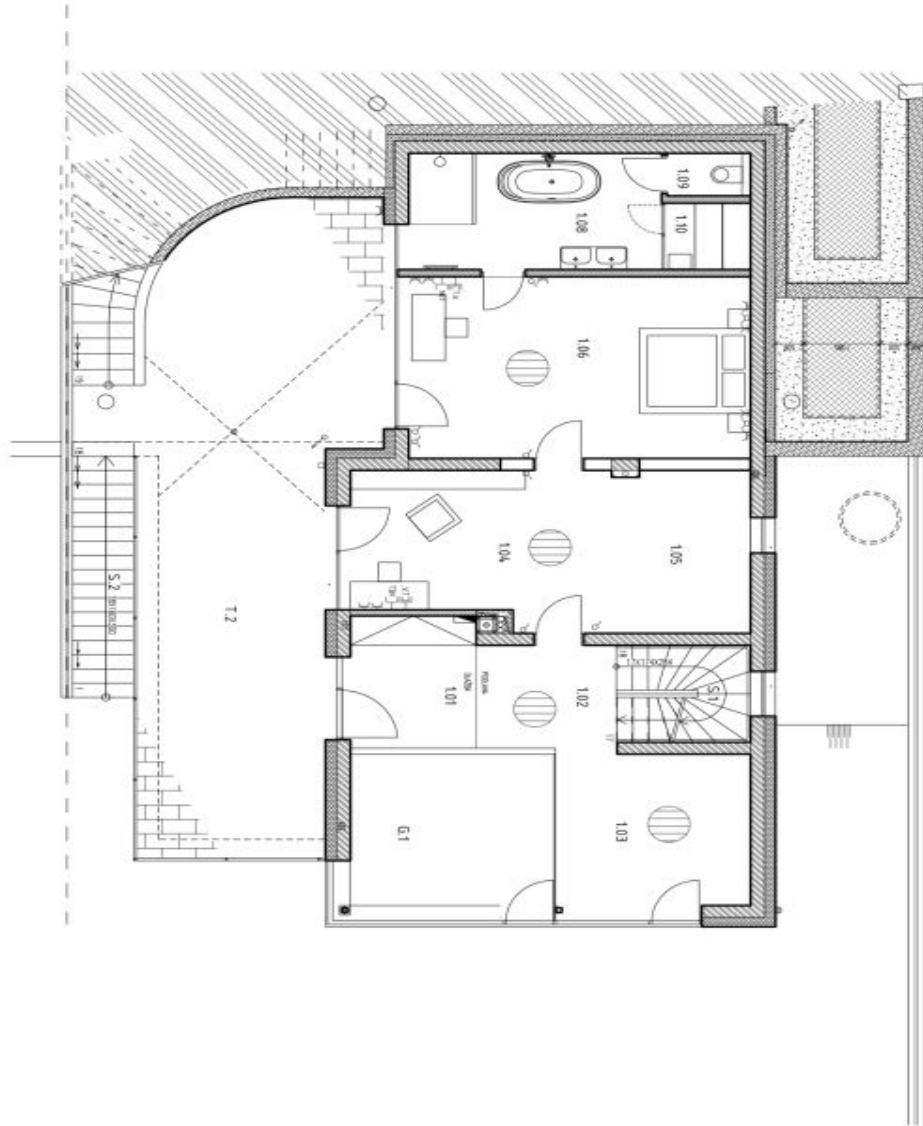




House Four-bedroom (5+kk)

281 m², Prague 6, Dejvice, Pokojná

Ask for price



LEGENDA VEŠTĚNÍ

Číslo	Obj. veštetí	Číslo	Název	Stav	Stav	Stav	Podlaží
107	2008	1,1	107	107	107	107	107
108	2008	5,1	108	108	108	108	108
109	1008	1,2	109	109	109	109	109
110	1008	4,4	110	110	110	110	110
106	1008	4,1	106	106	106	106	106
105	1008	1,3	105	105	105	105	105
104	1008	3,8	104	104	104	104	104
103	1008	1,2	103	103	103	103	103
102	1008	1,2	102	102	102	102	102
101	1008	1,1	101	101	101	101	101
100	1008	1,1	100	100	100	100	100
99	1008	1,1	99	99	99	99	99
98	1008	1,1	98	98	98	98	98
97	1008	1,1	97	97	97	97	97
96	1008	1,1	96	96	96	96	96
95	1008	1,1	95	95	95	95	95
94	1008	1,1	94	94	94	94	94
93	1008	1,1	93	93	93	93	93
92	1008	1,1	92	92	92	92	92
91	1008	1,1	91	91	91	91	91
90	1008	1,1	90	90	90	90	90

- LEGENDA VEŠTĚNÍ**
- 107 - 2008 - 1,1 - 107 - 107 - 107 - 107
 - 108 - 2008 - 5,1 - 108 - 108 - 108 - 108
 - 109 - 1008 - 1,2 - 109 - 109 - 109 - 109
 - 110 - 1008 - 4,4 - 110 - 110 - 110 - 110
 - 106 - 1008 - 4,1 - 106 - 106 - 106 - 106
 - 105 - 1008 - 1,3 - 105 - 105 - 105 - 105
 - 104 - 1008 - 3,8 - 104 - 104 - 104 - 104
 - 103 - 1008 - 1,2 - 103 - 103 - 103 - 103
 - 102 - 1008 - 1,2 - 102 - 102 - 102 - 102
 - 101 - 1008 - 1,1 - 101 - 101 - 101 - 101
 - 100 - 1008 - 1,1 - 100 - 100 - 100 - 100
 - 99 - 1008 - 1,1 - 99 - 99 - 99 - 99
 - 98 - 1008 - 1,1 - 98 - 98 - 98 - 98
 - 97 - 1008 - 1,1 - 97 - 97 - 97 - 97
 - 96 - 1008 - 1,1 - 96 - 96 - 96 - 96
 - 95 - 1008 - 1,1 - 95 - 95 - 95 - 95
 - 94 - 1008 - 1,1 - 94 - 94 - 94 - 94
 - 93 - 1008 - 1,1 - 93 - 93 - 93 - 93
 - 92 - 1008 - 1,1 - 92 - 92 - 92 - 92
 - 91 - 1008 - 1,1 - 91 - 91 - 91 - 91
 - 90 - 1008 - 1,1 - 90 - 90 - 90 - 90

NOVOSTAVBA DVOU RODINNÝCH DOMŮ V DVORNÉ ŠARŽI

SEVA

SO 01: PŮDORYS 1NP

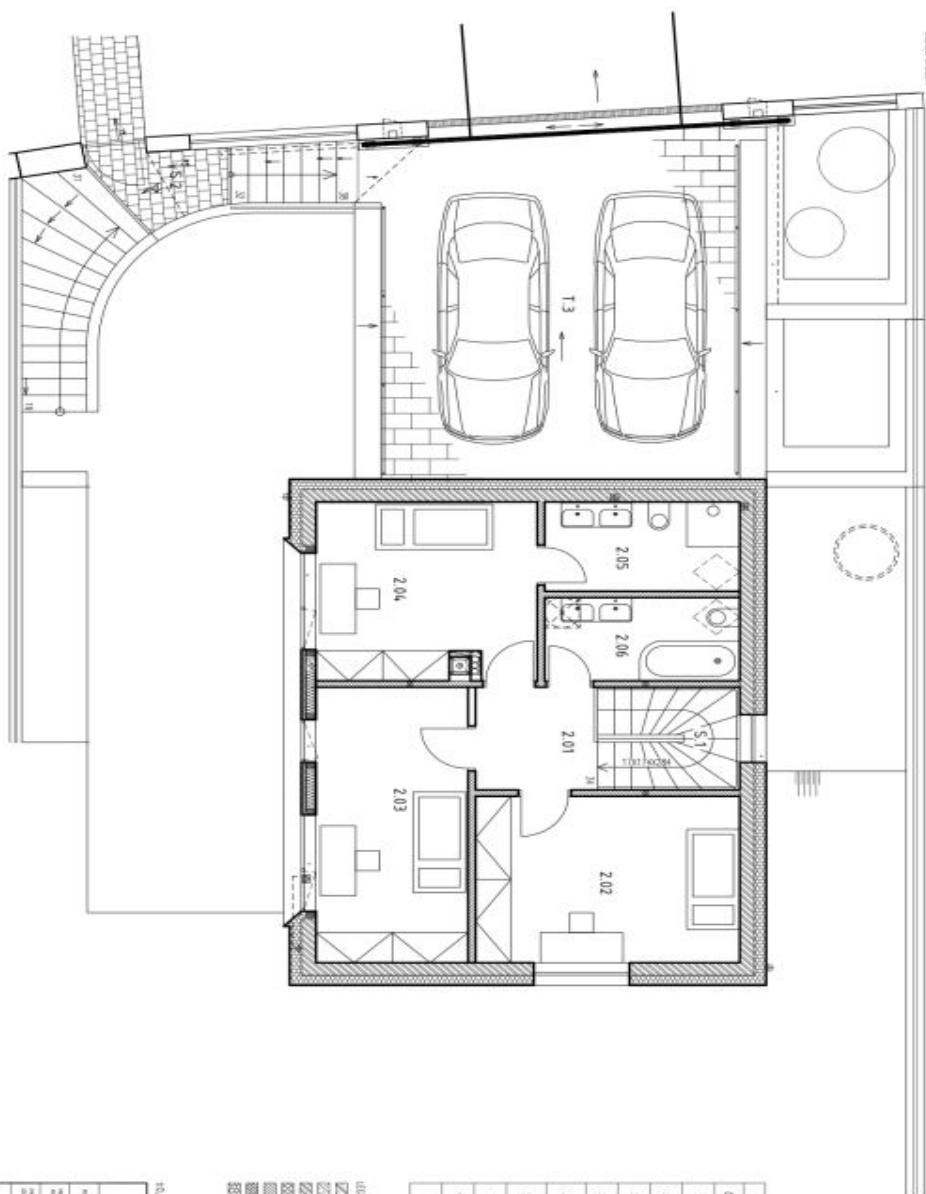
1:100



House Four-bedroom (5+kk)

Ask for price

281 m², Prague 6, Dejvice, Pokojná



LEGENDA MATERIÁLŮ

- 12121212** NÁSTĚNÉ POKRYTKY
- 11111111** POKRYVĚ
- 00000000** DĚŘEVĚNÝ HODÍCÍ ST. BROKOVY 1,25x 8x
- 00000000** DĚŘEVĚNÝ HODÍCÍ ST. BROKOVY 1,25x 8x
- 00000000** DĚŘEVĚNÝ HODÍCÍ ST. BROKOVY 1,25x 8x
- 00000000** DĚŘEVĚNÝ HODÍCÍ ST. BROKOVY 1,25x 8x
- 00000000** DĚŘEVĚNÝ HODÍCÍ ST. BROKOVY 1,25x 8x

LEGENDA MATERIÁLŮ

- 00000000** POKRYVĚ
- 00000000** POKRYVĚ
- 00000000** POKRYVĚ
- 00000000** POKRYVĚ
- 00000000** POKRYVĚ
- 00000000** POKRYVĚ

Číslo	Účel místnosti	Podlahová plocha (m ²)	Plošná	Stěhy	Strop	Podhled
2.01	HAI	4.2	1.07	OVHRA	OVHRA	OVHRA
2.02	OKNEK 1	14.53	1.07	OVHRA	OVHRA	OVHRA
2.03	OKNEK 1	14.22	1.07	OVHRA	OVHRA	OVHRA
2.04	OKNEK 1	11.16	1.07	OVHRA	OVHRA	OVHRA
2.05	OKNEK 1	14.22	1.07	OVHRA	OVHRA	OVHRA
2.06	OKNEK 1	11.16	1.07	OVHRA	OVHRA	OVHRA
2.07	OKNEK 1	11.16	1.07	OVHRA	OVHRA	OVHRA
2.08	OKNEK 1	14.22	1.07	OVHRA	OVHRA	OVHRA
2.09	OKNEK 1	11.16	1.07	OVHRA	OVHRA	OVHRA
2.10	OKNEK 1	14.22	1.07	OVHRA	OVHRA	OVHRA
2.11	OKNEK 1	11.16	1.07	OVHRA	OVHRA	OVHRA
2.12	OKNEK 1	14.22	1.07	OVHRA	OVHRA	OVHRA
2.13	OKNEK 1	11.16	1.07	OVHRA	OVHRA	OVHRA
2.14	OKNEK 1	14.22	1.07	OVHRA	OVHRA	OVHRA
2.15	OKNEK 1	11.16	1.07	OVHRA	OVHRA	OVHRA
2.16	OKNEK 1	14.22	1.07	OVHRA	OVHRA	OVHRA
2.17	OKNEK 1	11.16	1.07	OVHRA	OVHRA	OVHRA
2.18	OKNEK 1	14.22	1.07	OVHRA	OVHRA	OVHRA
2.19	OKNEK 1	11.16	1.07	OVHRA	OVHRA	OVHRA
2.20	OKNEK 1	14.22	1.07	OVHRA	OVHRA	OVHRA
2.21	OKNEK 1	11.16	1.07	OVHRA	OVHRA	OVHRA
2.22	OKNEK 1	14.22	1.07	OVHRA	OVHRA	OVHRA
2.23	OKNEK 1	11.16	1.07	OVHRA	OVHRA	OVHRA
2.24	OKNEK 1	14.22	1.07	OVHRA	OVHRA	OVHRA
2.25	OKNEK 1	11.16	1.07	OVHRA	OVHRA	OVHRA
2.26	OKNEK 1	14.22	1.07	OVHRA	OVHRA	OVHRA
2.27	OKNEK 1	11.16	1.07	OVHRA	OVHRA	OVHRA
2.28	OKNEK 1	14.22	1.07	OVHRA	OVHRA	OVHRA
2.29	OKNEK 1	11.16	1.07	OVHRA	OVHRA	OVHRA
2.30	OKNEK 1	14.22	1.07	OVHRA	OVHRA	OVHRA
2.31	OKNEK 1	11.16	1.07	OVHRA	OVHRA	OVHRA
2.32	OKNEK 1	14.22	1.07	OVHRA	OVHRA	OVHRA
2.33	OKNEK 1	11.16	1.07	OVHRA	OVHRA	OVHRA
2.34	OKNEK 1	14.22	1.07	OVHRA	OVHRA	OVHRA
2.35	OKNEK 1	11.16	1.07	OVHRA	OVHRA	OVHRA
2.36	OKNEK 1	14.22	1.07	OVHRA	OVHRA	OVHRA
2.37	OKNEK 1	11.16	1.07	OVHRA	OVHRA	OVHRA
2.38	OKNEK 1	14.22	1.07	OVHRA	OVHRA	OVHRA
2.39	OKNEK 1	11.16	1.07	OVHRA	OVHRA	OVHRA
2.40	OKNEK 1	14.22	1.07	OVHRA	OVHRA	OVHRA
2.41	OKNEK 1	11.16	1.07	OVHRA	OVHRA	OVHRA
2.42	OKNEK 1	14.22	1.07	OVHRA	OVHRA	OVHRA
2.43	OKNEK 1	11.16	1.07	OVHRA	OVHRA	OVHRA
2.44	OKNEK 1	14.22	1.07	OVHRA	OVHRA	OVHRA
2.45	OKNEK 1	11.16	1.07	OVHRA	OVHRA	OVHRA
2.46	OKNEK 1	14.22	1.07	OVHRA	OVHRA	OVHRA
2.47	OKNEK 1	11.16	1.07	OVHRA	OVHRA	OVHRA
2.48	OKNEK 1	14.22	1.07	OVHRA	OVHRA	OVHRA
2.49	OKNEK 1	11.16	1.07	OVHRA	OVHRA	OVHRA
2.50	OKNEK 1	14.22	1.07	OVHRA	OVHRA	OVHRA

NOVOSTAVBA DVOU RODINNÝCH DOMŮ V DVORČEKÉ ŠARCE

SEWA

Projektant: SEWA, s.r.o. - INŽENÝRSKÉ ZNP

Objekt: SO 01 - PŮDORYS ZNP

Číslo: 05