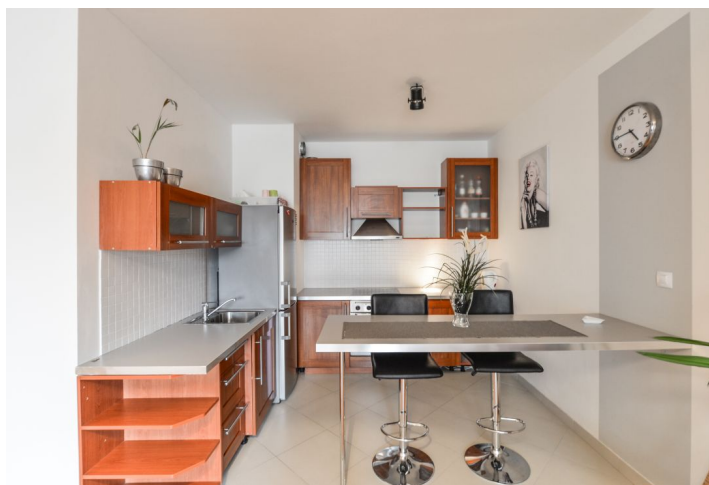
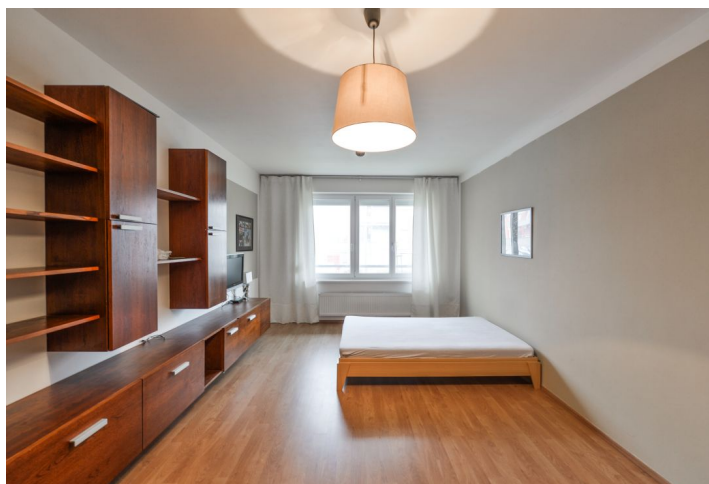




## Apartment One-bedroom (2+kk)

Sold

65 m<sup>2</sup>, Prague 5, Zličín, Sazovická





## Apartment One-bedroom (2+kk)

**Sold**65 m<sup>2</sup>, Prague 5, Zličín, Sazovická

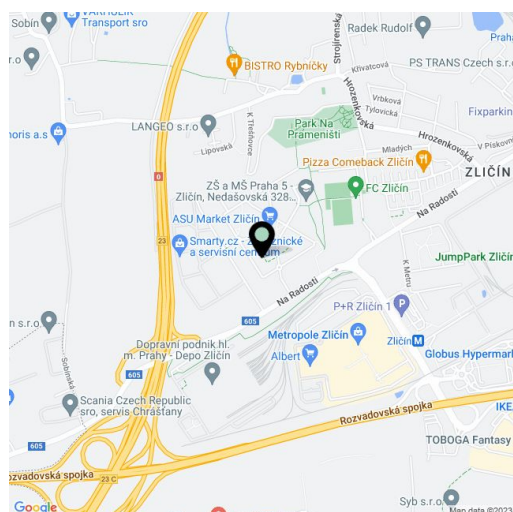
Total area	65 m <sup>2</sup>
Parking	250 000
Cellar	Yes
Service price	3 000 CZK monthly
PENB	C
Reference number	31709

**Bright and spacious 1-bedroom apartment in a new Central Group residential project in Zličín with a parking space and a cellar.**

The layout of this ground floor apartment consists of an entrance hall with access to the living room, which is connected to the kitchen, a bedroom, a separate bathroom, and a toilet. **The kitchen is fully equipped**, including a hob, an oven, and a hood. The spacious bathroom with a bathtub boasts bright, large-format tiles. Laminate floors throughout the apartment. Heating is by a **remote controlled gas boiler** in the building. The apartment is equipped with a **Jablotron security system** as well as outdoor **safety blinds**. A built-in wardrobe provides enough storage space in the hall.

The apartment is situated in an area with good civic amenities, yet a close to nature. Within walking distance is the **Metropole Zličín** shopping center. A **children's playground** is located in front of the house, and the **Na Prameni Park** is close-by. Nearby, there is also a **golf resort** and the extensive **Košíře-Motol nature park**, where you can enjoy sports activities or walks. It is about 8 minutes away to the nearest **metro station, Zličín**, from where you can reach the city center (Můstek metro station) within 22 minutes.

Usable area 64.9 m<sup>2</sup>, cellar 4.7 m<sup>2</sup>.



\* Area of the unit according to the Civil Code. The area consists of the sum total area of the entire unit bounded by perimeter walls.



# Apartment One-bedroom (2+kk)

Sold

65 m², Prague 5, Zličín, Sazovická

