



Apartment Two-bedroom (3+kk)

Sold

100 m², Prague 5, Košíře, U Vojanky





Apartment Two-bedroom (3+kk)

Sold100 m², Prague 5, Košíře, U Vojanky

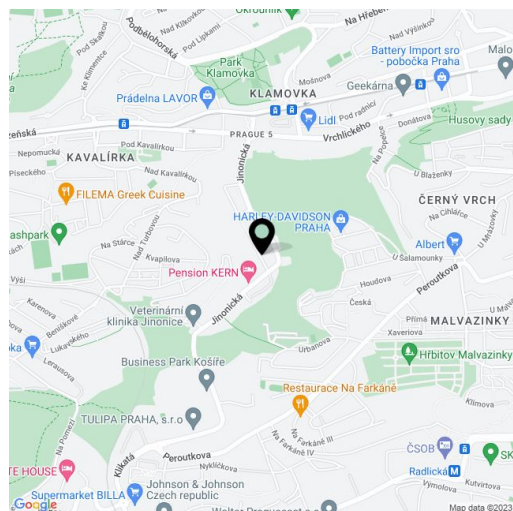
Total area	106 m ²
Floor area*	100 m ²
Terrace	6 m ²
Parking	Garage parking place
Garage	Yes
Cellar	Yes
Service price	4 966 CZK monthly
PENB	C
Reference number	31805

This spacious and airy apartment with a terrace and a garage parking space (for extra cost) is situated in a building from 2012. It is located in a quiet part of Prague 5 - Košíře, a neighborhood with many villas from the 1930s and a full spectrum of civic amenities. Anděl, with a shopping center and many restaurants, is a 5-minute ride by public transport or car.

The layout of this apartment on the 5th floor consists of a corner living room with a kitchen and a **south-facing terrace**, two bedrooms, one of which has an en-suite bathroom, an additional bathroom, and a closet/laundry room. Facilities include **wooden floors**, wooden double-glazed Euro windows and **remote control exterior blinds**, a natural stone wall in the living room and a fully equipped kitchen with a central island. There are large-format tiles with underfloor heating in the bathrooms and built-in wardrobes in the hallway. **The obligation to buy a garage parking space for an additional fee of CZK 590,000.**

There are several sports opportunities nearby: the golf course in Motol or the Cibulka sports center with tennis and squash courts. Excellent accessibility to the German school, the French lyceum, and international schools in Prague 6.

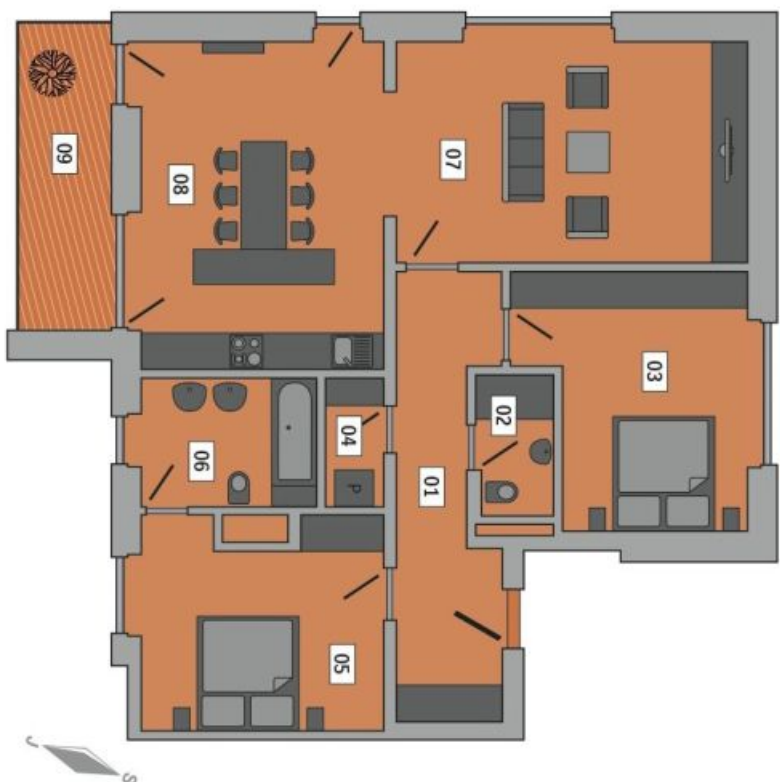
Interior 99.89 m², terrace 6.42 m², cellar 6.41 m².



* Area of the unit according to the Civil Code. The area consists of the sum total area of the entire unit bounded by perimeter walls.

**Apartment Two-bedroom (3+kk)**100 m², Prague 5, Košíře, U Vojanky**Sold****Rezidence POD BERTRAMKOU**

Vytříbený styl bydlení.

**Byt č. 6.1/3+kk**

Byt	6.1
Číslo bytu	6.NP
Podlaží	3+kk
Typ	3+kk
Cistá plocha bytu	99,89 m ²
Terasa	6,42 m ²
Plocha celkem	106,31 m ²

Místnosti	
01 Chodba	11,95 m ²
02 Koupelna	2,98 m ²
03 Pokoj	15,77 m ²
04 Prádelna	2,19 m ²
05 Pokoj	13,65 m ²
06 Koupelna a wc	6,45 m ²
07 Obývací pokoj	22,83 m ²
08 Kuchyň a jídelna	24,07 m ²
09 Terasa	6,42 m ²

