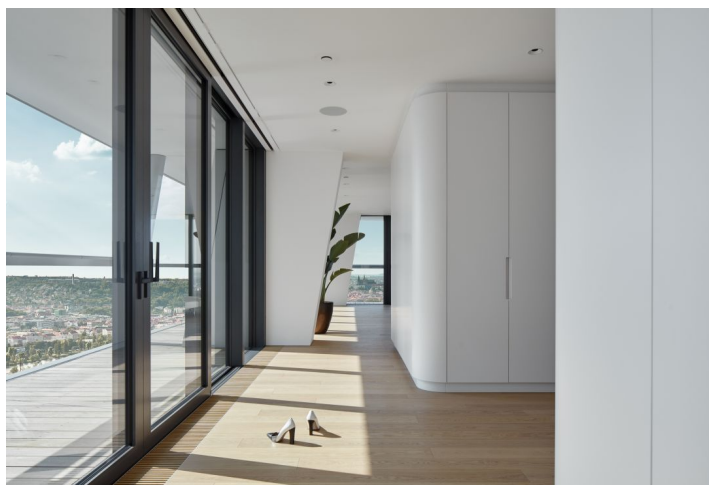
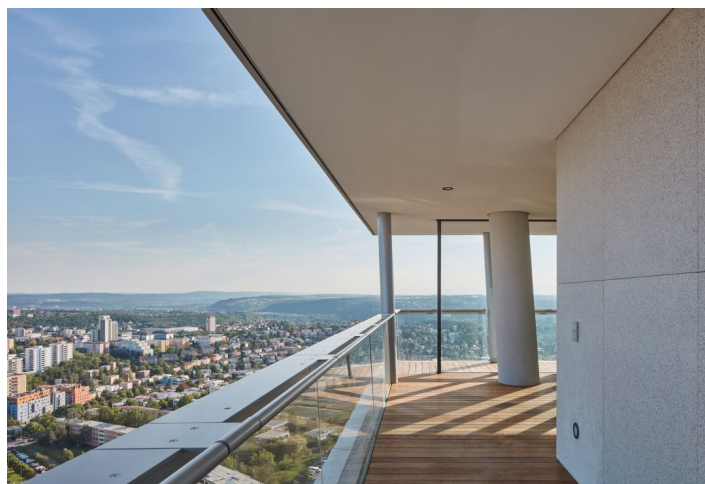




Apartment Four-bedroom (5+1)

Ask for price

339 m², Prague 4, Krč, Milevská





Apartment Four-bedroom (5+1)

[Ask for price](#)339 m², Prague 4, Krč, Milevská

Total area	597 m ²
Floor area*	339 m ²
Terrace	258 m ²
Parking	Garage for 4 cars and 1 separate space
Garage	Yes
Cellar	Yes
PENB	A
Reference number	31816

Western Penthouse

This unique penthouse with a 360° rooftop terrace with a private pool takes up the top 3 floors of the western tower of V TOWER, Prague, the tallest residential building in the Czech Republic.

This three-story penthouse with a total floor area of 597.1 sq. m. boasts an airy layout, logically separating the private from the day zone. On the 28th floor, there is an entrance hall with a private elevator that stops at all three levels, an impressive staircase leading to the next floor, 3 bedrooms with ensuite bathrooms (2 with walk-in closets), a closet, and 2 terraces. Upstairs, there is a generous living space with access to a small terrace, and an adjoining kitchen and dining room connected to the 50-meter south-facing terrace. On the same floor, there is a study, a bathroom, 2 closets, and a separate toilet. The third floor of the penthouse, with an outdoor staircase as well as an elevator, includes an over-170 sq. m. rooftop terrace with a stainless steel pool and unobstructed views of Prague and its surroundings.

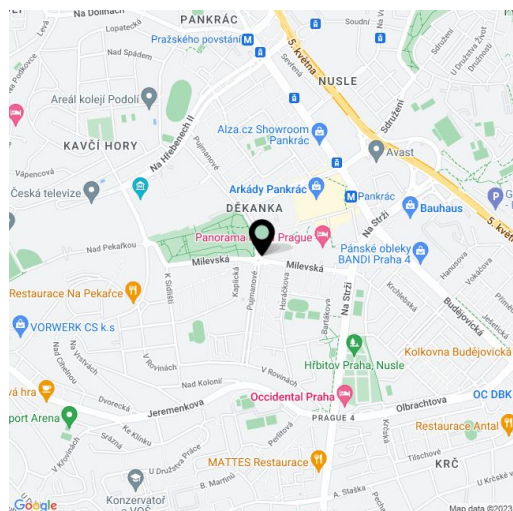
A feeling of complete freedom and privacy is guaranteed not only by its elevated location of 266 meters above sea level, but also by its high-standard noise-reducing walls and high-quality noise control measures built into the façade. Clean air and a comfortable temperature are guaranteed by an air exchange system and state-of-the-art natural air conditioning. Large-format windows provide plenty of daylight and panoramic views of the city. In addition, thanks to the building's unique design, each room has access to a balcony or terrace. To ensure the comfort of its residents, the apartment is fully furnished with pieces by the traditional Italian Molteni brand, which has been making high-quality furniture since 1934.

V TOWER, Prague offers the same superior level of comfort as Manhattan and London luxury skyscrapers. Residents will be able to enjoy a wide range of high-level services, including a 24hr reception and technical management, concierge services, a spa and wellness area, a gym, a private cinema with a DOLBY Atmos audio system, and much more. The penthouse comes with a private garage for 4 full-size cars, 1 separate parking space, and 1 electric car charging station. The entire building boasts first-class technologies and materials. Designed by experts from all around the world, this V-shaped architectural landmark is a celebrated addition to the Prague skyline.

Total area 339.4 m², terraces 257.7 m².

For more information, please visit the www.vtowerpenthouse.com website.

In addition to regular property viewings, we also offer **real-time video**



* Area of the unit according to the Civil Code. The area consists of the sum total area of the entire unit bounded by perimeter walls.



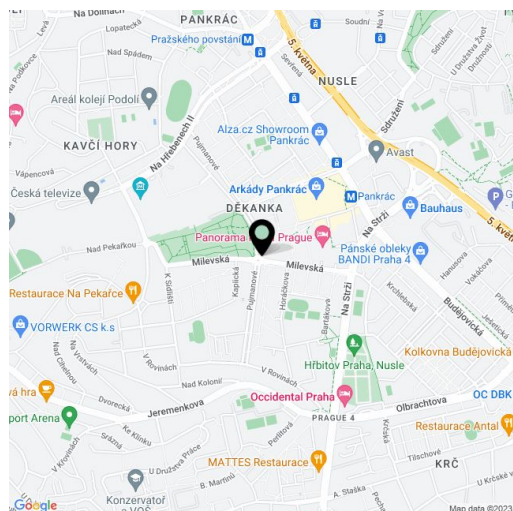
Apartment Four-bedroom (5+1)

Ask for price

339 m², Prague 4, Krč, Milevská

viewings via WhatsApp, FaceTime, Messenger, Skype, and other apps.

Total area	597 m ²
Floor area*	339 m ²
Terrace	258 m ²
Parking	Garage for 4 cars and 1 separate space
Garage	Yes
Cellar	Yes
PENB	A
Reference number	31816



* Area of the unit according to the Civil Code. The area consists of the sum total area of the entire unit bounded by perimeter walls.



Apartment Four-bedroom (5+1)

Ask for price

339 m², Prague 4, Krč, Milevská

TOWER PRAGUE
VITĚZSKÁ KAVARNA

ZP2
5+1

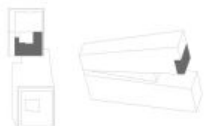
NAOZEŇNÍ
29.
PÓDLAŽÍ 29TH FLOOR

3 LOŽNICE
BEDROOM

KOUPELNY / BATHS 3

CELKOVÁ PODLAHOVÁ PLOCHA BYTU 339,4 m²
TOTAL APARTMENT AREA

257,7 m² CELKOVÁ PLOCHA TERAS
TOTAL TERRACE AREA





Apartment Four-bedroom (5+1)

339 m², Prague 4, Krč, Milevská

Ask for price

TOWER PRAGUE
VITĚZSKÁ

ZP2
5+1

NADZEMNÍ
PODLAŽÍ / SOUTH FLOOR:
OBÝVACÍ POKOJ
LIVING ROOM

PRACOVNÁ / STUDY ROOM
KOUPELNY / BATHS 1,5

CELKOVÁ PODLAŽOVÁ PLOCHA BYTU 339,4 m²
TOTAL APARTMENT AREA

257,7 m² CELKOVÁ PLOCHA TERAS
TOTAL TERRACE AREA

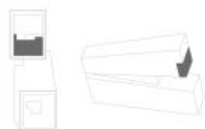




Apartment Four-bedroom (5+1)

Ask for price

339 m², Prague 4, Krč, Milevská

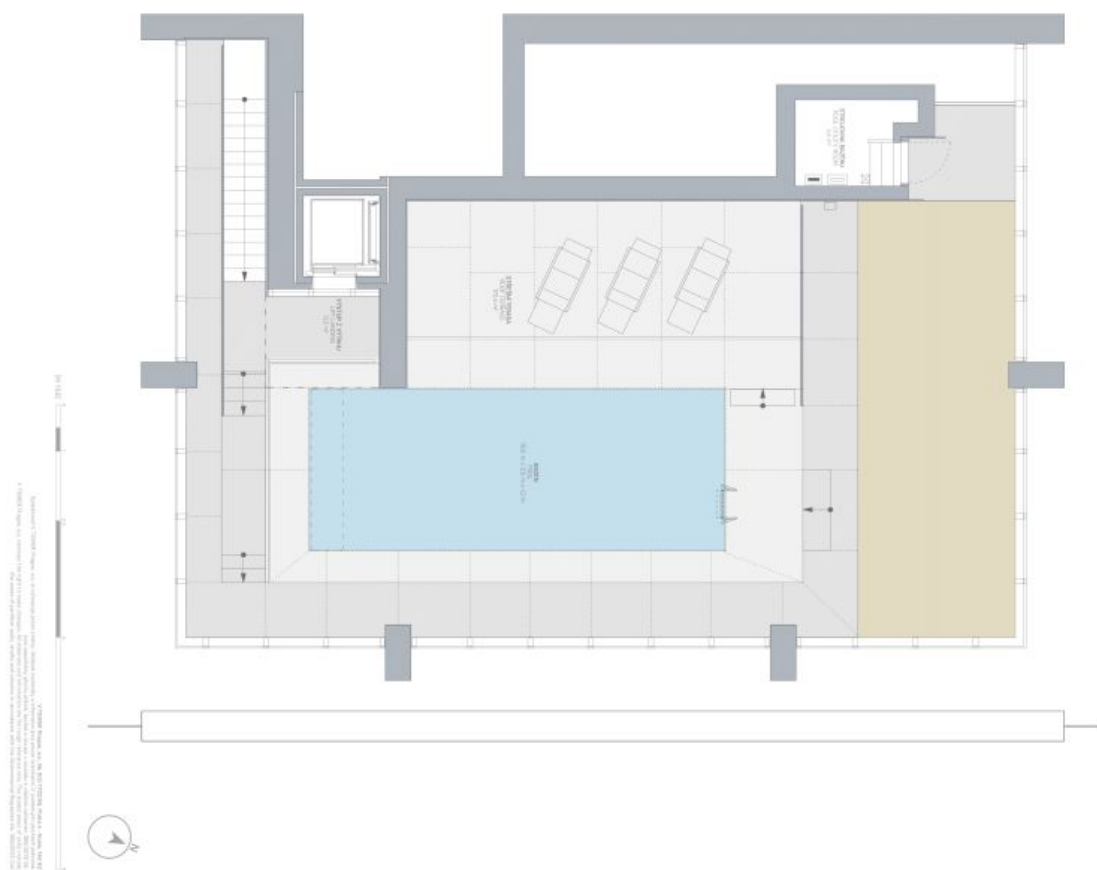


CELKOVÁ PODLAHOVÁ PLOCHA BYTU 339,4 m²
TOTAL APARTMENT AREA
257,7 m² CELKOVÁ PLOCHA TERAS
TOTAL TERRACE AREA

BAZÉN POOL

STŘEŠNÍ TERASA
ROOF TERRACE

ZP2
5+1





Apartment Four-bedroom (5+1)

339 m², Prague 4, Krč, Milevská

Ask for price

TOWER PRAGUE
VITELSKÉ NÁMĚSTÍ

ZP2
5+1

1. PODZEMNÍ PODLAŽÍ
1ST UNDERGROUND FLOOR

1 GARÁŽ / GARAGE
1 SKLEP / CELLAR

GARÁŽOVÁ STANÍČ. / PARKING NO.
123, 124, 129, 130
69,9 m²

PARKOVACÍ STANÍČ. / PARKING NO.
189
13,3 m²

SKLEP IS25 / CELLAR IS25
4,0 m²



Architectural drawing of the 1st underground floor. The drawing is a technical representation of the building's structure and layout. It includes a scale bar and a north arrow. The drawing is a technical drawing and should not be used for any other purpose without the consent of the architect.

