



House Five-bedroom (6+kk)

Sold

228 m², Praha 6, Dejvice, Ke Kulišce





House Five-bedroom (6+kk)

Sold228 m², Praha 6, Dejvice, Ke Kulišce

Plot	165 m ²
Parking	Double garage with a direct access to the apartment
Garage	Yes
Cellar	-
PENB	G
Reference number	31851

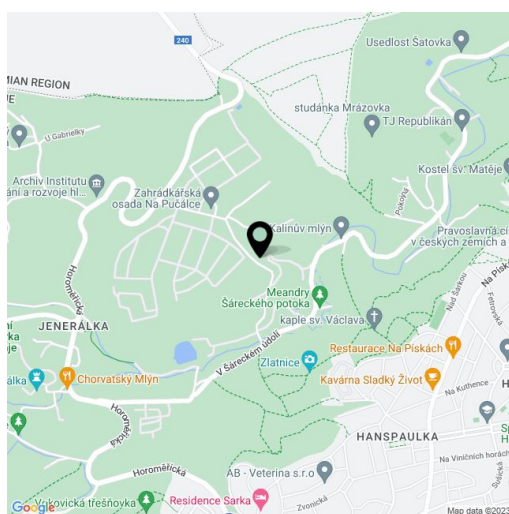
This property (housing unit) with a garden and a double garage offers the possibility of multi-generation housing on 3 floors. Located in an enclosed residential complex set in the beautiful landscape of the Šárka Valley, the place provides peace, privacy, and quick access to the metro, airport, or international schools.

The layout of the entrance floor consists of a living room with a kitchen, a dining area, and access to a **southeast-facing covered terrace**, a bathroom, and a foyer with a main entrance from the garden. Upstairs, there are 3 bedrooms and a bathroom, in the basement, on the same level as the lower garden, there is a separate unit with a large room currently used as a **fitness room**, a study with access to a private garden, a guest bedroom, a bathroom, and a closet.

The facilities include **wooden floors** and a **wooden Euro-windows** with interior blinds, a **fireplace** and radiators made of milk glass in the living room, and a fully equipped kitchen with built-in Gorenje appliances in white (induction hob). Parking is in a **double-garage** with a direct entrance to the basement. Heating is electric.

The property is part of the enclosed **Dubový mlýn** complex with a 24-hour reception, 12 separate villas, 4 villa residences, a pond, and a restored mill. There are wonderful views of the surrounding forests or of **St. Mathew's Church**. Another advantage is its excellent accessibility to both the airport and **international schools** (Global Preschool, ISP in Nebužice, Riverside School in Sedlec). Within walking distance, there is a bus stop with links to the **Dejvicka** metro station (line A), the ride takes 14 minutes. There are hiking paths and comfortable bike trails that lead to many popular tourist destinations.

Interior 228.48 m², terrace 149.27 and 15.63 m².

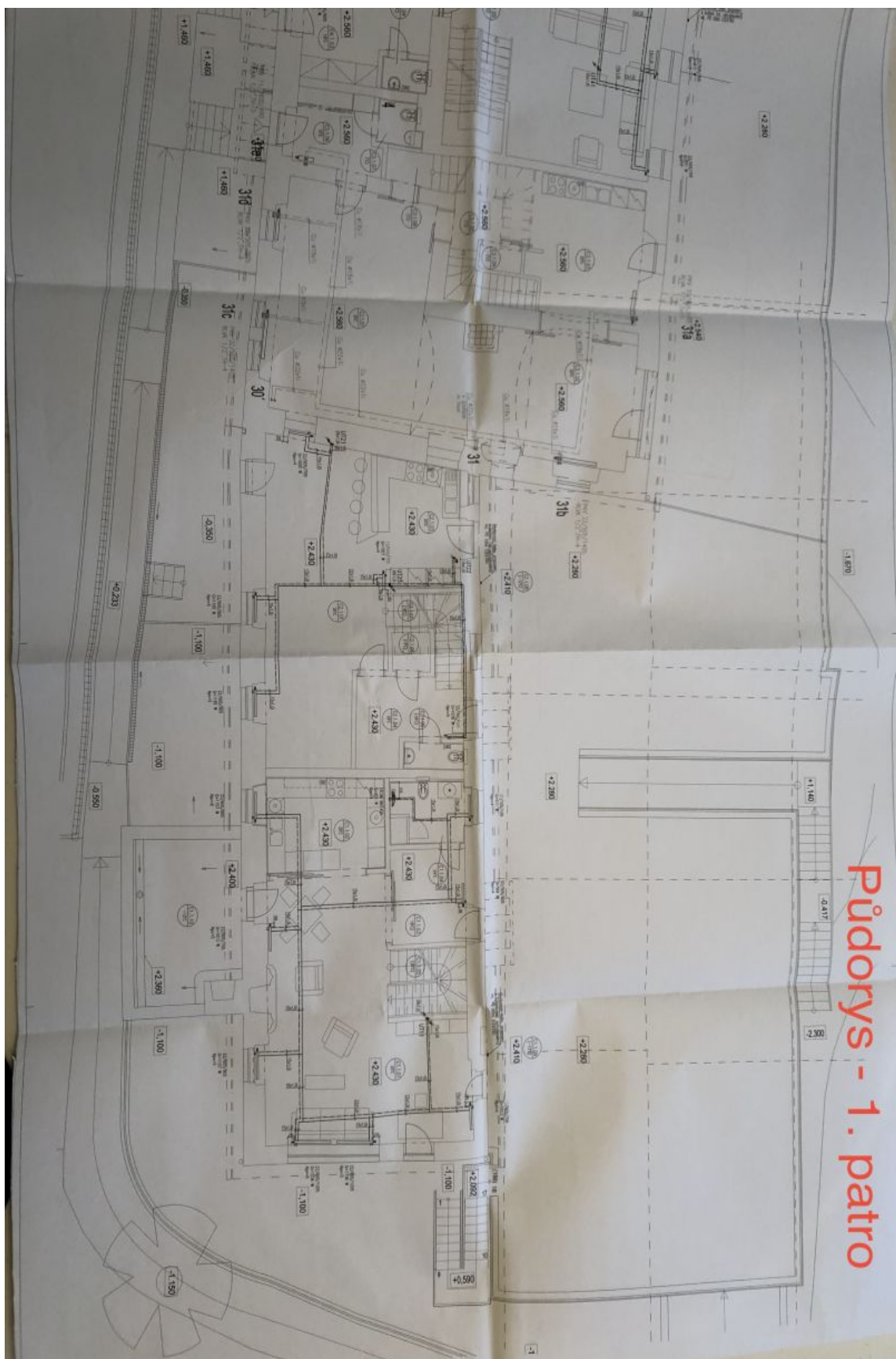




House Five-bedroom (6+kk)

228 m², Praha 6, Dejvice, Ke Kulišce

Sold

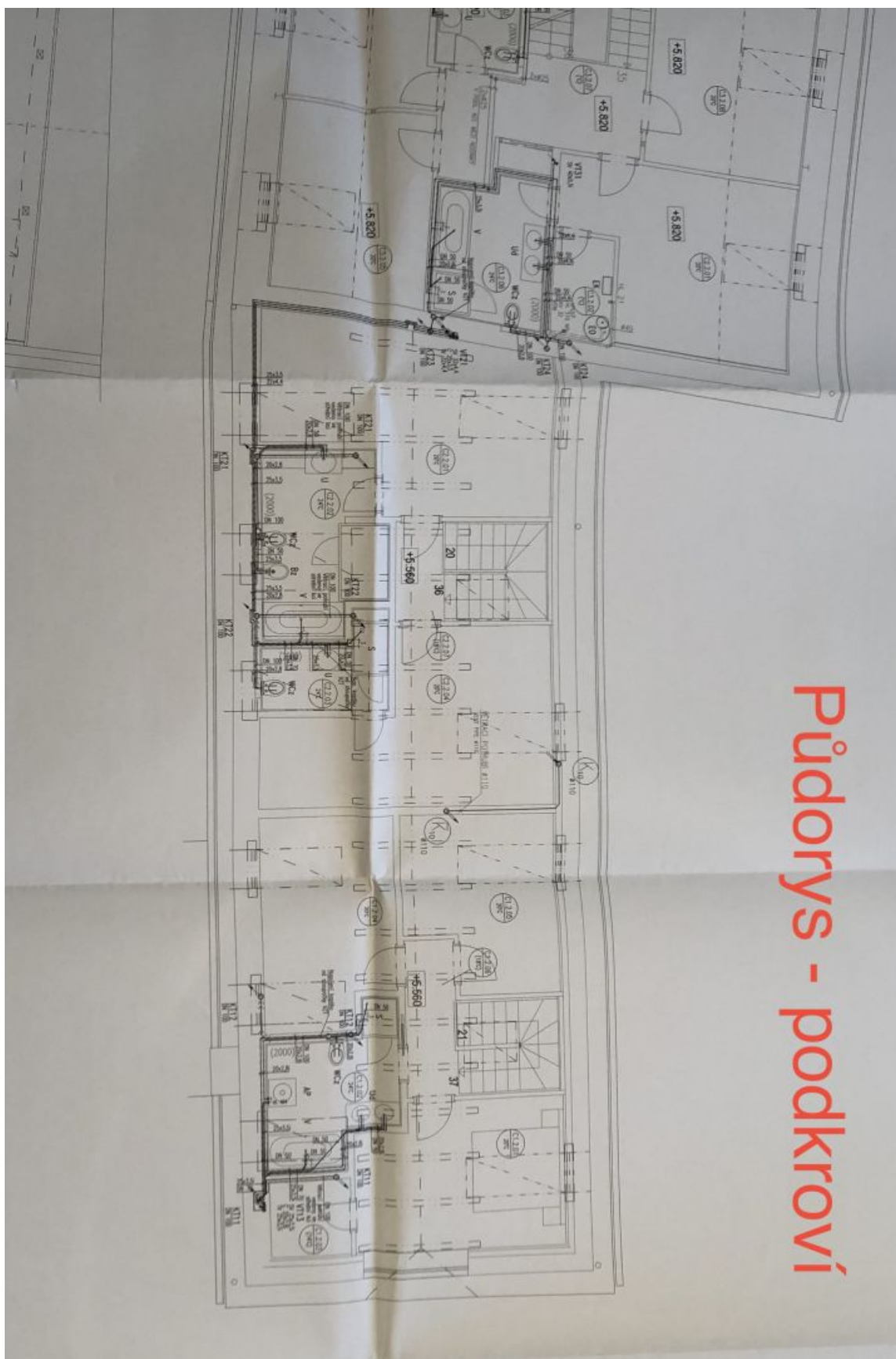




House Five-bedroom (6+kk)

228 m², Praha 6, Dejvice, Ke Kulišce

Sold



Půdorys - podkroví



House Five-bedroom (6+kk)

228 m², Praha 6, Dejvice, Ke Kulišce

Sold

