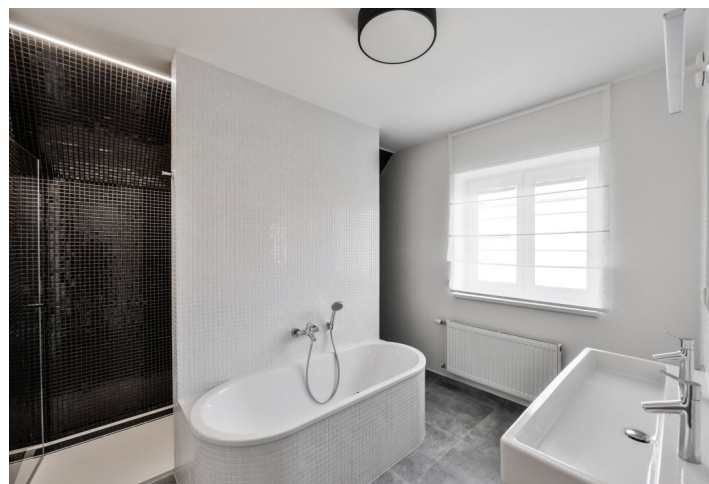




## House Four-bedroom (5+1)

Rented

250 m², Prague 6, Nebušice, Dešťová





## House Four-bedroom (5+1)

**Rented**

250 m², Prague 6, Nebušice, Dešťová

Plot	771 m²
Foot print	194 m²
Garden	577 m²
Parking	Garage and parking in front of the garage.
Garage	Yes
Cellar	-
PENB	D
Reference number	31987
Available from	Immediately

This is a completely newly refurbished 3-4-bedroom 2-bathroom free standing house with a garden and parking. The high standard home is set on the edge of the Malá Šárka subdivision built around the International School of Prague, and surrounded by lots of greenery, within easy reach of the Divoká Šárka nature preserve. Quiet location popular with the Prague expat community, convenient to the airport, a few min. drive to A line metro - stations Bořislavka and Dejvická with complete amenities in the area.

The ground floor features a living room with French windows and access to a paved patio, a fully fitted eat-in kitchen with a bay window, a **walk-in closet**, a toilet, a laundry / boiler room with direct garden access, a storage room, and an entrance hall with garage access. The upper floor includes a **huge hall / gallery** that can easily be converted into a **fourth walk-through bedroom**, plus a terrace, three bedrooms, an en-suite shower room with a toilet, a family bathroom including a bathtub, a walk-in shower and a toilet, and a storage room.

**High quality hardwood floors**, large format tiles, wooden stairs, built-in wardrobes, blinds, insect nets, gas boiler, dishwasher, induction cooktop, microwave oven, alarm, automatic garage door. **Garage and parking in front of the garage** is available. Service charges and utilities are billed separately. Very pleasant setting, ideal for families.

