



Office space

Bratislava II, Ružinov, Pribinova

€ 14.25 - 18.50 / m² | CZK 358 - 465 / m²





Office space

Bratislava II, Ružinov, Pribinova

€ 14.25 - 18.50 / m² | CZK 358 - 465 / m²

Service price	7 EUR monthly per m ²
Available area	669 m ²
Cellar	-
Parking	Yes
PENB	A
Reference number	32063

Top-quality modern office space for lease with direct access to a business center.

This multifunctional project located on the banks of the Danube River offers approx. 24,500 m² of office space in three separate office buildings. Central 1 has a total area of 7,200 m², Central 2,800 m², and Central 3 14,500 m². The buildings are connected by a shopping center with around 180 shops, a café, bars, a restaurant, a fitness center, an entertainment complex, a theater, several movie theaters, and all major banking institutions. A five-star Sheraton Hotel is part of the development.

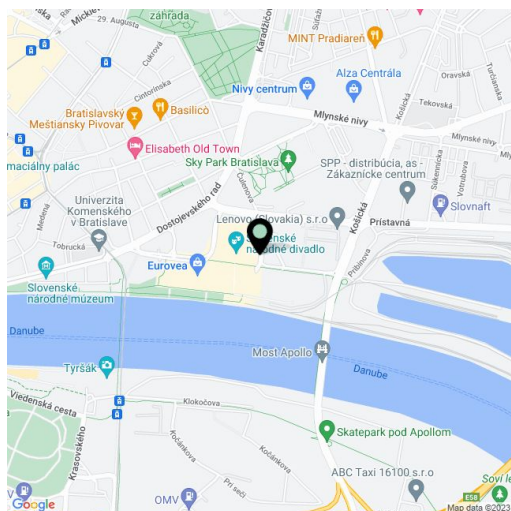
Location:

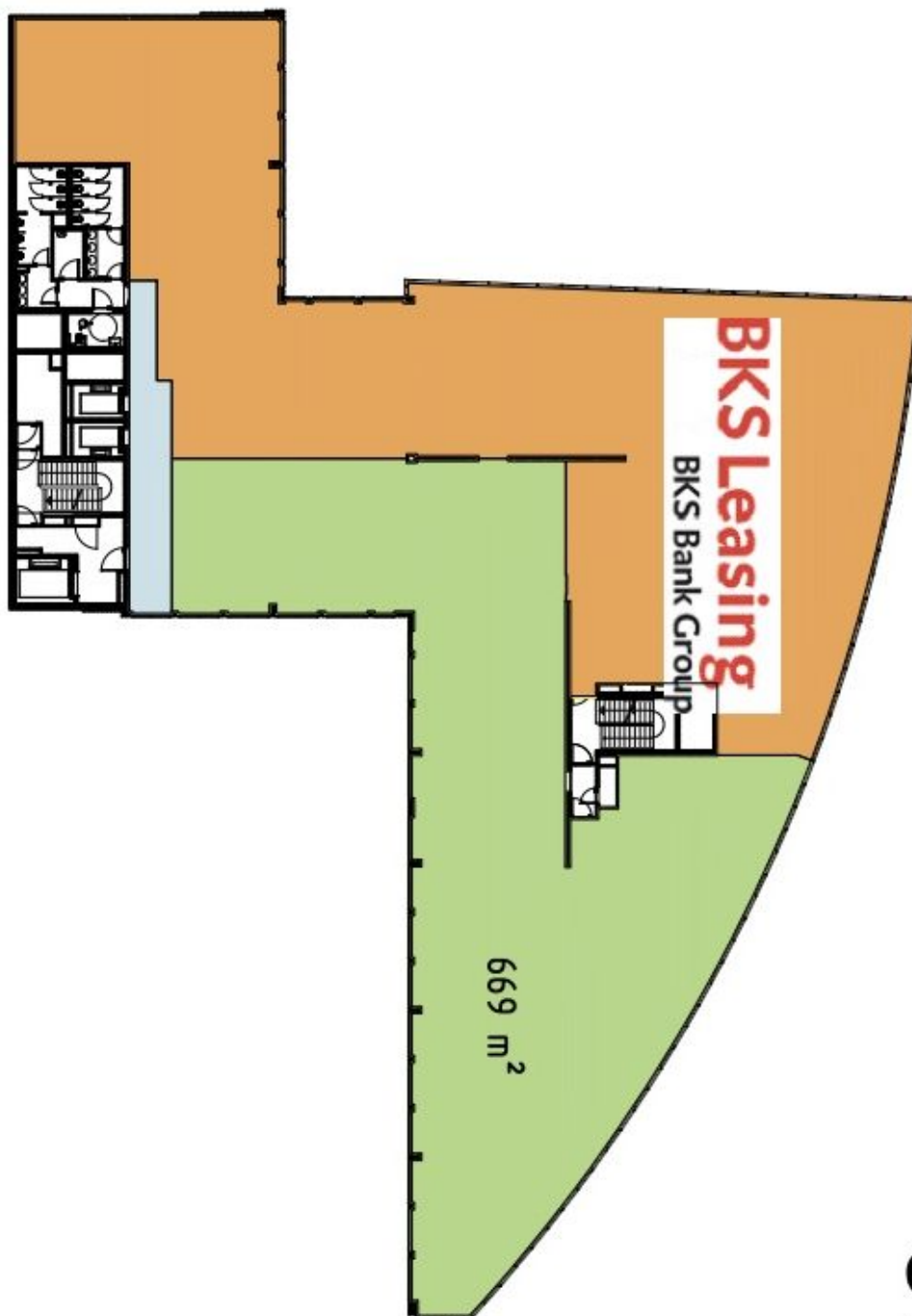
Situated in the heart of the city; the historic center is easily accessible for pedestrians. You can easily reach the building by public transport - by bus, tram, and trolleybus. By car, you can easily get to the inner city ring road, which connects to motorways to Brno, Vienna, or Budapest. Links to the city center, shopping area, offices, and a waterfront park increases the location's value.

Facilities & Services:

- high standards and layout flexibility
- double floor
- remote controlled heating and cooling
- full suspended ceilings with integrated lights
- interior blinds
- openable windows
- fire alarm (EPS)
- BMS building management system

Rent and fees are listed without VAT. Tenant pays no commission.





C1L5