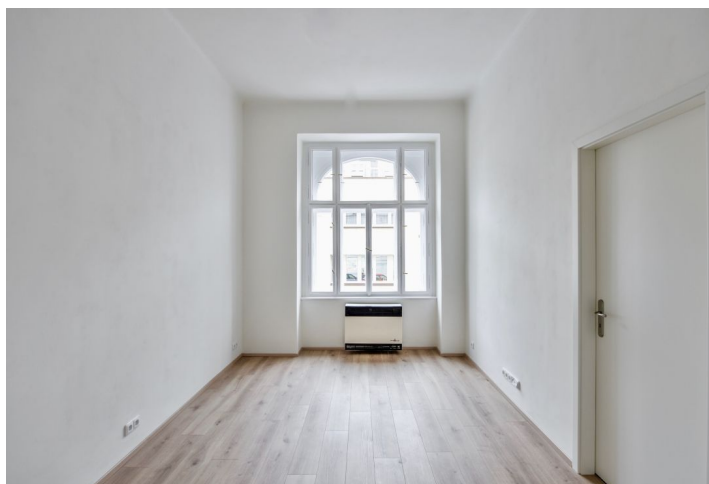




Apartment One-bedroom (2+kk)

Rented

35 m², Prague 7, Bubeneč, Na Výšinách





Apartment One-bedroom (2+kk)

Rented

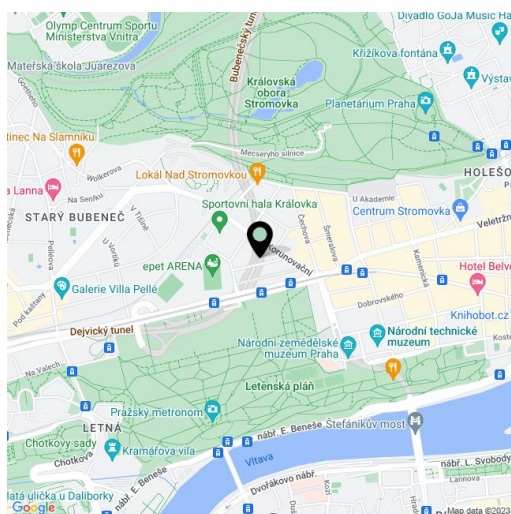
35 m², Prague 7, Bubeneč, Na Výšinách

Total area	35 m ²
Parking	-
Cellar	-
PENB	D
Reference number	32127
Available from	Immediately

This fully renovated 1-bedroom apartment is on the upper ground floor of a fully refurbished residential building with a lift. The building is set in a quiet street in a sought after Prague 7 neighborhood in close vicinity of the Sparta stadium, just a few minutes from the Letná and Stromovka Parks. Location with a fine selection of cafes, restaurants, trendy bistros, shopping and cultural venues, and very quick access to the city center, just one tram stop from Hradčanská metro station. Conveniently located for the airport and Prague 6 international schools.

The apartment features one bedroom with an en-suite shower room with a toilet, a living room with a fully fitted open plan kitchen and a dining area, and an entrance hall.

Preserved original details, high ceilings, large windows, storage under the ceiling, vinyl floors, tiles, gas heating, induction cooktop, dishwasher. Common building charges CZK 1.100/month. Gas and Electricity is paid separately.



* Area of the unit according to the Civil Code. The area consists of the sum total area of the entire unit bounded by perimeter walls.



Apartment One-bedroom (2+kk)

35 m², Prague 7, Bubeneč, Na Výšinách

Rented

